

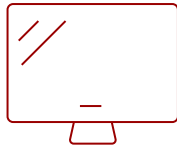
217" ALL-IN-ONE DIRECT VIEW LED DISPLAY | LDP217-121C

Key Features

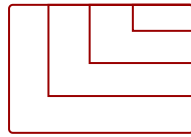
- **STUNNING 4K UHD RESOLUTION:** 4K clarity, vibrant colors, and sharp visuals in any lighting environment.
- **DURABLE COB TECHNOLOGY:** Tight pixel pitch, IP54 dust/moisture resistance, and IK08 impact protection.
- **ALL IN ONE INTEGRATION:** Built in power, control, and image systems for quick, simple installation.
- **FLEXIBLE CONTROL BAR PLACEMENT:** Detachable control bar can be mounted separately (up to 30 ft away) or hidden behind the dvLED with optional accessory kits.
- **EASY FRONT SERVICEABILITY:** Front serviceable LED modules allow for fast maintenance with included suction tool.



217"
DISPLAY



PANEL



3840x2160
RESOLUTION



Product Description

Part of the ViewSonic® LDP Performance Series, the ViewSonic® LDP217-121C all-in-one Direct View LED display delivers the same easy installation and accessibility found in our acclaimed LDM series, but takes visuals to the next level with breathtaking 4K Ultra HD resolution and advanced Chip-on-Board (COB) technology. Built to be a stunning centerpiece in any high-end lobby, boardroom, or auditorium, this 217" Direct View LED display delivers stunning, larger-than-life images. As a true all-in-one solution, the LDP217-121C includes the display, controller, and all components in a single part number, making specification, purchasing, and setup incredibly simple. With a high brightness of 600 nits, an incredible 10,000:1 contrast ratio, and powerful dual 30W speakers, this display provides vibrant, high-impact visuals and immersive sound for an exceptional viewing experience.

Specifications

UPC	766907033175
OS	Android 9.0
GPU	ARM Mali-T860MP4
CPU	RK3399
Memory	4GB DDR4
Storage	Total 32GB (26GB available storage)
Operating System	Android 9.0
CPU	RK3399
GPU	ARM Mali-T860MP4
Memory	4GB
Storage	Total 32GB (26GB available storage)
Internal Speakers	30W x 2
PC Resolution (max)	3840x2160
Mac® Resolution (max)	3840x2160
HDMI 2.0 (with HDCP 2.2)	4
HDMI 2.0 Out	1
3.5mm Audio Out	2
SPDIF	1
USB 3.0	1
USB 2.0	2
USB Type C	1
RS232	1
Ethernet LAN (RJ45)	2
IR in	1
Voltage	100-120V/30A~ 50/60Hz or 220-240V/15A~ 50Hz(vary by country)
Consumption (max)	3850W
Consumption (typical)	1283W
Stand-by	<0.5W
On Screen Display	Yes
Remote Control	Yes
Temperature	32-104° F (0 - 40° C)
Humidity (non-condensing)	20-80%
Net (lbs)	864
Gross (lbs)	1385
Net (kg)	392
Gross (kg)	628

Packaging (in.)	61.42x35.43x39.37*3, 77.95x18.5x18.5*1
Physical (in.)	189.45x112.09x1.61
Physical with Wall Mount (in.)	189.45x112.09x2.35
Packaging (mm)	1560x900x1000*3, 1980x470x470*1
Physical (mm)	4812x2847x41
Physical with Wall Mount (mm)	4812x2847x59.8
Warranty	3-year limited warranty on parts and labor, on-site service
Recycle/Disposal	Please dispose of in accordance with local, state or federal laws.
Package Contents	Power Cord, LAN Cable, IR Extender Cable, Remote Control, Installation Guide, Wall Mount, LD-MK-004, LD-MK-006
Regulations	cTUVus, FCC, RoHS
Display Type	Direct View LED
Screen Size	217"
Light Source	DLED
LED Pitch Size (mm)	1.25
LED Grayscale	13 bits
Refresh Rate	3,840Hz
Static Contrast Ratio	10,000:1
Backlight Life (Hours)	100,000
Brightness	600-nit
Viewing Angles	170° horizontal, 170° vertical
Impact Protection Rating	IK08 (Front)

UPC: 766907033175



Contact Sales
ViewSonic.com
888.881.8781
email:
salesinfo@viewsonic.com