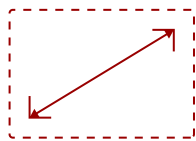


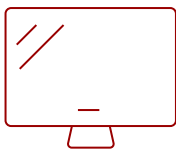
IFP4320

Key Features

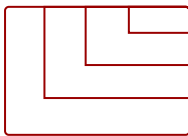
- Advanced Touch Capabilities and Screen Performance
- USB-C with Power Delivery
- Designed for Hybrid Environments
- myViewBoard Manager



43
DISPLAY



PANEL



RESOLUTION



Product Description

Featuring 4K Ultra HD resolution and an advanced, next-generation touchscreen, the ViewSonic® ViewBoard® IFP4320 is perfect for small collaboration spaces in hybrid work environments. With a 43" high-accuracy in-cell touchscreen, this ViewBoard display delivers a smooth handwriting and annotation experience ideal for home offices, workplace cubicles, huddle spaces and more. Integrated myViewBoard® annotation software and ViewBoard Cast streaming software, allow users to remotely collaborate with team members in any location. What's more, USB-C connectivity allows for quick and easy connection to laptops and PCs so that the IFP4320 can function as a primary touchscreen device.

Specifications

More Information

Display Type

LCD

Screen Size	43
Viewable Area (in.)	42.51
Light Source	LED
Resolution	3840 x 2160
Refresh Rate (Hz)	60
Aspect Ratio	16:9
Static Contrast Ratio	1,000:1
Backlight Life (Hours)	50,000
Brightness	350 cd/m2
Response Time (Typical GTG)	9ms
Viewing Angles	178º horizontal, 178º vertical
Panel Surface	Anti-glare
Ethernet LAN	10/100/1000 MB
Wifi	Optional VSB050 wireless adapter
OS	ViewBoard OS based on Android 8.0
GPU	MaliG51 MP2
CPU	ARM Quad Core A73+A53
Memory	3GB LPDDR4
Storage	16GB eMMC
Internal Speakers	10W (x2)
HDMI 2.0 In	1
DVI-D	1
DisplayPort	1
Composite RCA	1
USB 2.0 Type B	1
USB 3.1 Type C	1
Ethernet LAN (RJ45)	1
Voltage	100-240 VAC
Consumption (max)	150W
Consumption (typical)	120W
Stand-by	<0.5W
Temperature	32-104º F (0 - 40º C)
Humidity (non-condensing)	20-80%
Touch Technology	In-cell
Touch Points	10-Point Touch
Tip Detection	2.5mm

Other	Palm rejection, objection awareness
Net (lbs)	39.3
Gross (lbs)	49.49
Net (kg)	17.83
Gross (kg)	22.45
Packaging (in.)	47.2 x 30.9 x 8.3
Physical (in.)	38.1 x 21.9 x 2.2
Packaging (mm)	1200.0 x 785.0 x 210.0
Physical (mm)	967.0 x 558.1 x 55.7
VESA Compatible	400 x 400 mm
Screw Size	M6
Warranty	3-year limited warranty on parts, labor and backlight, onsite warranty
Recycle/Disposal	Please dispose of in accordance with local, state or federal laws.
PACKAGE CONTENTS	IFP4320 display, power cable, HDMI cable, USB-C, USB-A/B (for touch), AV cable, remote control with batteries, Camera plate, M8 screw x 8, legs, Quick Start Guide
Regulations	cTUVus, FCC, ENERGY STAR, EPEAT Certified, Mexico Energy, CE, CB, RoHS, ErP, WEEE



Contact Sales
[ViewSonic.com](https://www.viewsonic.com)
 888.881.8781
 email:
salesinfo@viewsonic.com