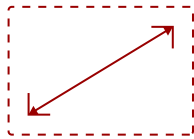
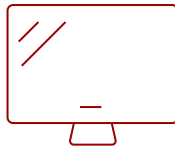


VG275 - 27" ERGONOMIC IPS MONITOR DESIGNED FOR SURFACE WITH 60W USB-C

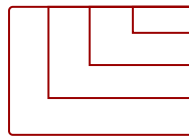
Key Features



27"
DISPLAY



IPS
PANEL



1920 x 1080
RESOLUTION



Product Description

Designed for Surface (DfS) products must meet the rigorous standards of Microsoft to ensure optimal compatibility with Microsoft Surface products.* The ViewSonic® VG275 monitor is compatible with all USB-C Surface devices and is ideal for office and home use. USB-C connectivity offers convenient charging power, video and audio over a single cable, and will charge your Surface device without the need for an additional power cable. Along with USB-C, additional connectivity options include HDMI, DisplayPort, VGA, and a USB hub. This 27" monitor also includes an advanced ergonomic design that features height adjustment, pivot, swivel and tilt for maximum comfort and enhanced productivity. This monitor is shipped in eco-friendly biodegradable packaging, along with an easy-to-install quick release stand that makes for simple out-of-the box setup. The quick release stand also includes an integrated client mount and cable management features. *Microsoft, Microsoft Surface, Designed for Surface are trademarks of the Microsoft group of companies.

Specifications

	More Information
UPC	766907025538
Screen Size	27"
Viewable Area (in.)	27
Panel Type	IPS
Display Resolution	1920 x 1080
Display Resolution	Full HD (1920x1080)
Static Contrast Ratio	1,000:1
Dynamic Contrast Ratio	50,000,000:1
Light Source	LED
Brightness	300 cd/m2
Colors	16.7M
Color Space Support	8 bit (6 bit + Hi-FRC)
Aspect Ratio	16:9
Response Time (Typical GTG)	5ms
Viewing Angles	178° horizontal, 178° vertical
Backlight Life (Hours)	30,000
Panel Surface	Anti-Glare type, Hard-coating (3H), Haze 25%
Refresh Rate	60Hz
PC Resolution (max)	1920 x 1080
Mac® Resolution (max)	1920 x 1080
USB Type A	3
USB Type B	1
USB Type C	60W x 1
VGA	1
HDMI 1.4 In	1
DisplayPort	1
Internal Speakers	2W (x2)
Eco Mode (Conserve)	14.5W
Eco Mode (optimized)	17.1W
Consumption (typical)	20.7W
Consumption (max)	45.8W
Voltage	AC 100-240V (universal), 50-60Hz
Stand-by	0.3W

Power Supply	Internal
Cable Organization	Yes
Kensington Lock Slot	1
Physical Controls	Key 1 (eye), Key 2, Key 3, Key 4, Key 5, Key 6 (power)
On Screen Display	Input Select, Audio Adjust, ViewMode, Color Adjust, Manual Image Adjust, Setup Menu
Temperature	32-104° F (0 - 40° C)
Humidity (non-condensing)	20-90%
VESA Compatible	100 x 100 mm
Frequency Horizontal	HDMI 1.4, DisplayPort, USB Type C: 15 ~ 82 KHz: VGA: 24 ~ 82 KHz
Frequency Vertical	HDMI 1.4, DisplayPort, USB Type C: 24 ~ 75 Hz: VGA: 50 ~ 75 Hz
Height Adjust	130 mm / 5.1 in
Swivel	60°
Pivot (Right/Left)	90° / 90°
Tilt (Forward/Back)	5° / 40°
Regulations	cTUVus, FCC-B, ICES003, Energy Star 8.0, EPEAT Gold, CEC, MX-CoC, Mexico Energy
Net (lbs)	16.1
Net Without Stand (lbs)	11.2
Gross (lbs)	23.1
Net (kg)	7.3
Net Without Stand (kg)	5.1
Gross (kg)	10.5
Packaging (in.)	27.2 x 16.9 x 8.6
Physical (in.)	24.1 x 15.99~20.99 x 8.0
Physical Without Stand (in.)	24.1 x 14.2 x 2.0
Packaging (mm)	692.0 x 430.0 x 218.0
Physical (mm)	612.0 x 406.19~533.24 x 202.0
Physical Without Stand (mm)	612.0 x 362.0 x 52.0
Package Contents	VG275, Power Cable, HDMI to HDMI Cable, USB Type C cable, USB Type A/B Cable, Quick Start Guide
Recycle/Disposal	Please dispose of in accordance with local, state or federal laws.
Warranty	*Refurbished. 30-day DOA policy for full refund, with a 90-day repair warranty on parts and labor.

UPC: 766907025538



Contact Sales

ViewSonic.com

888.881.8781

email:

salesinfo@viewsonic.com