

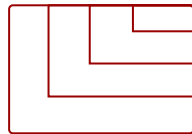
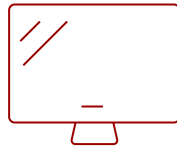
VIEWSONIC 4,000 LUMENS 1080P PROJECTOR WITH 0.65" DMD CHIP, HDMI AND USB A | PA503HD

Key Features

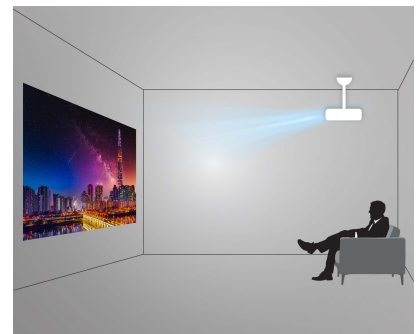
- High Brightness DLP Lamp FHD Projector: Full HD (1920x1080p) resolution with a 1.4-1.6 throw ratio and 4,000 ANSI lumens for clear, detailed images in any space
- Vibrant Colors & High Contrast: 22,000:1 dynamic contrast ratio and 0.65" DLP technology pair with SuperColor for deep blacks, rich color, and stunning image quality
- Designed for Fast Paced Content: A low 16ms input latency and 120Hz refresh rate provides faster frame-by-frame action for smooth images with minimal delay
- Large Screen Projection: Projects screen sizes from 80" to 150" with a throw distance of 8.7 ft - 16.3 ft; displays a 100" image from 10.8 ft
- Easy Setup & Image Adjustment: Features 1.1x optical zoom, 0.8x-2.0x digital zoom, V keystone, and auto keystone
- Installation Options: This projector is ceiling mountable; compatible with ViewSonic mount PJ-WMK-007



30 - 300 in. / 0.76 - 7.62 m **PANEL DISPLAY**



VGA(640 x 480) to WUXGA_RB(1920 x 1200) *RB-Reduced Blanking **RESOLUTION**



STANDARD THROW PROJECTOR
Ceiling or table-mounted, positioned further from the screen

Product Description

Help your best ideas look bigger and shine brighter with the ViewSonic® PA503HD projector. This state-of-the-art projector delivers up to 4,000 ANSI lumens of stunning brightness, 1080p FHD resolution and enormous images up to 300". A .65" DMD chip enables this high-brightness projector to create multimedia images with stunning contrast for enhanced clarity. Experience versatile multimedia connectivity with dual HDMI ports as well as a USB-A output port to power wireless HDMI dongles. No matter how you set up your projector, flexible features such as auto keystone correction help ensure a picture-perfect image every single time. Plus, with a laptop and USB cable, users can enjoy hassle-free maintenance and software updates.

Specifications

UPC	766907024470
Light Source	DLP Lamp
Display Resolution	Full HD (1920x1080)
Display Resolution	1920 x 1080
Brightness (Lumens)	4,000 ANSI
Screen Size	30 - 300 in. / 0.76 - 7.62 m
Throw Distance	1m-10m (100"@3.28m)
Throw Ratio	1.48-1.62
Keystone	Vertical (+/- 40°)
Lens	1.1x optical zoom
Light Source (watt)	240
Light Source Life, Normal (hours)	4000
Light Source Life, Dynamic Eco-Mode (hours)	15000
Color Depth	1.07B Color (R/G/B 10bit)
Dynamic Contrast Ratio	22,000:1
Aspect Ratio	16:9
Frequency Horizontal	15K~102KHz
Frequency Vertical	23~120MHz
PC Resolution (max)	VGA(640 x 480) to WUXGA_RB(1920 x 1200) *RB-Reduced Blanking
Mac® Resolution (max)	480i, 480p, 576i, 576p, 720p, 1080i, 1080p
3.5mm Audio Out	1
3.5mm Audio In	1
Control (RS232)	1
HDMI 1.4 (with HDCP 1.4)	2
Internal Speakers	3W (x1)
Voltage	100-240V+/- 10%, 50/60Hz AC
Consumption (typical)	295W
Stand-by	<0.5W
Physical Controls	Keypad, Power key
On Screen Display	Display, Image, Power Management, Basic, Advanced, System, Information (See user guide for full OSD functionality)
Temperature	32-104° F (0 - 40° C)
Kensington Lock Slot	1
Net (lbs)	6.0
Gross (lbs)	8.4
Net (kg)	2.7

Gross (kg)	3.8
Packaging (in.)	15.8 x 9.2 x 6.6
Physical (in.)	12.2 x 13.3 x 4.5
Packaging (mm)	400.0 x 337.0 x 168.0
Physical (mm)	309.0 x 234.0 x 115.0
Regulations	FCC (including ICES003), cTUVus, NOM, TUV-Rheinland S Mark
Package Contents	PA503W projector, power cable, VGA cable, laser remote control with batteries, Quick Start Guide
Warranty	Three-year limited warranty on parts and labor, 1-year limited warranty on lamp, 1st year free Express Exchange® service. (One year Express Exchange Service requires product registration).
Recycle/Disposal	Please dispose of in accordance with local, state or federal laws.

UPC: 766907024470



**4,000 LUMENS
AND 1080P RESOLUTION**

Contact Sales
ViewSonic.com

888.881.8781
email:
salesinfo@viewsonic.com