
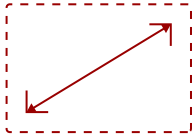


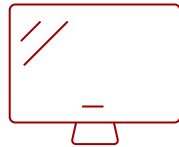
# VIEWSONIC 5,500 LUMENS 1080P LASER PROJECTOR WITH 1.3X OPTICAL ZOOM, H/V KEYSTONE, 4 CORNER ADJUSTMENT, 360 DEGREE PROJECTION | LS740HD

## Key Features

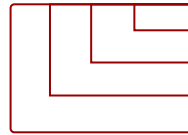
- High Brightness FHD Laser Projector: Full HD (1920x1080p) resolution with a 1.1-1.5 throw ratio and 5,500 ANSI lumens for clear, detailed images in any space
- Golf Mode for Realistic Simulation: Designed for immersive play, Golf Mode supports major golf simulators for lifelike play on world-class virtual courses
- Large Screen Projection: Projects screen sizes from 80" to 150" with a throw distance of 6.6 ft - 12.3 ft; displays a 100" image from 8.2 ft 
- Easy Setup & Image Adjustment: Features 1.3x optical zoom, 0.8x-2.0x digital zoom, H/V keystone, 360-degree projection, portrait mode, and 4-corner adjustment
- Instant Power On/Off: Enables quick startup and shutdown with optional settings for automatic power control
- Installation Options: This projector is ceiling mountable; compatible with ViewSonic mount PJ-WMK-007



30 - 300 in. / 0.76 - 7.62 m  
**DISPLAY**



**PANEL**



VGA(640 x 480) to WUXGA RB(1920 x 1200)  
**RESOLUTION**



## Product Description

With the ViewSonic® LS740HD laser projector, you can light up every room with brilliant presentations and razor-sharp resolution. Featuring the latest laser phosphor technology, the LS740HD projector delivers 5,500 ANSI lumens of brightness to ensure crisp images even in rooms with ambient lighting. Enjoy a maintenance-free projection experience without having to deal with complicated lamp replacements. This eco-friendly projection solution features a compact design for easier transportation. Experience screen sizes up to 300" in 1080p Full HD resolution for show-stopping images designed to fill up boardrooms, lecture halls, auditoriums and other public spaces. The LS740HD laser projector comes loaded with features like 1.3x optical zoom, H/V keystone, 4 corner adjustment, 360° projection and portrait mode for easy setup and versatile applications.

## Specifications

	More Information
<b>UPC</b>	766907022605
<b>Light Source</b>	Laser
<b>Display Resolution</b>	Full HD (1920x1080)
<b>Display Resolution</b>	1920 x 1080
<b>Brightness (Lumens)</b>	5,500 ANSI
<b>Screen Size</b>	30 - 300 in. / 0.76 - 7.62 m

<b>Throw Distance</b>	1-8m (100"@2.50m)
<b>Throw Ratio</b>	1.13~1.47
<b>Keystone</b>	Vertical (+/- 19°) / Horizontal (+/- 19°)
<b>Lens</b>	1.3x optical zoom
<b>Light Source Life, Normal (hours)</b>	20000
<b>Light Source Life, Dynamic Eco-Mode (hours)</b>	30000
<b>Color Depth</b>	1.07 Billion Colors
<b>Dynamic Contrast Ratio</b>	3,000,000:1
<b>Aspect Ratio</b>	16:9
<b>Input Lag</b>	37ms
<b>Frequency Horizontal</b>	15K-102KHz
<b>Frequency Vertical</b>	24-120Hz
<b>PC Resolution (max)</b>	VGA(640 x 480) to WUXGA RB(1920 x 1200)
<b>Mac® Resolution (max)</b>	480i, 480p, 576i, 576p, 720p, 1080i, 1080p
<b>USB 2.0 Type A</b>	1
<b>3.5mm Audio Out</b>	1
<b>Control (RS232)</b>	1
<b>HDMI 1.4 (with HDCP 1.4)</b>	2
<b>Internal Speakers</b>	15W (x1)
<b>Voltage</b>	100-240V+/- 10%, 50/60Hz AC
<b>Consumption (typical)</b>	210W
<b>Stand-by</b>	Standby: <0.5W
<b>Physical Controls</b>	Keypad, Power key
<b>On Screen Display</b>	Display, Image, Power Management, Basic, Advanced, System, Information (See user guide for full OSD functionality)
<b>Temperature</b>	32-104° F (0 - 40° C)
<b>Kensington Lock Slot</b>	1
<b>Net (lbs)</b>	6.6lbs
<b>Gross (lbs)</b>	10.4lbs
<b>Net (kg)</b>	3.00kg
<b>Gross (kg)</b>	4.70kg
<b>Packaging (in.)</b>	15.7x11x6.1in
<b>Physical (in.)</b>	11.3x8.5x5in
<b>Packaging (mm)</b>	400x280x155mm
<b>Physical (mm)</b>	286x216x129mm
<b>Regulations</b>	cTUVus

**Package Contents**

Projector, power cable, remote control, Quick Start Guide

**Warranty**

Three-year limited warranty on parts and labor, 1st year free Express Exchange® service. (One year Express Exchange Service requires product registration).

**Recycle/Disposal**

Please dispose of in accordance with local, state or federal laws.

UPC: 766907022605



**Contact Sales**

[ViewSonic.com](http://ViewSonic.com)

888.881.8781

email: [salesinfo@viewsonic.com](mailto:salesinfo@viewsonic.com)