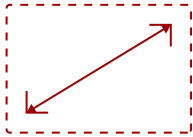


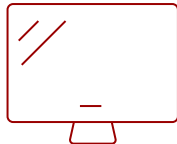
IFP7562 - 75" 4K TOUCH ENABLED VIEWBOARD SMART DISPLAY

Key Features

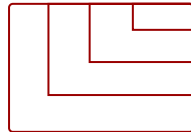
- **ULTRA HD RESOLUTION:** 75 Inch 4K Ultra HD (3840x2160p) with a bezel-less PCAP Touch Display
- **TOUCH PRECISION:** 20-point PCAP touch technology lets multiple users write on the screen with their fingers and active styluses
- **ONE CABLE SOLUTION:** Convenient USB-C for connected devices
- **BE HEARD:** Built-in Microphone Array with echo cancellation and noise reduction technology
- **POWERFUL COMPUTING:** Optional addition of Slot-in PC provides increased functionality and speed
- **REMOTE MANAGEMENT:** Schedule updates and monitor device status with the built-in myViewBoard® Manager software
- **PEACE OF MIND:** Industry-leading 3-year standard warranty with optional extensions and robust support services



75"
DISPLAY



PANEL



RESOLUTION



Product Description

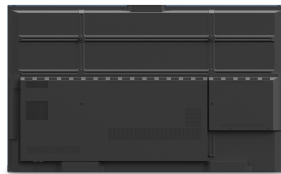
From executive boardrooms to interactive huddle spaces, the ViewSonic® ViewBoard® IFP7562 enables limitless collaboration and endless innovation. Designed to help teams connect, collaborate, and create, this next-generation digital whiteboard delivers exactly what you need to move your ideas forward. A premium, state-of-the-art design features a bezel-less PCAP (projected capacitive) touchscreen with incredible 4K Ultra HD resolution. This highly accurate interactive screen provides for an incredibly natural and responsive handwriting experience. Using fingers, styluses, or both, multiple users can simultaneously write or draw on the huge 75" ViewBoard panel. What's more, meetings and presentations start fast thanks to convenient one-wire USB-C connectivity.

Specifications

| | |
|----------------------------------|--------------------------|
| UPC | 766907012071 |
| OS | Android 8.0 |
| CPU | ARM Quad Core Cortex A73 |
| CPU Processor Speed | 1.2GHz |
| Memory | 3GB |
| Storage | 32GB |
| Internal Speakers | 12W (x2) |
| Subwoofer | 15W (x1) |
| HDMI 2.0 In | 4 |
| HDMI 4K Out | 1 |
| 3.5mm Audio Out | 1 |
| SPDIF Audio Out | 1 |
| USB 3.0 | 5 |
| USB 2.0 | 1 |
| USB 3.1 Type C | 1 |
| Slot-in PC Slot | 1 |
| USB B Touch Port | 2 |
| RS232 | 1 |
| Ethernet LAN (RJ45) | 2 |
| WIFI Module Slot | 1 |
| Voltage | 100-240 VAC |
| Consumption (max) | 490W |
| Consumption (typical) | 130W |
| Stand-by | <0.5W |
| Temperature | 32-104° F (0 - 40° C) |
| Humidity (non-condensing) | 10-90% |
| Touch Technology | Projective Capacitive |
| Touch Points | Windows: 20, Android: 20 |
| Tip Detection | Finger or Active Pen |
| Net (lbs) | 110.3 |
| Gross (lbs) | 146.2 |
| Net (kg) | 50.1 |
| Gross (kg) | 66.3 |
| Packaging (in.) | 72.8 x 44.1 x 10.6 |
| Physical (in.) | 67.4 x 40.6 x 3.1 |
| Packaging (mm) | 1848.0 x 1121.0 x 270.0 |

| | |
|------------------------------------|--|
| Physical (mm) | 1712.0 x 1031.0 x 78.0 |
| VESA Compatible | 800 x 400 mm |
| NFC | No |
| Warranty | 3-year limited warranty on parts, labor and backlight, onsite warranty |
| Recycle/Disposal | Please dispose of in accordance with local, state or federal laws. |
| Package Contents | IFP7562 display, power cable, HDMI cable, USB cable Type C, USB Cable for Touch, Passive Stylus x 2, RS232 Adapter, Clamp x 5, remote control with batteries, Camera plate, screw x 8, Quick Start Guide |
| Regulations | CTUVus, FCC, Energy 8.0, EPEAT, Mexico, CE, CB, ErP, REACH, UKCA |
| Ethernet LAN | (10/100/1000M) (USB Type-C & Android 10/100, PC 10/100/1000) |
| Display Type | LCD |
| Screen Size | 75" |
| Viewable Area (in.) | 74.5 |
| Light Source | LED |
| Display Resolution | 3840 x 2160 |
| Aspect Ratio | 16:9 |
| Static Contrast Ratio | 5,000:1 |
| Backlight Life (Hours) | 50,000 |
| Brightness | 350 cd/m2 |
| Response Time (Typical GTG) | 8ms |
| Viewing Angles | 178° horizontal, 178° vertical |
| Panel Surface | Anti-glare 9H tempered glass |

UPC: 766907012071



Contact Sales

ViewSonic.com

888.881.8781

email:

salesinfo@viewsonic.com