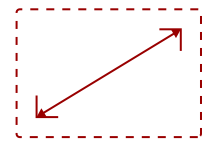


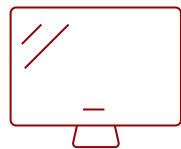
VIEWSONIC 3,000 LUMENS WXGA SHORTER THROW LED PROJECTOR WITH 125% REC. 709 | LS500WH

Key Features

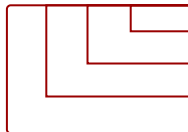
- Bright 3000 LED Lumens WUXGA projector with advanced visual features
- Latest LED technology provides an extended lifespan of up to 30,000 hours
- 1.1 optical zoom, and a vertical keystone and 360 degree projection
- This projector can be configured to automatically turn on and off
- Supports most media players, PCs, Macs, and mobile devices with inputs such as HDMI, and USB



30 - 300 in. / 0.76 - 7.62 m
DISPLAY



PANEL



1920x1080
RESOLUTION

Lamp-free LED projector



Product Description

Featuring 1280x800 WXGA resolution and 3,000 LED lumens of brightness, the ViewSonic® LS500WH is a lamp-free LED projector ideal for business and education. No matter the environment, expect stunning images and vivid colors, as this projector boasts 125% Rec. 709 color accuracy. With 2nd generation LED technology, the LS500WH eliminates the need to continuously swap out bulbs and dispose of toxic chemicals. In addition, an IP5X sealed optical engine prevents dust and moisture from entering the projector, ensuring impeccable image quality and a long maintenance-free lifespan of up to 30,000 hours.* An automatic on/off feature delivers efficiency and power savings, while 360° tilt angle projection delivers flexible setup in small- to medium-sized meeting rooms and classrooms. Whether for business or education, the ViewSonic LS500WH LED projector provides a picture-perfect presentation every time. *Lightsource lifespan may vary based on actual usage and other factors.

Specifications

	More Information
UPC	766907016734
Light Source	LED
Display Resolution	WXGA (1280x800)
Display Resolution	1280 x 800
Brightness (Lumens)	3,000 LED (2,000 ANSI)
Screen Size	30 - 300 in. / 0.76 - 7.62 m
Throw Distance	1m-10.98m (100"@"3.34m)
Throw Ratio	1.55-1.70
Keystone	Vertical (+/- 40°)
Lens	1.1x optical zoom
Light Source (watt)	RGB LED
Light Source Life, Normal (hours)	30000
Color Depth	1.07 Billion Colors
Dynamic Contrast Ratio	3,000,000:1
Aspect Ratio	16:10
Input Lag	37ms
Frequency Horizontal	15K~102KHz
Frequency Vertical	23-120Hz
PC Resolution (max)	1920x1080
PC Resolution (min)	640 x 480
Mac® Resolution (max)	1920 x 1080
Mac® Resolution (min)	640 x 480
USB 2.0 Type A	1
3.5mm Audio Out	1
3.5mm Audio In	1
Control (RS232)	1
HDMI 1.4 (with HDCP 1.4)	1
RCA Audio In (L/R)	1
Internal Speakers	2W (x1)
Voltage	100-120V+/- 10%, 50/60Hz
Consumption (typical)	156W
Stand-by	<0.5W
Physical Controls	Keypad, Power key

On Screen Display	Display, Image, Power Management, Basic, Advanced, System, Information (See user guide for full OSD functionality)
Temperature	32-104° F (0 - 40° C)
Kensington Lock Slot	1
Net (lbs)	5.4
Gross (lbs)	7.8
Net (kg)	2.5
Gross (kg)	3.6
Packaging (in.)	14.4 x 11.8 x 7.4
Physical (in.)	11.5 x 8.7 x 4.5
Packaging (mm)	365.0 x 300.0 x 188.0
Physical (mm)	293.0 x 221.0 x 115.0
Regulations	cTUVus
Package Contents	LS500WH projector, power cable, remote control, Quick Start Guide,
Warranty	Three-year limited warranty on parts and labor, 1-year limited warranty on the light source, 1st year free Express Exchange® service. (One year Express Exchange Service requires product registration).
Recycle/Disposal	Please dispose of in accordance with local, state or federal laws.

UPC: 766907016734



**3,000 LED LUMENS
AND WXGA RESOLUTION**



**BIG SCREEN PROJECTION
FOR SCHOOLS AND BUSINESSES**



GO BIG EVEN IN SMALL SPACES

Contact Sales
ViewSonic.com

888.881.8781
email:
salesinfo@viewsonic.com