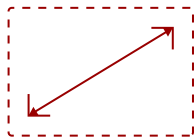


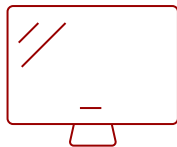
IFP6552-1C - 65" 4K TOUCH ENABLED VIEWBOARD SMART DISPLAY

Key Features

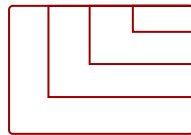
- **ULTRA HD RESOLUTION:** 43 Inch 4K Ultra HD (3840x2160p) Display
- **ADVANCED TOUCH:** 33-point Multi-touch lets users write or draw on the panel with their fingers and styluses
- **MEANINGFUL COLLABORATION:** Incredible capabilities for conference rooms, classrooms, and hybrid environments
- **FLEXIBLE CONNECTIVITY:** Powerful quad-core processor and versatile connectivity options (HDMI,VGA, RJ45, and USB-C ports)
- **INTEGRATED SOFTWARE:** The myViewBoard suite includes Whiteboard, ViewBoard Cast, and more for better engagement
- **REMOTE MANAGEMENT:** Schedule updates and monitor device status with the built-in myViewBoard® Manager software
- **PEACE OF MIND:** Industry-leading 3-year standard warranty with optional extensions and robust support services
- Upgradable to Android 11



65"
DISPLAY



PANEL



RESOLUTION



Product Description

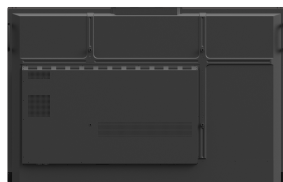
The ViewSonic® ViewBoard® IFP6552-1C is a 65" interactive flat panel display with next-generation whiteboard technologies for immersive learning in any classroom environment. With a high-accuracy touchscreen and intelligent palm recognition technology, the IFP6552-1C delivers an intuitive digital whiteboard experience for everyone from the youngest of students to the most experienced teachers. Featuring 4K Ultra HD resolution, a powerful 45W stereo soundbar with a built-in subwoofer, and microphone array, this ViewBoard display delivers optimal images and sound for everyone in the classroom as well those learning remotely. With the integrated myViewBoard™ software ecosystem, this ViewBoard display enables teachers to access legacy files from the cloud, as well as build new interactive lessons. IT directors will be confident managing files from a secure cloud network, while curriculum directors will be pleased knowing that this software easily integrates with online resources.

Specifications

UPC	766907013887
OS	ViewBoard OS based on Android 9.0 (Upgradable to Android 11)
GPU	ARM Mali-G52
CPU	ARM Quad Core A73
CPU Processor Speed	1.8GHz
Memory	4GB LPDDR4
Storage	32GB eMMC
Microphone	Beamforming array x 8, noise cancelation
Internal Speakers	15W (x2)
Subwoofer	15W (x1)
HDMI 2.0 In	4
HDMI Out	1
VGA	1
DisplayPort	1
SPDIF	1
USB 2.0	5
USB 2.0 Type B	2
USB 3.1 Type C	1
OPS PC Slot	1
RS232	1
Ethernet LAN (RJ45)	2
Line In	1
Voltage	100-240 VAC
Consumption (typical)	233.5W
Stand-by	<0.5W
Temperature	32-104° F (0 - 40° C)
Humidity (non-condensing)	10-90%
Touch Technology	Infrared
Touch Points	Windows: 33, Android: 20
Tip Detection	Dual tips, 2mm and 9mm
Other	Palm recognition, object awareness
Net (lbs)	93.4
Gross (lbs)	114.9
Net (kg)	42.4
Gross (kg)	52.7
Packaging (in.)	63.7 x 41 x 8.7

Physical (in.)	58.6 x 37.3 x 4.7
Packaging (mm)	1620.0 x 1043.0 x 220.0
Physical (mm)	1488.0 x 948.0 x 120.0
VESA Compatible	600 x 400 mm
Screw Size	M8
NFC	No
Warranty	3-year limited warranty on parts, labor and backlight, onsite warranty
Recycle/Disposal	Please dispose of in accordance with local, state or federal laws.
Package Contents	IFP6552-1C display, stylus pen x 2, eraser, power cable, HDMI cable, USB cable, AV cable, remote control with batteries, Camera plate, M8 screw x 8, Quick Start Guide
Regulations	cTUVus, FCC, ENERGY STAR, EPEAT Silver, Mexico Energy, CE, CB, RoHS, ErP, WEEE
Ethernet LAN	(10/100/1000M) (USB Type-C 10/100, Android & PC 10/100/1000)
Wifi	Optional VB-WIFI-001 adapter, 802.11AX + Bluetooth 5.2
Display Type	LCD
Screen Size	65"
Viewable Area (in.)	64.5
Light Source	LED
Display Resolution	3840 x 2160
Refresh Rate	60Hz
Aspect Ratio	16:9
Static Contrast Ratio	1,200:1
Dynamic Contrast Ratio	4,000:1
Backlight Life (Hours)	50,000
Brightness	400 nits (without cover glass)
Response Time (Typical GTG)	8ms
Viewing Angles	178° horizontal, 178° vertical
Panel Surface	Anti-glare 7H tempered glass 3.2mm

UPC: 766907013887



Contact Sales
ViewSonic.com

888.881.8781
 email:
salesinfo@viewsonic.com