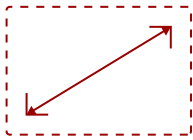


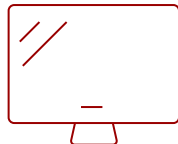
IFP2410 - 24" TOUCH ENABLED VIEWBOARD SMART DISPLAY

Key Features

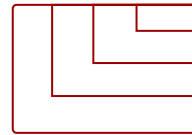
- FULL HD RESOLUTION: 24 Inch Full HD (1920x1080p) interactive display
- ADVANCED TOUCH: Multiple users may write or draw on the screen with their fingers and stylus pens
- INTEGRATED SOFTWARE: The myViewBoard suite includes Whiteboard, ViewBoard Cast, and more for better engagement
- FLEXIBLE CONNECTIVITY: Powerful quad-core processor and versatile connectivity options (HDMI, RJ45, and USB ports)
- BUILT-IN OS: Based on Android 8.0 and is compatible with Windows and Android devices only
- REMOTE MANAGEMENT: Schedule updates and monitor device status with the built-in myViewBoard® Manager software
- PEACE OF MIND: Industry-leading 3-year standard warranty with optional extensions and robust support services



24
DISPLAY



IPS
PANEL



RESOLUTION



Product Description

The ViewSonic® IFP2410 ViewBoard® Mini is a 24" smart display that transforms podiums and lecterns into collaboration hubs for front-facing teaching. With integrated myViewBoard® digital whiteboarding software, ViewBoard Cast streaming software, and a 10-point touchscreen, the ViewBoard Mini makes content creation and sharing easier than ever before. Educators can manipulate and control content, files, images, and annotations on the ViewBoard Mini touchscreen, then share that content on a larger front-of-classroom display or projector. For dynamic lessons and interactive collaboration, multiple presenters can simultaneously draw, write, and annotate on the ViewBoard Mini as well – making it an ideal collaboration hub solution for classrooms, lecture halls, and auditoriums.

Specifications

	More Information
UPC	766907003864
OS	8.1
CPU	Rockchip® RK3288W Cortex-A17 Quad-Core
Memory	2GB DDR3
Storage	16GB eMMC
Built-in Software	myViewBoard, Chromium browser, Zoom, ViewBoard Cast
Microphone	Built In, Echo cancelling
Internal Speakers	2.5W (x2)

HDMI 1.4 In	1
HDMI 1.4 Out	1
3.5mm Audio Out	1
USB 2.0	4
USB 2.0 Type B	1
Ethernet LAN (RJ45)	1
Voltage	100-240 VAC
Consumption (max)	40W
Consumption (typical)	16W
Stand-by	<2W
Temperature	32-95° F (0 - 35° C)
Humidity (non-condensing)	20-90%
Touch Technology	Capacitive
Touch Points	Windows: 1, Android: 10
Net (lbs)	12.4
Gross (lbs)	16.7
Net (kg)	5.6
Gross (kg)	7.6
Packaging (in.)	25.3 x 17.1 x 4.9
Physical (in.)	22.6 x 13.9 x 1.9
Packaging (mm)	643.0 x 435.0 x 140.0
Physical (mm)	572.9 x 351.8 x 47.0
VESA Compatible	100 x 100 mm
Webcam	5MP
Microphone	Built In, Echo cancelling
Warranty	Three-year limited warranty on parts, labor and backlight
Recycle/Disposal	Please dispose of in accordance with local, state or federal laws.
Package Contents	IFP2410, power adapter and cord, Quick Start Guide
Regulations	cTUVus, FCC-B(including ICES003), FCC-ID, CA IC
Battery Chemistry	Lithium
Ethernet LAN	N/A
Wifi	802.11 b/g/n/ac (2.4GHz / 5GHz)
Bluetooth	Bluetooth 4.0
Screen Size	24
Viewable Area (in.)	23.6
Light Source	LED


Display Resolution	1920 x 1080
Panel Type	IPS
Aspect Ratio	16:9
Static Contrast Ratio	3,000:1
Brightness	250 cd/m2
Response Time (Typical GTG)	16ms
Viewing Angles	178° horizontal, 178° vertical
Panel Surface	3H Anti-glare, hard-coating

UPC: 766907003864



Contact Sales

ViewSonic.com

888.881.8781 

email: salesinfo@viewsonic.com 