

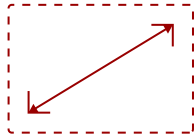
VSD243 - 24" DISPLAY, 250 CD/M2 BRIGHTNESS, INTEGRATED MEDIA PLAYER

## Key Features

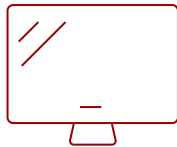
---

REFURBISHED

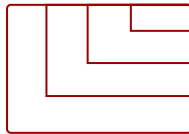
- Powerful Quad Core Processor
- Android 8.1 Oreo OS
- 10-Point Multi-Touch
- Equipped With Wi-Fi, Bluetooth and RJ45
- Versatile Connectivity
- Optional Kiosk Stand



24"  
DISPLAY



PANEL



RESOLUTION



## Product Description

---

The ViewSonic® VSD243 is a 24" (23.6" viewable) smart display with Full HD 1080p resolution, Quad-Core 1.8GHz processor, 10-point capacitive touch, and Android™ Oreo 8.1 OS. Versatile connectivity options include HDMI (In/Out), multiple USB ports, SD card reader, RJ45 Ethernet, Dual Band 2.4GHz/5GHz Wi-Fi, Bluetooth4.0, 5M pixel webcam with integrated microphone, and 2.5W speakers for video conferencing. With its sleek ID, thin bezel, fan-less design, 7H hardness screen coating, and VESA compatible mounting capabilities, the VSD243 is a flexible solution for information kiosks, public displays, or POS stations in business centers, libraries, or retail environments. The VSD243 can also be operated as a stand-alone PC replacement, or as a traditional 24" Full HD touch monitor via HDMI to your PC/Laptop. With a comprehensive set of enhanced features and functions, the VSD243 is perfect for a wide range of applications and commercial kiosk based solutions for business, restaurants, service counters, or retail environments.

## Specifications

---

More Information

Energy Star Compliant

No

<b>UPC</b>	766907001297
<b>CPU Processor Type</b>	Rockchip® RK3288W Cortex-A17 Quad-Core
<b>OS</b>	8.1
<b>Type</b>	IPS
<b>Static Contrast Ratio</b>	3,000:1
<b>Viewing Angles</b>	178° horizontal, 178° vertical
<b>Display Resolution</b>	1920 x 1080
<b>Viewable Area (in.)</b>	23.6
<b>Response Time (Typical GTG)</b>	16ms
<b>Light Source</b>	LED
<b>Brightness</b>	250 cd/m2
<b>Panel Surface</b>	Anti-glare, Hard coating (3H)
<b>Aspect Ratio</b>	16:9
<b>Display Resolution</b>	Full HD (1920x1080)
<b>Screen Size</b>	24"
<b>Voltage</b>	100-240 VAC
<b>Consumption (max)</b>	40W
<b>Consumption (typical)</b>	16W
<b>Stand-by</b>	<2W
<b>Off</b>	<0.5W
<b>Temperature</b>	32-95° F (0 - 35° C)
<b>Humidity (non-condensing)</b>	20-90%
<b>Touch Technology</b>	Capacitive
<b>Touch Points</b>	10-Point Touch
<b>HDMI 1.4 In</b>	1
<b>HDMI 1.4 Out</b>	1
<b>3.5mm Mic In</b>	1
<b>3.5mm Audio Out</b>	1
<b>Mini USB</b>	1
<b>Ethernet LAN (RJ45)</b>	1
<b>USB 2.0 Type A</b>	4
<b>USB 2.0 Type B</b>	1
<b>SD Card Slot</b>	1
<b>DC Jack (12V/4A)</b>	1
<b>RAM</b>	2GB
<b>Memory Type</b>	DDR3

<b>Storage Capacity</b>	16GB
<b>Storage Type</b>	eMMC
<b>Wifi</b>	802.11a/b/g/n/ac
<b>Bluetooth</b>	Bluetooth 4.0
<b>Webcam</b>	5MP
<b>Microphone</b>	Built In, Echo cancelling
<b>Internal Speakers</b>	2.5W (x2)
<b>Net (kg)</b>	5.6
<b>Gross (kg)</b>	7.6
<b>Net (lbs)</b>	12.4
<b>Gross (lbs)</b>	16.7
<b>Packaging (mm)</b>	643.0 x 435.0 x 140.0
<b>Physical (mm)</b>	572.9 x 351.8 x 47.0
<b>Packaging (in.)</b>	25.3 x 17.1 x 4.9
<b>Physical (in.)</b>	22.6 x 13.9 x 1.9
<b>VESA Compatible</b>	100 x 100 mm
<b>Screw Size</b>	M4
<b>Screw Length (mm)</b>	4
<b>Package Contents</b>	VSD243 smart display, power adapter and cord, Quick Start Guide
<b>Recycle/Disposal</b>	Please dispose of in accordance with local, state or federal laws.
<b>Regulations</b>	cTUVus, FCC-B(including ICES003), FCC-ID, CA IC
<b>Warranty</b>	Three-year limited warranty on parts, labor and backlight
<b>Battery Chemistry</b>	Lithium

UPC: 766907001297



### Contact Sales

[ViewSonic.com](http://ViewSonic.com)

888.881.8781

email:

[salesinfo@viewsonic.com](mailto:salesinfo@viewsonic.com)