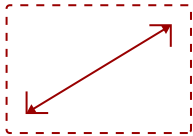
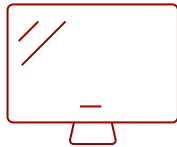


CDE105UW - 105-INCH ULTRA-WIDE DISPLAY, 21:9 ASPECT RATIO, 5120X2160 RESOLUTION, 500 CD/M2 HIGH BRIGHTNESS, 24/7 OPERATION, HDMI, DP, USB-C, RJ45, BUILT-IN CONTENT SHARING, REMOTE MANAGEMENT, AV CONTROL SYSTEM INTEROPERABILITY, LANDSCAPE AND PORTRAIT MODE

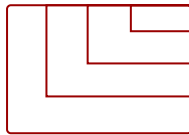
Key Features



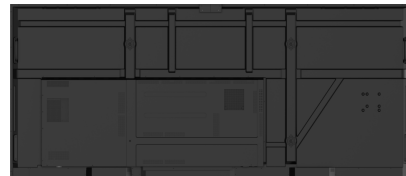
105"
DISPLAY



IPS-Type
PANEL



RESOLUTION



Product Description

The ViewSonic® CDE105UW is a 105" ultrawide 5K display that is optimized for Microsoft Teams Rooms and ideal for inclusive meetings and presentations. Featuring a 21:9 aspect ratio, this ultrawide display offers 33% more screen real estate than a traditional 16:9 aspect ratio - delivering more than enough space for collaboration and more inclusive meetings. With 24/7 reliability, 500-nit high brightness and a 25% high haze anti-glare screen, this versatile display can also function as an immersive digital signage solution. Versatile connectivity options include HDMI, DisplayPort and USB-C with 100W power delivery. Plus, an all-in-one design features an integrated octa-core SoC on Android 13 to ensure seamless operation without external devices.

Specifications

[More Information](#)

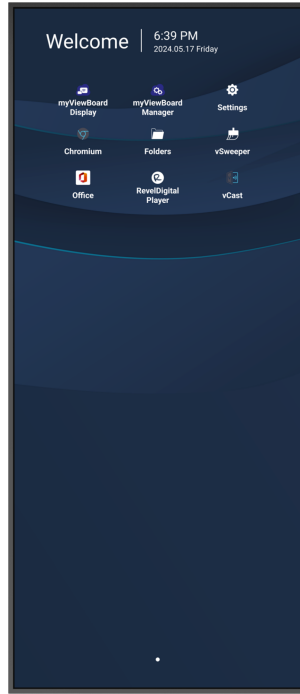
UPC

766907031409

OS	Android 13.0
Media Player Type	Media Player
GPU	MALI-G610
CPU	Rockchip RK3588 (A76 x 4, A55 x 4)
CPU Processor Speed	Quad-core, A76 (2.4GHz) + A55 (1.8GHz)
Memory	8GB DDR4
Storage	128GB
Internal Speakers	20W (x2)
Subwoofer	20W (x1)
HDMI 2.1 (HDCP 2.2) In	1
HDMI 2.0 (with HDCP 2.2)	3
HDMI 2.0 Out	1
3.5mm Audio In	1
3.5mm Audio Out	1
SPDIF	1
USB 3.0	4
USB 2.0	1
USB Type C	1
RS232	1
RJ45 Input (Internet)	1
WIFI Module Slot	1
Voltage	100-240 VAC +/- 10% Wide Range, 50-60Hz +/-3 Hz
Stand-by	<0.5W
Temperature	32-104° F (0 - 40° C)
Humidity (non-condensing)	20-80%
Net (lbs)	116.96
Gross (lbs)	163.14
Net (kg)	53.1
Gross (kg)	74.0
Packaging (in.)	105.04 x 48.54 x 11.02
Physical (in.)	98.03 x 42.57 x 3.03
Packaging (mm)	2668.0 x 1233.0 x 280.0
Physical (mm)	2489.9 x 1081.4 x 77.0
VESA Compatible	1000 x 600
Screw Size	M8
Screw Length (mm)	25

AV Control	AMX Certified, Extron Certified, Crestron Connected
Warranty	Three-year limited warranty on parts, labor and backlight
Recycle/Disposal	Please dispose of in accordance with local, state or federal laws.
Package Contents	CDE105UW, 3m power cable, USB Type C cable 1.8m(USB-IF certified), Remote control, AAA Battery x 2, Quick Start Guide, RS232 adapter, Clamp x 5, Camera Plate (VB-CAM-201, UMB202) Screw x 8 (camera 2+2, wall mount 4), HDMI cable 3m (HDMI LA certified)
Regulations	cTUsus, FCC, Energy Star 8.0, RoHS, Mexico NOM, Mexico Energy
Wifi	Wi-Fi 6 (802.11ax (a/b/g/n/ac/ax)) Optional (VB-WIFI-004)
Bluetooth	Bluetooth 5.0
Screen Size	105"
Viewable Area (in.)	105
Orientation	Landscape / Portrait
Colors	1.07B
Color Space Support	8 bit + FRC
Light Source	DLED
Display Resolution	5120 x 2160
Refresh Rate	60Hz
Panel Type	IPS-Type
Aspect Ratio	21:9
Static Contrast Ratio	5,000:1
Dynamic Contrast Ratio	5,000:1
Backlight Life (Hours)	50,000
Brightness	500 cd/m2
Response Time (Typical GTG)	<6.5ms
Bezel Width (in.)	0.71
Bezel Width (mm)	18
Viewing Angles	178° horizontal, 178° vertical
Panel Surface	Anti-Glare type, Hard-coating (3H), Haze 25%
Operation Rating	24/7

UPC: 766907031409



Contact Sales
[ViewSonic.com](https://www.viewsonic.com)

888.881.8781
email:
salesinfo@viewsonic.com