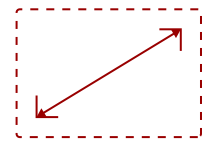


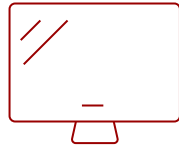
VIEWSONIC 22" 1080P ERGONOMIC 40-DEGREE TILT IPS MONITOR WITH HDMI, DP, AND VGA | VG2248

Key Features

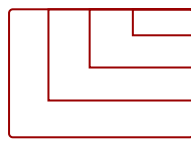
- Versatile Monitor: 22 Inch Full HD (1920x1080p) IPS monitor with 60Hz refresh rate
- Ergonomic Stand: Advanced ergonomics (40-degree tilt, swivel, rotate and height) for all-day comfort
- Enhanced Viewing Comfort: Flicker-Free technology and Blue Light Filter for reduced eye fatigue
- Versatile Stand: Easy-to-install quick release stand with carrying handle and client mount
- Smart Packaging: Eco friendly easy-open box for streamlined monitor setup
- Flexible Connectivity: The VG2248 supports laptops, PCs, Macs and more with HDMI, USB, DisplayPort, VGA inputs



22"
DISPLAY



IPS
PANEL



1920 x 1080
RESOLUTION

Full HD (1920x1080p) Resolution



Product Description

Designed for the modern day office, the ViewSonic® VG2248 monitor delivers an efficient end-to-end enterprise experience. Featuring SuperClear® IPS panel technology and 1080p resolution, this 22" (21.5" viewable) monitor delivers crisp and clear images from nearly any viewing angle. For enhanced productivity, an advanced ergonomic design offers a wide range of customizable adjustments for maximum comfort including pivot, swivel, height adjustment, and tilt. With the ability to tilt an impressive 40-degrees, the VG2248 is ideal for users who prefer to work while standing up, as well as for those who like to use their screen for group discussions. Versatile connectivity options include HDMI, DisplayPort, VGA, and USB. This monitor is also shipped in eco-friendly biodegradable packaging, along with an easy-to-install quick release stand that makes for simple out-of-the box setup. The quick release stand also includes an integrated client mount and cable management features, making this monitor perfect for deployment in cloud-based environments.

Specifications

	More Information
UPC	766907000740
Screen Size	22"
Viewable Area (in.)	21.5
Panel Type	IPS
Display Resolution	1920 x 1080
Static Contrast Ratio	1,000:1
Dynamic Contrast Ratio	50,000,000:1
Light Source	WLED
Brightness	250 cd/m2
Colors	16.7M
Color Space Support	6 bits
Aspect Ratio	16:9
Response Time (Typical GTG)	14ms
Response Time (GTG w/OD)	7ms
Viewing Angles	178° horizontal, 178° vertical
Backlight Life (Hours)	30,000
Panel Surface	Anti-glare, Hard coating (3H)
PC Resolution (max)	1920 x 1080
Mac® Resolution (max)	1920 x 1080
USB Type A	4
USB Type B	1
VGA	1
HDMI 1.4 In	1
DisplayPort	1
Internal Speakers	2W (x2)
Eco Mode (Conserve)	14.1W
Eco Mode (optimized)	16.3W
Consumption (typical)	19.6W
Consumption (max)	55.4W
Voltage	AC 100-240V (universal), 50-60Hz
Stand-by	0.5W
Power Supply	Internal
Cable Organization	No

Kensington Lock Slot	1
Physical Controls	1,2,3,4,5,Power
On Screen Display	Auto Image Adjust, Contrast/Brightness, Input Select, Audio Adjust, Color Adjust, Information, Manual Image Adjust, Advanced Image Adjust, Setup Menu, Memory Recall (See user guide for complete OSD functionality)
Temperature	32-104° F (0 - 40° C)
Humidity (non-condensing)	20-90%
VESA Compatible	100 x 100 mm
Frequency Horizontal	24 ~ 82KHz
Frequency Vertical	50 ~ 75Hz
Digital Sync	TMDS for HDMI, PCI-E for DisplayPort
Height Adjust	130 mm / 5.1 in
Swivel	120°
Pivot (Right/Left)	90° / 90°
Tilt (Forward/Back)	40° / 5°
Regulations	cTUVus, FCC-B, ICES003, Energy Star Certified, EPEAT Certified, TUV Mexico CoC, Mexico Energy
Net (lbs)	11.9
Net Without Stand (lbs)	6.5
Gross (lbs)	17.4
Net (kg)	5.4
Net Without Stand (kg)	2.9
Gross (kg)	7.9
Packaging (in.)	22.4 x 8.3 x 15.0
Physical (in.)	19.6 x 14.7 x 8.0
Physical Without Stand (in.)	19.6 x 11.7 x 2.0
Packaging (mm)	570.0 x 210.0 x 380.0
Physical (mm)	498.5 x 372.7 x 202.2
Physical Without Stand (mm)	498.5 x 296.9 x 50.0
Package Contents	VG2248 Display, Power Cable, DP to DP Cable, USB 3.0 Upstream Cable, Quick Start Guide
Recycle/Disposal	Please dispose of in accordance with local, state or federal laws.
Warranty	Three-year limited warranty on parts, labor and backlight

UPC: 766907000740



Contact Sales
ViewSonic.com
 888.881.8781
 email: salesinfo@viewsonic.com