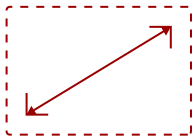


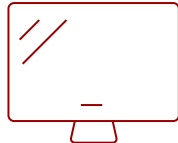
VA2259-SMH-S

## Key Features

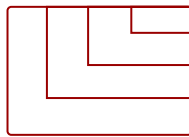
---



22"  
**DISPLAY**



IPS  
**PANEL**



Up to 1920x1080 non-interlaced  
**RESOLUTION**



## Product Description

---

The ViewSonic® VA2259-smh is a 22" (21.5" viewable) Full HD LED monitor designed for both office and home use. With SuperClear® IPS Panel technology, this monitor offers best-in-class screen performance with ultra-wide viewing angles. Vivid 1920x1080 resolution and dual speakers, combined with a sleek edge-to-edge frameless design, deliver an immersive viewing experience for home entertainment and multimedia applications. What's more, the minimalistic design of this monitor makes it perfect for nearly seamless multi-screen setups. HDMI and VGA inputs deliver flexible connectivity options for both computing and gaming environments, while ViewSonic's exclusive ViewMode feature provides intuitive presets for optimized screen performance in different applications. In addition, Flicker-Free technology and a Blue Light Filter help to minimize eyestrain from extended viewing periods. With ViewSonic's industry-leading 3-year limited warranty, this monitor is a solid long-term investment for enterprise and home applications.

## Specifications

---

[More Information](#)

UPC

766907955811

<b>Screen Size</b>	22"
<b>Viewable Area (in.)</b>	21.5
<b>Panel Type</b>	IPS
<b>Display Resolution</b>	1920 x 1080
<b>Static Contrast Ratio</b>	1,000:1
<b>Dynamic Contrast Ratio</b>	50,000,000:1
<b>Light Source</b>	LED
<b>Brightness</b>	250 cd/m2
<b>Colors</b>	16.7M
<b>Response Time (Typical GTG)</b>	14ms
<b>Response Time (GTG w/OD)</b>	7ms
<b>Viewing Angles</b>	178° horizontal, 178° vertical
<b>Backlight Life (Hours)</b>	30,000
<b>Panel Surface</b>	Anti-glare, hard-coating (3H)
<b>PC Resolution (max)</b>	Up to 1920x1080 non-interlaced
<b>Mac® Resolution (max)</b>	Up to 1920x1080
<b>3.5mm Audio In</b>	1
<b>3.5mm Audio Out</b>	1
<b>HDMI In</b>	1
<b>VGA</b>	1
<b>Power in</b>	3-pin plug (CEE22)
<b>Internal Speakers</b>	2-watt (x2)
<b>Eco Mode (Conserve)</b>	14W
<b>Eco Mode (optimized)</b>	18W
<b>Consumption (typical)</b>	22W
<b>Consumption (max)</b>	27W
<b>Voltage</b>	AC 100-240V (universal), 50-60Hz
<b>Cable Organization</b>	No
<b>Kensington Lock Slot</b>	1
<b>Physical Controls</b>	1, 2, Down, Up, Power
<b>On Screen Display</b>	Auto Image Adjust, Contrast/Brightness, Input Select, Audio Adjust, Color Adjust, Information, Manual Image Adjust, Advanced Image Adjust, Setup Menu, Memory Recall (See user guide for complete OSD functionality)
<b>Temperature</b>	32-104° F (0 - 40° C)
<b>Humidity (non-condensing)</b>	20-90%
<b>VESA Compatible</b>	100 x 100 mm
<b>Frequency Horizontal</b>	24~82kHz

<b>Frequency Vertical</b>	50~75Hz
<b>Analog Sync</b>	Separate Sync, Composite Sync, Sync on Green, TMDS
<b>Regulations</b>	CE, REACH, WEEE, cULus, FCC-B, ICES003, ENERGY STAR, Mexico CoC, Mexico Energy
<b>Net (lbs)</b>	6.3
<b>Net Without Stand (lbs)</b>	5.5
<b>Gross (lbs)</b>	9.5
<b>Net (kg)</b>	2.8
<b>Net Without Stand (kg)</b>	2.5
<b>Gross (kg)</b>	4.3
<b>Packaging (in.)</b>	22.1 x 17.4 x 6.1
<b>Physical (in.)</b>	19.7 x 14.8 x 7.9
<b>Physical Without Stand (in.)</b>	19.7 x 11.9 x 1.8
<b>Packaging (mm)</b>	562 x 443 x 155
<b>Physical (mm)</b>	499.7 x 375.1 x 200
<b>Physical Without Stand (mm)</b>	499.7 x 301.9 x 45.5
<b>Package Contents</b>	VA2259-smh monitor, Power cable, Audio cable, VGA cable, Quick Start Guide, ViewSonic Wizard CD
<b>Recycle/Disposal</b>	Please dispose of in accordance with local, state or federal laws.
<b>Warranty</b>	*Refurbished. 30-day DOA policy for full refund, with a 90-day repair warranty on parts and labor.
<b>Classification</b>	Discontinued, Refurbished

UPC: 766907955811



### Contact Sales

[ViewSonic.com](http://ViewSonic.com)

888.881.8781

email:

[salesinfo@viewsonic.com](mailto:salesinfo@viewsonic.com)