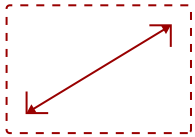


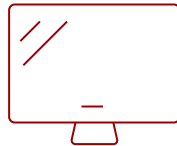
PA700W - 4500 LUMENS WXGA HIGH BRIGHTNESS PROJECTOR WITH DUAL HDMI, USB, VGA, RS232

## Key Features

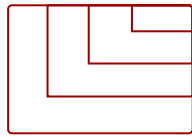
---



30 - 300 in. / 0.76 - 7.62 m  
**DISPLAY**



**PANEL**



VGA(640 x 480) to FullHD(1920 x 1080)  
**RESOLUTION**



## Product Description

---

Put your presentations in the best light with the ViewSonic® PA700W WXGA projector. This state-of-the-art high brightness projector combines a powerful 4,500 ANSI lumens with WXGA resolution for stunning images on a 300" screen. Dual HDMI ports empower you to seamlessly switch between different devices while a USB Type-A port lets you connect wireless dongles directly into the projector. And with streamlined software updates over USB, keeping your projector up-to-date with the latest features is easier than ever. Whether you consider the PA700W a business projector or an education projector, this powerful device is the perfect presentation tool for any environment.

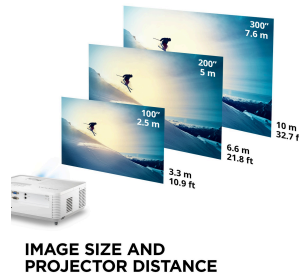
## Specifications

---

<b>UPC</b>	766907023350
<b>Light Source</b>	DLP Lamp
<b>Display Resolution</b>	WXGA (1280x800)
<b>Display Resolution</b>	1280 x 800
<b>Brightness (Lumens)</b>	4,500 ANSI
<b>Screen Size</b>	30 - 300 in. / 0.76 - 7.62 m
<b>Throw Distance</b>	1.18m-13.17m (100"@3.94m)
<b>Throw Ratio</b>	1.544-1.72
<b>Keystone</b>	Vertical (+/- 40°)
<b>Lens</b>	1.1x optical zoom
<b>Light Source (watt)</b>	240
<b>Light Source Life, Normal (hours)</b>	4000
<b>Light Source Life, Dynamic Eco-Mode (hours)</b>	12000
<b>Color Depth</b>	1.07 Billion Colors
<b>Dynamic Contrast Ratio</b>	22,000:1
<b>Aspect Ratio</b>	16:10
<b>Input Lag</b>	37ms
<b>Frequency Horizontal</b>	15K~102KHz
<b>Frequency Vertical</b>	23-120Hz
<b>PC Resolution (max)</b>	VGA(640 x 480) to FullHD(1920 x 1080)
<b>Mac® Resolution (max)</b>	480i, 480p, 576i, 576p, 720p, 1080i, 1080p
<b>USB 2.0 Type A</b>	1
<b>3.5mm Audio Out</b>	1
<b>3.5mm Audio In</b>	1
<b>Control (RS232)</b>	1
<b>HDMI 1.4 (with HDCP 1.4)</b>	2
<b>VGA In</b>	1
<b>VGA Out</b>	1
<b>Internal Speakers</b>	2W (x1)
<b>Voltage</b>	100-240V+/- 10%, 50/60Hz AC
<b>Consumption (typical)</b>	300W
<b>Stand-by</b>	<0.5W
<b>Physical Controls</b>	Keypad, Power key
<b>On Screen Display</b>	Display, Image, Power Management, Basic, Advanced, System, Information (See user guide for full OSD functionality)
<b>Temperature</b>	32-104° F (0 - 40° C)

<b>Kensington Lock Slot</b>	1
<b>Net (lbs)</b>	6.0
<b>Gross (lbs)</b>	8.4
<b>Net (kg)</b>	2.7
<b>Gross (kg)</b>	3.8
<b>Packaging (in.)</b>	15.7 x 13.3 x 6.6
<b>Physical (in.)</b>	12.2 x 9.2 x 4.5
<b>Packaging (mm)</b>	400.0 x 337.0 x 168.0
<b>Physical (mm)</b>	309.0 x 234.0 x 115.0
<b>Regulations</b>	cTUVus
<b>Package Contents</b>	Projector, power cable, remote control, Quick Start Guide
<b>Warranty</b>	*Refurbished. 30-day DOA policy for full refund, with a 90-day repair warranty on parts and labor.
<b>Recycle/Disposal</b>	Please dispose of in accordance with local, state or federal laws.

UPC: 766907023350



**Contact Sales**  
[ViewSonic.com](http://ViewSonic.com)  
 888.881.8781  
 email:  
[salesinfo@viewsonic.com](mailto:salesinfo@viewsonic.com)