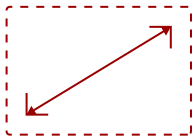
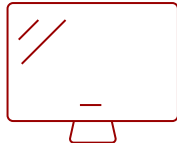


VX2252MH-S

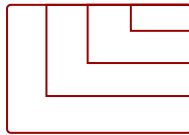
Key Features



22"
DISPLAY



TN
PANEL



1920x1080
RESOLUTION



Product Description

ViewSonic's VX2252mh is a 22" (21.5" viewable) Full HD, glossy-finish display that offers the ultimate visual experience for gaming and multimedia entertainment. The VX2252mh features ClearMotiv II technology that delivers 2ms ultra-fast response time for blur-free images during extreme gaming, and an ultra-high 50M:1 MEGA Dynamic Contrast Ratio for sharp, crisp color performance for enjoying movies. Integrated D-sub, DVI and HDMI inputs provide flexible connectivity for high-definition multimedia devices and gaming consoles, and dual built-in 2W stereo speakers complete the package for multimedia enjoyment. With a VESA-mountable design, the VX2252mh offers flexible mounting options for any of your gaming and video entertainment needs. A 3-year limited warranty and the industry's best pixel performance policy make the VX2252mh a great long-term investment.

Specifications

More Information

UPC

766907882117

Screen Size

22"

| | |
|------------------------------------|--|
| Panel Type | TN |
| Display Resolution | 1920 x 1080 |
| Static Contrast Ratio | 1,000:1 |
| Dynamic Contrast Ratio | 20M:1 |
| Light Source | LED |
| Brightness | 250 cd/m2 |
| Response Time (Typical GTG) | 2ms |
| Viewing Angles | 170° horizontal, 160° vertical |
| Backlight Life (Hours) | 30,000 |
| Panel Surface | Anti-glare, hard-coating (3H) |
| PC Resolution (max) | 1920x1080 |
| Mac® Resolution (max) | 1920x1080 |
| 3.5mm Audio In | 1 |
| 3.5mm Audio Out | 1 |
| HDMI In | 1 |
| VGA | 1 |
| DVI-D | 1 |
| Internal Speakers | 2W (x2) |
| Eco Mode (Conserve) | 16W |
| Eco Mode (optimized) | 19W |
| Consumption (typical) | 22W |
| Voltage | AC 100-240V (universal), 50-60Hz |
| Cable Organization | No |
| Kensington Lock Slot | 1 |
| Physical Controls | Power, 1, 2, up, down |
| On Screen Display | uto Image Adjust, Contrast/Brightness, Input Select, Color Adjust, Audio Adjust, Information, Manual Image Adjust, Setup Menu, Memory Recall (See user guide for complete OSD functionality) |
| Temperature | 32-104° F (0 - 40° C) |
| Humidity (non-condensing) | 20-90% |
| Analog Sync | Separate Sync |
| Tilt (Forward/Back) | 0° / 20° |
| Regulations | cULus, FCC-B, ICES003, Energy Star 7.0 (by panel), Mexico Energy,UL-MX-CoC, CE EMC, CB, RoHS Green BOM List & RoHS DoC, ErP, REACH SVHC List& DoC, WEEE, UkrSEPRO+DoC, EAC |
| Net (lbs) | 7.3 |
| Net Without Stand (lbs) | 6.4 |
| Gross (lbs) | 10.6 |
| Net (kg) | 3.3 |

| | |
|-------------------------------------|--|
| Net Without Stand (kg) | 2.9 |
| Gross (kg) | 4.8 |
| Packaging (in.) | 22.1 x 17.8 x 5.0 |
| Physical (in.) | 20.1 x 15.8 x 8.8 |
| Physical Without Stand (in.) | 20.1 x 12.9 x 2.1 |
| Packaging (mm) | 560.0 x 452.0 x 128.0 |
| Physical (mm) | 511.1 x 402 x 222.5 |
| Physical Without Stand (mm) | 511.1 x 327.2 x 53.0 |
| Package Contents | VX2252mh display, power cable, VGA cable, DVI cable, audio cable, Quick Start Guide, ViewSonic Wizard CD |
| Power Management | ENERGY STAR® standards |
| Recycle/Disposal | Please dispose of in accordance with local, state or federal laws. |
| Warranty | *Refurbished. 30-day DOA policy for full refund, with a 90-day repair warranty on parts and labor. |
| Classification | Discontinued, Refurbished |

UPC: 766907882117



Contact Sales
ViewSonic.com
 888.881.8781 
 email:
salesinfo@viewsonic.com