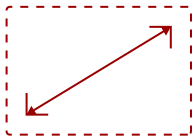
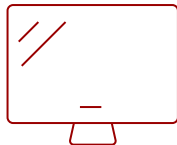


TD2220-S

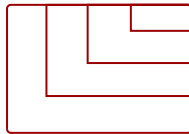
Key Features



22"
DISPLAY



TN
PANEL



RESOLUTION



Product Description

The 22" (21.5" viewable) ViewSonic TD2220 is a multi-touch Full HD LED backlit monitor with 1920x1080 resolution, integrated speakers, DVI & VGA inputs and VESA mountable design. It has 20,000,000:1 MEGA Dynamic Contrast Ratio for sharp crisp images, and Eco-mode come standard in the new 22" (21.5" viewable) offering. Perfect for both commercial and consumer applications, the TD2220 supports the USB HID Touch driver and is fully compatible with Windows 7. The TD2220 is a one-stop solution for your multi-touch monitor needs. You will also get the most out of your investment with ViewSonic's strongest pixel performance guarantee, 3-year limited warranty, as well as ENERGY STAR and EPEAT certifications. Touch the Difference with the ViewSonic TD2220 interactive multi-touch display.

Specifications

More Information

UPC	766907864113
Screen Size	22"

Panel Type	TN
Display Resolution	1920 x 1080
Static Contrast Ratio	1,000:1
Dynamic Contrast Ratio	20M:1
Light Source	LED
Brightness	200 cd/m2
Response Time (Typical GTG)	5ms
Viewing Angles	170° horizontal, 160° vertical
Backlight Life (Hours)	40,000
Panel Surface	8H Scratch Resistant Surface Hardness
USB 2.0 Type A	2
USB 2.0 Type B	1
3.5mm Audio In	1
DVI-D	1
Touch Technology	Optical
Touch Points	2-Point Touch
Internal Speakers	2-watt (x2)
Eco Mode (Conserve)	18W
Eco Mode (optimized)	21W
Consumption (typical)	26W
Consumption (max)	43W
Voltage	AC 100-240V (universal), 50-60Hz
Cable Organization	No
Kensington Lock Slot	1
Physical Controls	1, 2, Down, Up, Power
On Screen Display	Auto Image Adjust, Contrast/Brightness, Input Select (D-SUB, DVI-D), Audio Adjust (Volume, Mute), Color Adjust (sRGB, Bluish, Cool, Native, Warm, User Color [R,G,B]), Information, Manual Image Adjust (H/V Position, Horizontal Size, Fine Tune, Sharpness, D
Temperature	32-104° F (0 - 40° C)
Humidity (non-condensing)	20-90%
VESA Compatible	100 x 100 mm
Frequency Horizontal	24~83kHz
Frequency Vertical	50~76Hz
Analog Sync	Separate Sync
Regulations	CE, REACH, WEEE, UkrSEPRO, EAC, cULus, FCC-B, ICES003, Energy Star, EPEAT, UL-MX-CoC, Mexico Energy
Net (lbs)	1085
Net Without Stand (lbs)	8.73

Gross (lbs)	14.22
Net (kg)	4.92
Net Without Stand (kg)	3.96
Gross (kg)	6.45
Packaging (in.)	22.44 x 16.81 x 8.43
Physical (in.)	20.1 x 14.4 x 9.5
Physical Without Stand (in.)	20.1 x 12.2 x 2.6
Packaging (mm)	570 x 427 x 214
Physical (mm)	511.5 x 364.6 x 240.0
Physical Without Stand (mm)	511.5 x 310.4 x 66.5
Package Contents	TD2220 display, power cable, audio cable, VGA cable, DVI cable, USB Cable, Quick Start Guide, ViewSonic Wizard CD
Power Management	ENERGY STAR® standards
Recycle/Disposal	Please dispose of in accordance with local, state or federal laws.
Warranty	*Refurbished. 30-day DOA policy for full refund, with a 90-day repair warranty on parts and labor.
Classification	Discontinued, Refurbished

UPC: 766907864113



Contact Sales

ViewSonic.com

888.881.8781

email:

salesinfo@viewsonic.com