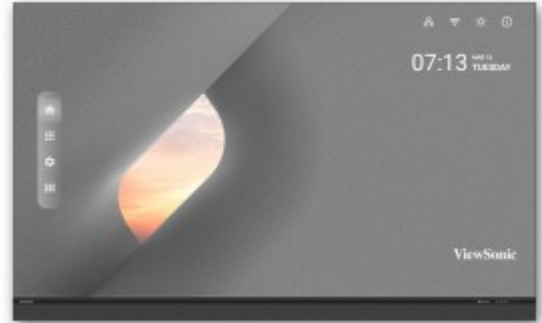


## 136" ALL-IN-ONE DIRECT VIEW LED DISPLAY | LDM136-151C

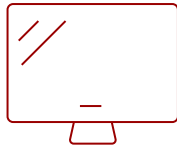
### Key Features

---

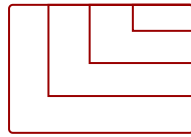
- SEAMLESS AND IMMERSIVE SCREEN: Bezel-less design, vibrant colors, and sharp visuals in any lighting environment.
- DURABLE COB TECHNOLOGY: IP54 dust/moisture resistance and IK08 impact protection.
- ALL-IN-ONE INTEGRATION: Built-in power, control, and image systems for quick, simple installation.
- FLEXIBLE CONTROL BAR PLACEMENT: Detachable bar mounts up to 30 feet away for a clean setup.
- EASY FRONT SERVICEABILITY: Front access LED modules allow fast maintenance with included vacuum tool.



136"  
**DISPLAY**



**PANEL**



3840x2160  
**RESOLUTION**



### Product Description

---

The ViewSonic® LDM136-151C is an innovative All-in-One Direct View LED display. With a huge 136" screen size and advanced Chip-on-Board (COB) technology, the LDM136-151C is built to impress as a centerpiece in any higher education auditorium or lecture hall, as well as in corporate conference rooms, boardrooms and lobbies. This display boasts immersive and stunning visuals thanks to Chip-on-Board (COB) technology with Full HD resolution that pairs perfectly with an impressive 600-nit high brightness and 10,000:1 contrast ratio. This ensures content and messages are always easy to see, even in brightly lit environments. As a true all-in-one solution, the LDM136-151C includes the display, controller, and all components in a single part number, making specification, purchasing, and setup incredibly simple. With a high brightness of 600 nits, an incredible 10,000:1 contrast ratio, and powerful dual 30W speakers, this display provides vibrant, high-impact visuals and immersive sound for an exceptional viewing experience.

# Specifications

	More Information
<b>UPC</b>	766907041323
<b>OS</b>	Android 9.0
<b>GPU</b>	ARM Mali-T860MP4
<b>CPU</b>	RK3399
<b>Memory</b>	4GB DDR4
<b>Storage</b>	Total 32GB (26GB available storage)
<b>Operating System</b>	Android 9.0
<b>CPU</b>	RK3399
<b>GPU</b>	ARM Mali-T860MP4
<b>Memory</b>	4GB
<b>Storage</b>	Total 32GB (26GB available storage)
<b>Internal Speakers</b>	30W x 2
<b>PC Resolution (max)</b>	3840x2160
<b>Mac® Resolution (max)</b>	3840x2160
<b>HDMI 2.0 (with HDCP 2.2)</b>	4
<b>HDMI 2.0 Out</b>	1
<b>3.5mm Audio Out</b>	2
<b>SPDIF</b>	1
<b>USB Type A</b>	3
<b>RS232</b>	1
<b>Ethernet LAN (RJ45)</b>	2
<b>IR in</b>	1
<b>Voltage</b>	100-120V/20A ~ 50/60Hz
<b>Consumption (max)</b>	1095W
<b>Consumption (typical)</b>	400W
<b>Stand-by</b>	<0.5W
<b>On Screen Display</b>	Yes
<b>Remote Control</b>	Yes
<b>Temperature</b>	32-104° F (0 - 40° C)
<b>Humidity (non-condensing)</b>	20-80%
<b>Net (lbs)</b>	373
<b>Gross (lbs)</b>	600
<b>Net (kg)</b>	169

<b>Gross (kg)</b>	272
<b>Packaging (in.)</b>	77.95x40.16x48.03
<b>Physical (in.)</b>	118.58x72.22x1.61
<b>Physical with Wall Mount (in.)</b>	118.58x72.22x2.35
<b>Packaging (mm)</b>	1980x1020x1220
<b>Physical (mm)</b>	3012x1834.5x41
<b>Physical with Wall Mount (mm)</b>	3012x1834.5x59.8
<b>Warranty</b>	3-year limited warranty on parts and labor, on-site service
<b>Recycle/Disposal</b>	Please dispose of in accordance with local, state or federal laws.
<b>Package Contents</b>	Power Cord, LAN Cable, IR Extender Cable, Remote Control, Installation Guide, Wall Mount, LD-MK-004, LD-MK-006
<b>Regulations</b>	cTUVus, FCC, RoHS
<b>Display Type</b>	Direct View LED
<b>Screen Size</b>	136"
<b>Viewable Area (in.)</b>	118 (H) x 66.4 (V)
<b>LED Pitch Size (mm)</b>	1.56
<b>LED Grayscale</b>	13 bits
<b>Display Resolution</b>	1920 x 1080
<b>Refresh Rate</b>	3,840Hz
<b>Aspect Ratio</b>	16:9
<b>Static Contrast Ratio</b>	10,000:1
<b>Backlight Life (Hours)</b>	100,000
<b>Brightness</b>	600 nits (100 levels adjustable)
<b>Viewing Angles</b>	170° horizontal, 170° vertical
<b>Impact Protection Rating</b>	IK08 (Front)

UPC: 766907041323



**Contact Sales**  
[ViewSonic.com](http://ViewSonic.com)  
888.881.8781  
email: [salesinfo@viewsonic.com](mailto:salesinfo@viewsonic.com)