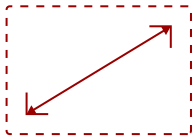


# 86" 4K 16:9 ANDROID EDLA VIEWBOARD INTERACTIVE DISPLAY WITH INTEGRATED MICROPHONE AND USB-C | IFP8641

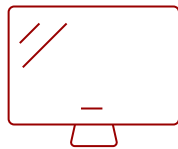
## Key Features

---

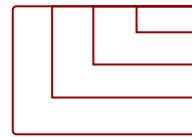
- Smooth Multitasking Without Lag or Delays
- Immersive Audio for Maximum Engagement
- One-cable USB-C Simplicity
- Responsive Writing Experience
- Engaging Lessons with ViewSonic® Education Software
- Robust Security and Centralized Management
- Native Access to the Google Education Ecosystem
- Eco-Friendly & Energy Efficient



86"  
DISPLAY



PANEL



RESOLUTION



## Product Description

---

The ViewSonic® ViewBoard® IFP8641 interactive display delivers the right balance of features, performance, and value for today's classrooms and meeting spaces. This 86-inch touchscreen is designed to feel premium and intuitive, making it easy for educators and teams to get up and running with minimal setup. Powered by the latest Android™ platform with EDLA certification, it provides secure, built-in access to Google Workspace, Microsoft 365, and familiar apps. Everything works right away, so users can focus on sharing ideas instead of troubleshooting technology.

One-cable USB-C simplifies connectivity, while powerful built-in audio ensures everyone can hear and be heard. Energy-efficient features help reduce power consumption over time, making the IFP8641 a smart, future-ready choice that's easy to deploy, easy to use, and easy on budgets.

## Specifications

---

[More Information](#)

UPC

766907038958

<b>OS</b>	ViewBoard OS EDLA
<b>CPU</b>	Rockchip RK3576
<b>Memory</b>	8GB LPDDR
<b>Storage</b>	128GB eMMC
<b>Microphone</b>	Beamforming array x 8, full duplex echo cancellation
<b>Internal Speakers</b>	25W*2 + 20W = 70W
<b>HDMI 2.1 In</b>	3
<b>HDMI Out</b>	1
<b>VGA</b>	1
<b>DisplayPort</b>	1
<b>SPDIF</b>	1
<b>USB Type A</b>	5
<b>USB Type B</b>	3
<b>USB Type C</b>	100W x 1, 15W x 1
<b>RS232</b>	1
<b>Ethernet LAN (RJ45)</b>	2
<b>Intel® OPS Slot In (80-pin)</b>	1
<b>Line In</b>	1
<b>Voltage</b>	100-240 VAC
<b>Stand-by</b>	<0.5W
<b>Physical Controls</b>	7 (Power, Home, Input source, Touch, Freeze, Volume+, Volume-)
<b>Temperature</b>	32-104° F (0 - 40° C)
<b>Non-Operating Temperature</b>	-4°F to 140°F (-20C to 60C)
<b>Humidity (non-condensing)</b>	20-80%
<b>Touch Technology</b>	IR Recognition
<b>Touch Points</b>	64 points
<b>Tip Detection</b>	Dual tips: 3mm and 10mm / Finger: 12-15mm / Palm: 30mm
<b>Other</b>	Palm Rejection
<b>Latency</b>	≤5ms
<b>Net (lbs)</b>	128.31
<b>Gross (lbs)</b>	160.72
<b>Net (kg)</b>	58.2
<b>Gross (kg)</b>	72.9
<b>Packaging (in.)</b>	82.68x50.91x6.93
<b>Physical (in.)</b>	77.04x46.08x3.44
<b>Packaging (mm)</b>	2100x1293x176

<b>Physical (mm)</b>	1956.7x1170.5x87.4
<b>VESA Compatible</b>	800 x 600 mm
<b>Warranty</b>	3-year limited warranty on parts, labor and backlight, onsite warranty
<b>Recycle/Disposal</b>	Please dispose of in accordance with local, state or federal laws.
<b>Package Contents</b>	IFP8641, Power Cord (3m), USB-C Cable (1.8m) Remote control with AAA battery, USB Touch Cable (3m), Stylus x 2 (a set), Quick Start Guide + Compliance statement, RS232 adapter, Clamp x 5, Camera Plate, Screw x 4, HDMI cable 3m, VB-WIFI-004 WiFi Adapter
<b>Regulations</b>	CTUVus, FCC, Energy 8.0, EPEAT, CEC
<b>Ethernet LAN</b>	2 (10/100/1000 Mbps BaseT for Android and OPS)
<b>Wifi</b>	VB-WIFI-004 adapter, 802.11AX + Bluetooth 5.0
<b>Bluetooth</b>	Bluetooth 5.0
<b>Screen Size</b>	86"
<b>Light Source</b>	DLED
<b>Display Resolution</b>	3840 x 2160
<b>Refresh Rate</b>	60Hz
<b>Aspect Ratio</b>	16:9
<b>Static Contrast Ratio</b>	5,000:1
<b>Dynamic Contrast Ratio</b>	5,000:1
<b>Backlight Life (Hours)</b>	65,000
<b>Brightness</b>	400 cd/m2
<b>Response Time (Typical GTG)</b>	8ms
<b>Viewing Angles</b>	178° horizontal, 178° vertical
<b>Panel Surface</b>	Anti-glare, 9H Pencil hardness / 3.2mm thickness

UPC: 766907038958



### Contact Sales

[ViewSonic.com](http://ViewSonic.com)

888.881.8781

email: [salesinfo@viewsonic.com](mailto:salesinfo@viewsonic.com)