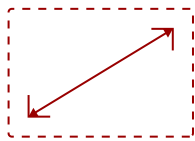


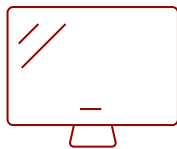
VIEWSONIC 27" 1080P WIRELESS CASTING MONITOR | VG2748N

Key Features

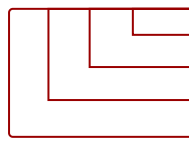
- **VERSATILE FULL HD MONITOR:** 27 inch 1920 x 1080p monitor with thin bezels and a smooth 100 Hz refresh rate
- **WIRELESS CASTING SUPPORT:** Included ViewShare dongle enables wireless screen sharing via WiFi Display, Miracast, and AirPlay
- **ERGONOMIC STAND:** Tilt, swivel, pivot, and height adjustment for personalized comfort
- **VERSATILE CONNECTIONS:** HDMI, DisplayPort, VGA, and USB inputs support a variety of devices
- **USB-C POWER DELIVERY:** ViewShare dongle supports up to 60W USB-C power delivery when connected to a power source



27"
DISPLAY



IPS
PANEL



1920 x 1080
RESOLUTION



Product Description

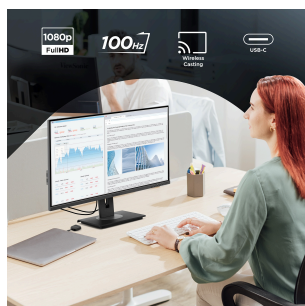
Transform any desk into a high powered workstation with the ViewSonic VG2748N monitor. Enjoy seamless connectivity and a streamlined, cable-free workspace using the included ViewShare dongle. This 27-inch Full HD IPS monitor works with WiFi Display, Miracast, and AirPlay through the dongle, allowing easy content sharing from compatible devices. The WiFi-enabled dongle also supports up to 60W USB-C power delivery when connected to a power source, helping keep laptops charged without extra cables. When a wired connection is preferred or required, the VG2748N includes HDMI, DisplayPort, and VGA inputs, along with a built in USB hub for accessories. An advanced ergonomic stand supports tilt, swivel, pivot, and height adjustment for all day comfort. Eco-friendly packaging and a low blue light solution round out a monitor designed for modern work environments.

Specifications

UPC	766907036695
Screen Size	27"
Viewable Area (in.)	27
Panel Type	IPS
Display Resolution	1920 x 1080
Display Resolution	Full HD (1920x1080)
Static Contrast Ratio	1,000:1
Dynamic Contrast Ratio	50,000,000:1
Light Source	LED
Brightness	250 cd/m2
Colors	16.7M
Color Space Support	6 bit + FRC
Aspect Ratio	16:9
Response Time (Typical GTG)	5ms
Viewing Angles	178° horizontal, 178° vertical
Backlight Life (Hours)	30,000
Panel Surface	Anti-Glare type, Hard-coating (3H), Haze 25%
Refresh Rate	100Hz
PC Resolution (max)	1920 x 1080
Mac® Resolution (max)	1920 x 1080
USB Type A	4
USB Type B	1
USB Type C	1 (via the ViewShare Dongle)
VGA	1
HDMI 1.4 In	1
DisplayPort	1
Internal Speakers	2W (x2)
Eco Mode (Conserve)	17.8w
Eco Mode (optimized)	21.1w
Consumption (typical)	25.3w
Consumption (max)	65w
Voltage	AC 100-240V (universal), 50-60Hz
Stand-by	0.5W
Power Supply	Internal
Cable Organization	No
Kensington Lock Slot	1

Physical Controls	Key 1 (eye), Key 2, Key 3, Key 4, Key 5, Key 6 (power)
On Screen Display	Input Select, Audio Adjust, ViewMode, Color Adjust, Manual Image Adjust, Setup Menu
Temperature	32-104° F (0 - 40° C)
Humidity (non-condensing)	20-90%
VESA Compatible	100 x 100 mm
Frequency Horizontal	VGA = 24 ~ 82 KHz / HDMI 1.4 & DisplayPort = 24 ~ 110 KHz / USB-C = 67.5 ~ 67.5 KHz
Frequency Vertical	VGA = 50 ~ 75 Hz / HDMI 1.4 & DisplayPort = 50 ~ 100 Hz / USB-C = 60 ~ 160 Hz
Height Adjust	130 mm / 5.1 in
Swivel	120°
Pivot (Right/Left)	90° / 90°
Tilt (Forward/Back)	5° / 40°
Regulations	cTUVus, FCC-B, ICES003, Energy Star 8.0, EPEAT Silver, CEC
Net (lbs)	14.7
Net Without Stand (lbs)	9.5
Gross (lbs)	21.5
Net (kg)	6.7
Net Without Stand (kg)	4.3
Gross (kg)	9.7
Packaging (in.)	27.2" x 16.9" x 8.6"
Physical (in.)	24.08" x 15.99~20.99" x 7.96"
Physical Without Stand (in.)	24.08" x 14.24" x 2.03"
Packaging (mm)	692 mm x 430mm x 218mm
Physical (mm)	611.73mm x 406.19~533.24mm x 202.18mm
Physical Without Stand (mm)	611.73mm x 361.7mm x 51.5mm
Package Contents	LCD Display, Power Cable, HDMI Cable, USB A/B Cable, ViewShare Dongle, Quick Start Guide
Recycle/Disposal	Please dispose of in accordance with local, state or federal laws.
Warranty	Three-year limited warranty on parts, labor and backlight

UPC: 766907036695



Contact Sales
ViewSonic.com
 888.881.8781
 email:
salesinfo@viewsonic.com