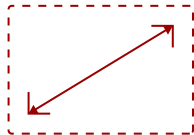


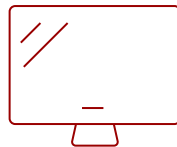
VIEWSONIC 22" 1080P ERGONOMIC VA MONITOR WITH HDMI, DP, AND VGA | VG2242

Key Features

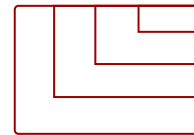
- 22 INCH FULL HD MONITOR: 1920 x 1080p resolution with a smooth 120 Hz refresh rate
- EDGE-TO-EDGE DESIGN: Frameless screen ideal for clean, modern multi monitor setups
- FULLY ADJUSTABLE STAND: Tilt, swivel, pivot, and height adjustment for personalized comfort
- VERSATILE CONNECTIONS: HDMI, DisplayPort, USB, and VGA support a range of devices
- EYE CARE FEATURES: Flicker-free technology with a blue-light filter can help reduce strain and fatigue
- SMART PACKAGING: Eco friendly easy-open box for streamlined monitor setup



22"
DISPLAY



VA
PANEL



1920 x 1080
RESOLUTION



Product Description

Built for productivity and comfort, the ViewSonic VG2242 is a 22" Full HD monitor that fits seamlessly into modern workspaces. Its 1080p resolution and smooth 120 Hz refresh rate provide sharp detail and fluid visuals, while the slim, frameless design makes it ideal for single or multi-monitor setups. An advanced ergonomic stand allows you to adjust height, tilt, swivel, and pivot to stay comfortable throughout the day. HDMI, DisplayPort, VGA, and USB connectivity give you the flexibility to connect laptops, PCs, and accessories with ease. Eye comfort features like Flicker Free technology and a Low Blue Light solution help reduce eye fatigue.* Eco-friendly packaging and EPEAT and Energy Star certifications also make this monitor a more sustainable choice.

*Actual performance, user experience, and results may vary depending on system configuration, environment, and usage conditions.

Specifications

More Information

UPC	766907036862
Screen Size	22"
Viewable Area (in.)	21.5

Panel Type	VA
Display Resolution	1920 x 1080
Display Resolution	Full HD (1920x1080)
Static Contrast Ratio	4,000:1
Dynamic Contrast Ratio	80M:1
Light Source	LED
Brightness	250 cd/m ²
Aspect Ratio	16:9
Response Time (Typical GTG)	5ms
Viewing Angles	178° horizontal, 178° vertical
Backlight Life (Hours)	30,000
Panel Surface	Anti-Glare type, Hard-coating (3H), Haze 25%
Refresh Rate	120Hz
PC Resolution (max)	1920 x 1080
Mac® Resolution (max)	1920 x 1080
USB Type A	4
USB Type B	1
VGA	1
HDMI 1.4 In	1
DisplayPort	1
Internal Speakers	2W (x2)
Eco Mode (Conserve)	17.5w
Eco Mode (optimized)	19.5w
Consumption (typical)	21.5w
Consumption (max)	60w
Voltage	AC 100-240V (universal), 50-60Hz
Stand-by	0.5W
Power Supply	Internal
Cable Organization	No
Kensington Lock Slot	1
Physical Controls	Joystick key: Up, Right, Down, Left Center; Shortcut, Power
On Screen Display	Input Select, Audio Adjust, ViewMode, Color Adjust, Manual Image Adjust, Setup Menu
Temperature	32-104° F (0 - 40° C)
Humidity (non-condensing)	20-90%
VESA Compatible	100 x 100 mm
Frequency Horizontal	HDMI 1.4 & DisplayPort = 24 ~ 110 KHz / VGA = 24 ~ 82 KHz

Frequency Vertical	HDMI 1.4 & DisplayPort = 50 ~ 120 Hz / VGA = 50 ~ 75 Hz
Height Adjust	150 mm / 5.9 in
Swivel	-45 ~ 45
Pivot (Right/Left)	90° / 90°
Tilt (Forward/Back)	5° / 21°
Regulations	cSGSUS, FCC-B, ICES003, Energy Star 8.0, EPEAT Silver
Net (lbs)	9
Net Without Stand (lbs)	5.4
Gross (lbs)	15.1
Net (kg)	4.1
Net Without Stand (kg)	2.5
Gross (kg)	6.8
Packaging (in.)	23.4 x 15.7 x 7.8
Physical (in.)	19.41 x 15.01~19.74 x 9.04
Physical Without Stand (in.)	19.41 x 11.10 x 1.81
Packaging (mm)	595.0 x 400.0 x 198.0
Physical (mm)	493.13 x 381.29~501.63 x 229.55
Physical Without Stand (mm)	493.13 x 282.01 x 46.0
Package Contents	LCD Display, Power Cable, HDMI Cable, USB A/B Cable, Quick Start Guide
Recycle/Disposal	Please dispose of in accordance with local, state or federal laws.
Warranty	Three-year limited warranty on parts, labor and backlight

UPC: 766907036862



Contact Sales

ViewSonic.com

888.881.8781

email: salesinfo@viewsonic.com