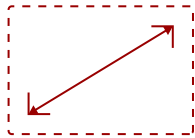


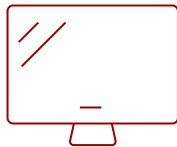
IFP8653-ED-M - 86" 4K 16:9 ANDROID EDLA VIEWBOARD INTERACTIVE DISPLAY WITH USB-C, TAA-COMPLIANT

Key Features

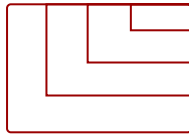
- Robust Security and Centralized Management
 - Seamless Integration with Google and Microsoft
 - Enhanced Engagement with ViewSonic® Software
 - Easy Access with Quick User Authentication
 - Incredible Writing Experience
 - Immersive Audio for Maximum Engagement
 - High-Performance Multitasking
 - Seamless Android Experience with Backward Compatibility
 - Eco-Friendly & Energy Efficient
-



86"
DISPLAY



IPS
PANEL



RESOLUTION



Product Description

The ViewSonic® ViewBoard® IFP8653 TAA-compliant interactive display delivers powerful collaboration, secure connectivity, and effortless integration for any meeting room or classroom. Powered by the latest Android™ EDLA platform, it works seamlessly with Google and Microsoft 365, ensuring a familiar, secure, and reliable workspace for teams and learners alike. Pre-loaded with ViewSonic software tools including myViewBoard®, AirSync™, and Manager™, it provides built-in solutions for content creation, device management, and real-time engagement. With immersive 52W front-facing speakers, a beamforming microphone array, and Write-Away technology for instant annotation, the 86" IFP8653 keeps communication clear and collaboration flowing. Meeting leading energy efficiency standards, the IFP8653 helps organizations achieve their sustainability goals while elevating productivity and interaction.

Specifications

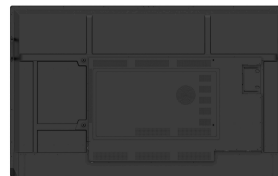
More Information

UPC	766907033106
OS	ViewBoard OS EDLA

CPU	Quad-core
Memory	8GB LPDDR
Storage	128GB eMMC
Microphone	8 array mic (distance: 5M typ., 8M max.)
Internal Speakers	16W (x2)
Subwoofer	20W (x1)
HDMI 2.1 In	4
HDMI Out	1
VGA	1
DisplayPort	1
SPDIF	1
USB Type A	5
USB Type B	3
USB Type C	4
RS232	1
Ethernet LAN (RJ45)	2
Intel® OPS Slot In (80-pin)	1
Line In	1
Voltage	100-240 VAC
Consumption (typical)	102W
Stand-by	<0.5W
Temperature	32-104° F (0 - 40° C)
Non-Operating Temperature	-4°F to 140°F (-20C to 60C)
Humidity (non-condensing)	20-80%
Touch Technology	Infrared
Touch Points	Windows: 40, Android: 20
Latency	≤5ms
Net (lbs)	139.66
Gross (lbs)	179.01
Net (kg)	63.35
Gross (kg)	81.2
Packaging (in.)	85.04 x 51.57 x 8.86
Physical (in.)	76.87 x 47.13 x 4.66
Packaging (mm)	2160.0 x 1310.0 x 225.0
Physical (mm)	1952.4 x 1197.2 x 118.4
VESA Compatible	800 x 600 mm

NFC	Yes
Warranty	3-year limited warranty on parts, labor and backlight, onsite warranty
Recycle/Disposal	Please dispose of in accordance with local, state or federal laws.
Package Contents	IFP8653, Power Cord (3m), USB-C Cable, Remote control, USB Touch Cable (3m), Stylus x 2, Quick Start Guide + Compliance statement, RS232 adapter, Clamp x 5, Camera Plate, Screw x 8 (camera 2+2, wall mount 4), HDMI cable 3m, VB-WIFI-005 WiFi Adapter
Regulations	CTUVus, FCC, Energy 8.0, EPEAT, CEC
Ethernet LAN	(10/100/1000M) (USB Type-C & Android 10/100, PC 10/100/1000)
Wifi	VB-WIFI-005 WiFi Adapter
Bluetooth	Bluetooth 5.2
Display Type	TFT LCD module
Screen Size	86"
Light Source	DLED
Display Resolution	3840 x 2160
Refresh Rate	60Hz
Panel Type	IPS
Aspect Ratio	16:9
Static Contrast Ratio	1,200:1
Dynamic Contrast Ratio	5,000:1
Backlight Life (Hours)	50,000
Brightness	450 cd/m2
Response Time (Typical GTG)	8ms
Viewing Angles	178° horizontal, 178° vertical
Panel Surface	Glass Anti-Glare + Anti-Fingerprint (7H Mohs; 9H pencil hardness)

UPC: 766907033106



Contact Sales

ViewSonic.com

888.881.8781

email:

salesinfo@viewsonic.com