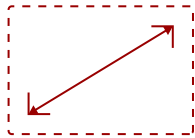


# IFP6553-ED-M - 65" 4K 16:9 ANDROID™ EDLA VIEWBOARD INTERACTIVE DISPLAY WITH USB-C, TAA-COMPLIANT

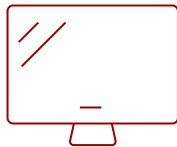
## Key Features

---

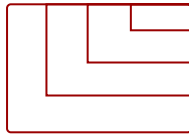
- Robust Security and Centralized Management
  - Seamless Integration with Google and Microsoft
  - Enhanced Engagement with ViewSonic® Software
  - Easy Access with Quick User Authentication
  - Incredible Writing Experience
  - Immersive Audio for Maximum Engagement
  - High-Performance Multitasking
  - Seamless Android Experience with Backward Compatibility
  - Eco-Friendly & Energy Efficient
- 



65"  
DISPLAY



ADS  
PANEL



RESOLUTION



## Product Description

---

The ViewSonic® ViewBoard® IFP6553 TAA-compliant interactive display delivers powerful collaboration, secure connectivity, and effortless integration for any meeting room or classroom. Powered by the latest Android™ EDLA platform, it works seamlessly with Google and Microsoft 365, ensuring a familiar, secure, and reliable workspace for teams and learners alike. Pre-loaded with ViewSonic software tools including myViewBoard®, AirSync™, and Manager™, it provides built-in solutions for content creation, device management, and real-time engagement. With immersive 52W front-facing speakers, a beamforming microphone array, and Write-Away technology for instant annotation, the 65" IFP6553 keeps communication clear and collaboration flowing. Meeting leading energy efficiency standards, the IFP6553 helps organizations achieve their sustainability goals while elevating productivity and interaction.

## Specifications

---

### More Information

UPC	766907033083
OS	ViewBoard OS EDLA

<b>CPU</b>	Quad-core
<b>Memory</b>	8GB LPDDR
<b>Storage</b>	128GB eMMC
<b>Microphone</b>	8 array mic (distance: 5M typ., 8M max.)
<b>Internal Speakers</b>	16W (x2)
<b>Subwoofer</b>	20W (x1)
<b>HDMI 2.1 In</b>	4
<b>HDMI Out</b>	1
<b>VGA</b>	1
<b>DisplayPort</b>	1
<b>SPDIF</b>	1
<b>USB Type A</b>	5
<b>USB Type B</b>	3
<b>USB Type C</b>	4
<b>RS232</b>	1
<b>Ethernet LAN (RJ45)</b>	2
<b>Intel® OPS Slot In (80-pin)</b>	1
<b>Line In</b>	1
<b>Voltage</b>	100-240 VAC
<b>Consumption (typical)</b>	86W
<b>Stand-by</b>	<0.5W
<b>Temperature</b>	32-104° F (0 - 40° C)
<b>Non-Operating Temperature</b>	-4°F to 140°F (-20C to 60C)
<b>Humidity (non-condensing)</b>	20-80%
<b>Touch Technology</b>	Infrared
<b>Touch Points</b>	Windows: 40, Android: 20
<b>Latency</b>	≤5ms
<b>Net (lbs)</b>	85.98
<b>Gross (lbs)</b>	107.47
<b>Net (kg)</b>	39.0
<b>Gross (kg)</b>	48.75
<b>Packaging (in.)</b>	65.35 x 41.14 x 8.66
<b>Physical (in.)</b>	58.49 x 36.8 x 4.65
<b>Packaging (mm)</b>	1660.0 x 1045.0 x 220.0
<b>Physical (mm)</b>	1485.7 x 934.6 x 118.0
<b>VESA Compatible</b>	600 x 400 mm

<b>NFC</b>	Yes
<b>Warranty</b>	3-year limited warranty on parts, labor and backlight, onsite warranty
<b>Recycle/Disposal</b>	Please dispose of in accordance with local, state or federal laws.
<b>Package Contents</b>	IFP6553, Power Cord (3m), USB-C Cable, Remote control, USB Touch Cable (3m), Stylus x 2, Quick Start Guide + Compliance statement, RS232 adapter, Clamp x 5, Camera Plate, Screw x 8 (camera 2+2, wall mount 4), HDMI cable 3m, VB-WIFI-005 WiFi Adapter
<b>Regulations</b>	CTUVus, FCC, Energy 8.0, EPEAT, CEC
<b>Ethernet LAN</b>	(10/100/1000M) (USB Type-C & Android 10/100, PC 10/100/1000)
<b>Wifi</b>	VB-WIFI-005 WiFi Adapter
<b>Bluetooth</b>	Bluetooth 5.2
<b>Display Type</b>	TFT LCD module
<b>Screen Size</b>	65"
<b>Light Source</b>	DLED
<b>Display Resolution</b>	3840 x 2160
<b>Refresh Rate</b>	60Hz
<b>Panel Type</b>	ADS
<b>Aspect Ratio</b>	16:9
<b>Static Contrast Ratio</b>	5,000:1
<b>Dynamic Contrast Ratio</b>	5,000:1
<b>Backlight Life (Hours)</b>	50,000
<b>Brightness</b>	450 cd/m2
<b>Response Time (Typical GTG)</b>	6.5ms
<b>Viewing Angles</b>	178° horizontal, 178° vertical
<b>Panel Surface</b>	Glass Anti-Glare + Anti-Fingerprint (7H Mohs; 9H pencil hardness)

UPC: 766907033083



### Contact Sales

[ViewSonic.com](http://ViewSonic.com)

888.881.8781

email:

[salesinfo@viewsonic.com](mailto:salesinfo@viewsonic.com)