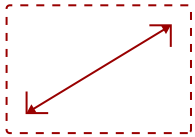


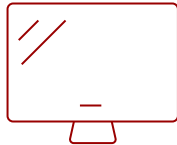


VG3456C - 34" UWQHD ERGONOMIC 21:9 CURVED DOCKING MONITOR WITH 100W USB C AND RJ45

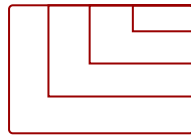
Key Features



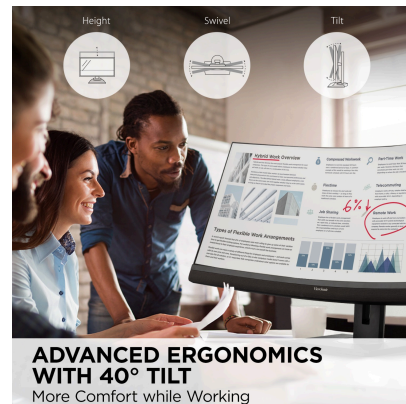
34"
DISPLAY



MVA
PANEL



3440 x 1440
RESOLUTION



Product Description

Featuring an immersive ultra-wide 34" curved screen and single-cable USB-C connectivity, the ViewSonic® VG3456C monitor is designed to boost productivity and streamline your workspace. With WQHD 3440 x 1440 resolution, the VG3456C delivers 2.4 times more pixels than standard Full HD monitors, giving you more detail for enhanced productivity. A 21:9 aspect ratio provides extra screen real estate so you can display more content. A 1500R curved screen creates a more immersive viewing experience by bringing the far edges of the monitor closer and within your natural field of view. Enjoy reliable network connectivity with the integrated Ethernet port while the latest USB Type-C connectivity provides up to 100W power delivery to your laptop. That's not all, the integrated USB hub also provides single-cable simplicity for connecting and charging your peripherals and accessories.

Specifications

| | More Information |
|------------------------------------|--|
| UPC | 766907028003 |
| Screen Size | 34" |
| Viewable Area (in.) | 34 |
| Panel Type | MVA |
| Display Resolution | 3440 x 1440 |
| Display Resolution | UWQHD (3440x1440) |
| Static Contrast Ratio | 3,000:1 |
| Dynamic Contrast Ratio | 80,000,000:1 |
| Light Source | LED |
| Brightness | 400 cd/m2 |
| Colors | 16.7M |
| Color Space Support | 8 bit (6 bit + FRC) |
| Aspect Ratio | 21:9 |
| Response Time (Typical GTG) | 5ms |
| Viewing Angles | 178° horizontal, 178° vertical |
| Backlight Life (Hours) | 30,000 |
| Panel Surface | Anti-Glare type, Hard-coating (3H), Haze 25% |
| Curvature | 1500R |
| Refresh Rate | 100Hz |
| PC Resolution (max) | 3440 x 1440 |
| Mac® Resolution (max) | 3440 x 1440 |
| USB Type A | 4 |
| USB Type B | 1 |
| USB Type C | 98W x 1 |
| 3.5mm Audio Out | 1 |
| Ethernet LAN (RJ45) | 1 |
| HDMI 2.0 In | 2 |
| DisplayPort | 1 |
| Internal Speakers | 5W (x2) |
| Eco Mode (Conserve) | 40.4W |
| Eco Mode (optimized) | 43.3W |
| Consumption (typical) | 46.7W |
| Consumption (max) | 176.7W |

| | |
|-------------------------------------|--|
| Voltage | AC 100-240V (universal), 50-60Hz |
| Stand-by | 0.3W |
| Power Supply | Internal |
| Cable Organization | No |
| Kensington Lock Slot | 1 |
| Physical Controls | Key 1 (eye), Key 2, Key 3, Key 4, Key 5, Key 6 (power) |
| On Screen Display | Input Select, Audio Adjust, ViewMode, Color Adjust, Manual Image Adjust, Setup Menu |
| Temperature | 32-104° F (0 - 40° C) |
| Humidity (non-condensing) | 20-90% |
| VESA Compatible | 100 x 100 mm |
| Frequency Horizontal | HDMI 2.0, DisplayPort, USB Type C: 15 ~ 155 KHz |
| Frequency Vertical | HDMI 2.0, DisplayPort, USB Type C: 50 ~ 100 Hz |
| Height Adjust | 110 mm / 4.3 in |
| Swivel | 120° |
| Tilt (Forward/Back) | 5° / 40° |
| Regulations | cTUVus, FCC-B, ICES003, Energy Star 8.0, EPEAT Silver, CEC, NOM, Mexico Energy |
| Net (lbs) | 20.1 |
| Net Without Stand (lbs) | 14.8 |
| Gross (lbs) | 32.4 |
| Net (kg) | 9.1 |
| Net Without Stand (kg) | 6.7 |
| Gross (kg) | 14.7 |
| Packaging (in.) | 36.2 x 19.0 x 11.0 |
| Physical (in.) | 31.8 x 16.67~21.0 x 8.6 |
| Physical Without Stand (in.) | 31.8 x 15.3 x 4.6 |
| Packaging (mm) | 920.0 x 482.0 x 280.0 |
| Physical (mm) | 807.0 x 423.4~533.4 x 217.0 |
| Physical Without Stand (mm) | 807.0 x 388.0 x 116.0 |
| Package Contents | VG3456C Display, Power Cable, HDMI Cable, USB Type C cable, USB A/B Cable, Quick Start Guide |
| Recycle/Disposal | Please dispose of in accordance with local, state or federal laws. |
| Warranty | *Refurbished. 30-day DOA policy for full refund, with a 90-day repair warranty on parts and labor. |

UPC: 766907028003



LESS CLUTTER. MORE EFFICIENCY
One Cable Solution and Docking Station



**IMMERSIVE CURVED
SCREEN DESIGN**

Contact Sales
ViewSonic.com
888.881.8781
email:
salesinfo@viewsonic.com