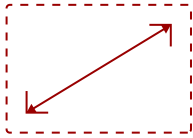
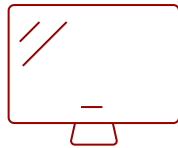


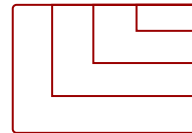
## 138" ALL-IN-ONE DIRECT VIEW LED DISPLAY | LDS138-151

## Key Features

- Easy Setup in Just Minutes
- Mounted on Motorized Stand and Packed in Custom Flight Case For Easy Transport
- Durable and Reliable Design
- User-Friendly Integrated Control Bar
- Hot-Swappable LED Modules

138  
DISPLAY

PANEL

1920x1080  
RESOLUTION

## Product Description

**Unfold New Possibilities. Anywhere.**

### ViewSonic® Mobile All-in-One dvLED Displays

Ready for a big screen without the big hassle? The ViewSonic® LDS138-151 is a foldable 138" Direct View LED video wall on wheels designed for maximum flexibility. It sets up in minutes and comes in a durable flight case for easy transport and storage. Thanks to a motorized stand and an updated hinge design with improved durability, it's ready for any event, trade show, or pop-up space. Just roll it in, plug it in, and wow your audience.

## Specifications

### More Information

<b>UPC</b>	766907031386
<b>OS</b>	Android 9.0
<b>GPU</b>	ARM Mali-T860MP4
<b>CPU</b>	RK3399
<b>Memory</b>	4GB DDR4
<b>Storage</b>	Total 32GB (26GB available storage)
<b>Internal Speakers</b>	30W x 2
<b>PC Resolution (max)</b>	1920x1080

<b>Mac® Resolution (max)</b>	1920x1080
<b>HDMI 2.0 (with HDCP 2.2)</b>	4
<b>HDMI 1.4 Out (with HDCP 1.4)</b>	1
<b>3.5mm Audio Out</b>	2
<b>SPDIF</b>	1
<b>USB 3.0</b>	1
<b>USB 2.0</b>	2
<b>USB Type C</b>	1 (data only)
<b>RS232</b>	1
<b>Ethernet LAN (RJ45)</b>	2
<b>IR in</b>	1
<b>Voltage</b>	100-120V+/- 10%, 50/60Hz, 20A
<b>Consumption (max)</b>	1,745W
<b>Consumption (typical)</b>	581W
<b>Stand-by</b>	<0.5W
<b>On Screen Display</b>	Yes
<b>Remote Control</b>	Yes
<b>Temperature</b>	32-104° F (0 - 40° C)
<b>Humidity (non-condensing)</b>	20-80%
<b>Net (lbs)</b>	511
<b>Gross (lbs)</b>	919
<b>Net (kg)</b>	250
<b>Gross (kg)</b>	417
<b>Packaging (in.)</b>	81.5x78.6x33.4 inches
<b>Physical (in.)</b>	62.2x76.7x30.7in(min)   120.6x102.3x30.7in(max)
<b>Packaging (mm)</b>	2070x1996x847 mm
<b>Physical (mm)</b>	1850.81x1948.4x780mm(min.)   3064x2598x780 mm(max.)
<b>Warranty</b>	3-year limited warranty on parts and labor, on-site service
<b>Recycle/Disposal</b>	Please dispose of in accordance with local, state or federal laws.
<b>Package Contents</b>	Power Cord, Remote Control, QSG, LD-MK-004 x 1, LD-MK-006 x 1, LAN Cable (Cat 5E) x 1, IR Extender Cable x 1
<b>Regulations</b>	cTUVus, FCC, RoHS
<b>Wifi</b>	2.4G/5G Hz
<b>Display Type</b>	Direct View LED
<b>Screen Size</b>	138
<b>Viewable Area (in.)</b>	138


<b>Orientation</b>	Landscape
<b>Light Source</b>	Fine Pixel Pitch LED
<b>LED Pitch Size (mm)</b>	1.588
<b>LED Grayscale</b>	13 bits
<b>Display Resolution</b>	1920 x 1080
<b>Refresh Rate</b>	3,840Hz
<b>Aspect Ratio</b>	16:9
<b>Static Contrast Ratio</b>	6,500:1
<b>Backlight Life (Hours)</b>	100,000
<b>Brightness</b>	600 nits (100 levels adjustable)
<b>Viewing Angles</b>	170° horizontal, 170° vertical

UPC: 766907031386



### Contact Sales

[ViewSonic.com](http://ViewSonic.com)

888.881.8781 

email: [salesinfo@viewsonic.com](mailto:salesinfo@viewsonic.com) 