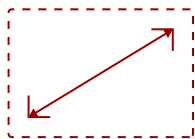


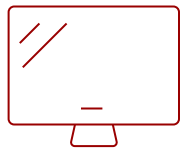
VIEWSONIC 5,500 ANSI LUMENS 4K UHD HDR LASER PROJECTOR WITH HDR AND HGL SUPPORT | LS901-4K

Key Features

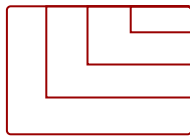
- 4K Home Theater Laser Projector: UHD (3840x2160p) 4K resolution with a 1.2-2.0 throw ratio and 5,500 ANSI lumens perfect for home entertainment
- Designed for Fast Paced Action: Experience gaming on the big screen with 4.2ms low input lag and a 240Hz refresh rate for smooth, high-action gaming
- Vibrant Colors & HDR Support: SuperColor technology and HDR/HGL compatibility deliver a wide color gamut with enhanced contrast and visual depth.
- Golf Mode for Realistic Simulation: Designed for immersive play, Golf Mode supports major golf simulators for lifelike play on world-class virtual courses
- Easy Setup & Image Adjustment: Features 1.7x optical zoom, 0.8x-2.0x digital zoom, H/V keystone, 360-degree projection, curved screen projection, and 4-corner adjustment
- Large Screen Projection: Projects screen sizes from 80" to 150" with a throw distance of 7 ft - 13.1 ft; displays a 100" image from 8.7 ft
- Installation Options: This projector is ceiling mountable; compatible with ViewSonic mount PJ-WMK-007



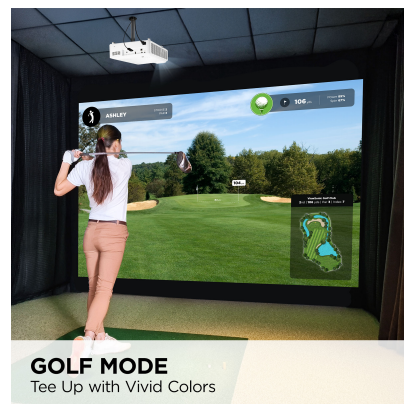
30 - 300 in. / 0.76 - 7.62 m
DISPLAY



PANEL



3840 x 2160
RESOLUTION



Product Description

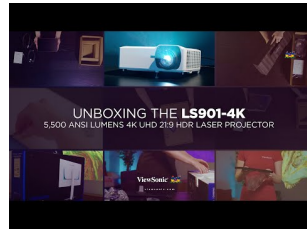
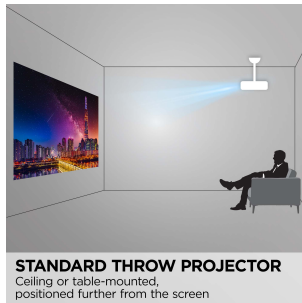
Bring the movie theater home with the ViewSonic® LS901-4K laser projector. Experience stunning 4K detail and vibrant colors that make your favorite films and shows come alive, even in big rooms. Enjoy a truly cinematic experience with HDR/HLG support. Set it up anywhere thanks to flexible installation options like optical zoom, vertical lens shift, and 360° projection - you'll get a perfect picture every time. Plus, the long-lasting laser light source means you can enjoy brilliant entertainment for years.

Specifications

UPC	766907027624
Light Source	DLP Laser
Display Resolution	4K (3840x2160)
Display Resolution	3840 x 2160
Brightness (Lumens)	5,500 ANSI
Screen Size	30 - 300 in. / 0.76 - 7.62 m
Throw Distance	1m-10.96m (100" ^m @3.32m)
Throw Ratio	1.2-2.04
Keystone	Vertical ($\pm 30^\circ$) / Horizontal ($\pm 30^\circ$)
Light Source (watt)	Laser
Light Source Life, Normal (hours)	20000
Light Source Life, Dynamic Eco-Mode (hours)	30000
Color Depth	1.07 Billion Colors
Dynamic Contrast Ratio	3,000,000:1
Aspect Ratio	16:9
Lens Shift	V: 0%, -21%
Frequency Horizontal	15K-255KHz
Frequency Vertical	23-240Hz
PC Resolution (max)	3840 x 2160
PC Resolution (min)	640 x 480
Mac® Resolution (max)	3840 x 2160
Mac® Resolution (min)	640 x 480
USB 2.0 Type A	1
Ethernet LAN (RJ45)	1
3.5mm Audio Out	1
Control (RS-232)	1
HDMI 2.0 (with HDCP 2.2)	2
Internal Speakers	15W (x2)
Voltage	100-240V+/- 10%, 50/60Hz AC
Consumption (typical)	245W
Stand-by	<0.5W
Physical Controls	Keypad, Power key
On Screen Display	Display, Image, Power Management, Basic, Advanced, System, Information (See user guide for full OSD functionality)
Temperature	32-104° F (0 - 40° C)
Kensington Lock Slot	1

Net (lbs)	10.69
Gross (lbs)	15.0
Net (kg)	4.85
Gross (kg)	6.8
Packaging (in.)	19.5 x 15.2 x 7.7
Physical (in.)	13.3 x 11.0 x 5.2
Packaging (mm)	496.0 x 387.0 x 195.0
Physical (mm)	337.0 x 280.0 x 132.0
Regulations	cTUVus
Package Contents	LS901-4K, power cable, remote control, Quick Start Guide
Warranty	Three-year limited warranty on parts and labor, 1st year free Express Exchange® service. (One year Express Exchange Service requires product registration).
Recycle/Disposal	Please dispose of in accordance with local, state or federal laws.

UPC: 766907027624



Contact Sales
[ViewSonic.com](https://www.viewsonic.com)

888.881.8781
email:
salesinfo@viewsonic.com