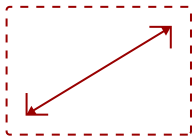


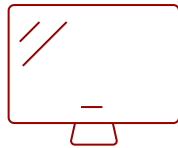
IFP7532

Key Features

- 20-point Multi-touch Interactive Screen
 - Built-in Stereo Speaker
 - myViewBoard Manager
 - myViewBoard™ Digital Whiteboarding Solution
 - ViewBoard Cast
-



75
DISPLAY



PANEL



RESOLUTION



Product Description

The ViewSonic® ViewBoard® IFP7532 is a 75" interactive flat panel display with digital whiteboard technologies for immersive learning in any classroom environment. With a high-accuracy touchscreen, the IFP7532 delivers an intuitive digital whiteboard experience for everyone from the youngest of students to the most experienced teachers. Featuring 4K Ultra HD resolution and a powerful 10W stereo speaker, this ViewBoard display delivers optimal images and sound for everyone in the classroom as well those learning remotely. With the integrated myViewBoard™ software ecosystem, this ViewBoard display enables teachers to access legacy files from the cloud, as well as build new interactive lessons. IT directors will be confident managing files from a secure cloud network, while curriculum directors will be pleased knowing that this software easily integrates with online resources.

Specifications

	More Information
UPC	766907010398
OS	ViewBoard OS based on Android 9.0
GPU	ARM Mali-G31
CPU	Amlogic T972 quad-core Cortex-A55, 12nm
Memory	4GB DDR4
Storage	32GB eMMC
Internal Speakers	10W (x2)
HDMI 2.0 In	2
VGA	1

3.5mm Audio In	1
3.5mm Audio Out	1
USB 2.0	4
USB 2.0 Type B	1
OPS PC Slot	1
RS232	1
WIFI Module Slot	1
Voltage	164-264V
Consumption (typical)	238W
Stand-by	<0.5W
Temperature	32-104° F (0 - 40° C)
Humidity (non-condensing)	10-90%
Touch Technology	Infrared
Touch Points	Windows: 20, Android: 20
Tip Detection	Dual tips, 3mm and 9mm
Net (lbs)	114.2
Gross (lbs)	144.8
Net (kg)	51.8
Gross (kg)	65.7
Packaging (in.)	73 x 11 x 44.9
Physical (in.)	67.3 x 40.2 x 3.4
Packaging (mm)	1860 x 280 x 1140
Physical (mm)	1710 x 1020 x 87
VESA Compatible	800 x 400 mm
Screw Size	M8
Ethernet LAN	(10/100/1000M) (Android & PC)
Wifi	Optional VB-WIFI-002 adapter, 802.11AC + Bluetooth 5.0
Screen Size	75
Viewable Area (in.)	74.5
Light Source	LED
Display Resolution	3840 x 2160
Refresh Rate	60Hz
Aspect Ratio	16:9
Dynamic Contrast Ratio	4,000:1
Backlight Life (Hours)	30,000
Brightness	350 cd/m2

Response Time (Typical GTG)

6.5ms

Viewing Angles

178° horizontal, 178° vertical

Panel Surface


Anti-Glare type, Hard-coating (3H), Haze 25%

UPC: 766907010398



Contact Sales

ViewSonic.com

888.881.8781 

email: salesinfo@viewsonic.com 