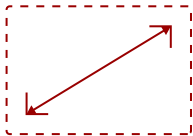


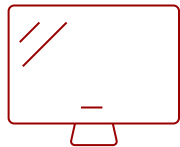
VIEWSONIC 6,000 LUMENS WUXGA SHORT THROW LASER PROJECTOR W PORTRAIT MODE AND DUAL HDMI | LS921WU

Key Features

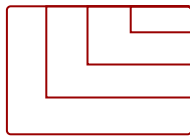
- Short Throw Laser Projector: WUXGA (1920x1200p) resolution with a 0.8 throw ratio and 6,000 ANSI lumens for bright, detailed images in compact spaces
- Vibrant Colors & HDR Support: SuperColor technology and HDR/HGL compatibility deliver a wide color gamut with enhanced contrast and visual depth
- Golf Mode for Realistic Simulation: Designed for immersive play, Golf Mode supports major golf simulators for lifelike play on world-class virtual courses
- Designed for Fast Paced Content: A low 16ms input latency and 120Hz refresh rate provides faster frame-by-frame action for smooth images with minimal delay
- Large Screen Projection: Projects screen sizes from 30" to 200" with a throw distance of 3.4 ft - 11.5 ft; displays a 100" image from 5.7 ft
- Easy Setup & Image Adjustment: 1.1x optical zoom, 0.8x-2.0x digital zoom, H/V keystone, 360-degree projection, portrait mode, and 4-corner adjustment
- Advanced LAN Control: Remotely schedule and manage the projector via Crestron, AMX, Extron, PJ Link, ATEN, and ViewSonic vController
- Installation Options: This projector is ceiling mountable; compatible with ViewSonic mount PJ-WMK-007



30 - 300 in. / 0.76 - 7.62 m
DISPLAY



PANEL



3840 x 2160
RESOLUTION



**INSTALLATION FLEXIBILITY
WITH WIDE H/V LENS SHIFT**

Product Description

Bright and versatile for any professional installation, the ViewSonic® LS921WU WUXGA short throw laser projector delivers everything you need for big screens in big venues. Delivering 6,000 ANSI lumens of advanced high brightness, up to 20,000 hours* of light source life, and a screen size of up to 200", this projector is ideal for auditoriums, restaurants, gyms and other large venues. This top-notch performer is also easy to deploy and manage with its short-throw lens, 1.1x optical zoom adjustment, wide lens shift, 360° projection, and portrait mode that provide extreme flexibility in even the most challenging installations. Dual HDMI 2.0b / HDCP 2.2 ports ensure access to original 4K quality content with HDR/HLG support. In addition, its compact size and built-in HDBaseT deliver the perfect mix of high-quality projection and cost-effectiveness. *Light source life may vary based on actual usage and other factors.

Specifications

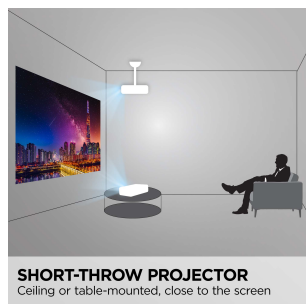
	More Information
UPC	766907008739
Light Source	Laser
Display Resolution	WUXGA (1920x1200)
Display Resolution	1920 x 1200
Brightness (Lumens)	6,000 ANSI
Screen Size	30 - 300 in. / 0.76 - 7.62 m
Throw Distance	1.04-3.83m (100"@1.74m)
Throw Ratio	0.81-0.89
Keystone	Vertical (+/- 40°) / Horizontal (+/- 40°)
Lens	1.1x optical zoom
Light Source (watt)	Nichia 74W x 2
Light Source Life, Normal (hours)	20000
Color Depth	1.07 Billion Colors
Dynamic Contrast Ratio	3,000,000:1
Aspect Ratio	16:10
Input Lag	37ms
Lens Shift	Horizontal (50%, -50%) / Vertical (+23%, -23%)
Frequency Horizontal	15K~135KHz
Frequency Vertical	23-120Hz
PC Resolution (max)	3840 x 2160
PC Resolution (min)	640 x 480
Mac® Resolution (max)	3840 x 2160
Mac® Resolution (min)	640 x 480
USB 2.0 Type A	1
Ethernet LAN (RJ45)	1
3.5mm 12V Trigger	1
3.5mm Audio Out	1
3.5mm Audio In	1
Control (RS232)	1
HDMI 2.0 (with HDCP 2.2)	2
VGA In	1
VGA Out	1
Composite RCA Video In	1

RCA Audio In (L/R)	1
3D VESA	1
HDBT	1
Internal Speakers	10W (x2)
Voltage	100-120V+/- 10%, 50/60Hz
Consumption (typical)	450W
Stand-by	<0.5W
Physical Controls	Keypad, Power key
On Screen Display	Display, Image, Power Management, Basic, Advanced, System, Information (See user guide for full OSD functionality)
Temperature	32-104° F (0 - 40° C)
Kensington Lock Slot	1
Net (lbs)	14.3
Gross (lbs)	19.8
Net (kg)	6.5
Gross (kg)	9.0
Packaging (in.)	20.3 x 19.3 x 10.9
Physical (in.)	15.9 x 12.0 x 5.7
Packaging (mm)	515.0 x 490.0 x 276.0
Physical (mm)	405.0 x 305.0 x 145.0
Regulations	cTUVus
Package Contents	LS921WU projector, power cable, remote control, Quick Start Guide
Warranty	Five-year limited warranty on parts and labor, 1-year limited warranty on the light source, 1st year free Express Exchange® service. (One year Express Exchange Service requires product registration).
Recycle/Disposal	Please dispose of in accordance with local, state or federal laws.

UPC: 766907008739



**6,000 LUMENS
AND WUXGA RESOLUTION**



SHORT-THROW PROJECTOR
Ceiling or table-mounted, close to the screen



**SHORT LENS NO SHADOWS
NO BLINDING LIGHTS**

Contact Sales
ViewSonic.com

888.881.8781
email:
salesinfo@viewsonic.com