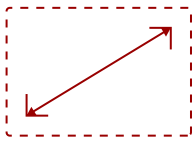


## VA2415-H - 24" DISPLAY, MVA PANEL, 1920 X 1080 RESOLUTION

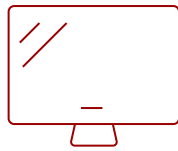
## Key Features

---

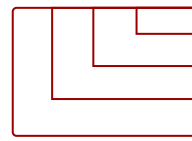
- Frameless Design
  - HDMI Cable in Every Box
  - Incredible Screen Performance
  - Adaptive Sync
- 



24"  
**DISPLAY**



MVA  
**PANEL**



1920x1080  
**RESOLUTION**



## Product Description

---

With flexible connectivity, wide-angle viewing, and amazing screen performance, the ViewSonic® VA2415-H-2 delivers solid multimedia features and a sleek design at a great value. Featuring frameless MVA panel technology, the VA2415-H-2 delivers stunning brightness and contrast at nearly any viewing angle. A minimalistic design, edge-to-edge screen, and frameless bezel make this an ideal monitor for nearly seamless multi-screen setups. Whether for working at the office, or enjoying entertainment at home, the VA2415-H-2 features an HDMI port and an included HDMI cable for flexible connectivity to PCs, laptops and gaming consoles. A three-year limited warranty, along with one of the industry's best pixel performance policies, makes the VA2415-H-2 a great overall value choice.

## Specifications

---

### More Information

<b>UPC</b>	766907014174
<b>Screen Size</b>	24"
<b>Viewable Area (in.)</b>	23.8
<b>Panel Type</b>	MVA
<b>Display Resolution</b>	1920 x 1080
<b>Display Resolution</b>	Full HD (1920x1080)
<b>Static Contrast Ratio</b>	4,000:1
<b>Dynamic Contrast Ratio</b>	50,000,000:1
<b>Brightness</b>	250 cd/m <sup>2</sup>
<b>Colors</b>	16.7M

<b>Color Space Support</b>	8 bit true
<b>Aspect Ratio</b>	16:9
<b>Response Time (GTG w/OD)</b>	5ms
<b>Viewing Angles</b>	178° horizontal, 178° vertical
<b>Backlight Life (Hours)</b>	30,000
<b>Panel Surface</b>	Anti-glare, Hard coating (3H)
<b>Refresh Rate</b>	75Hz
<b>PC Resolution (max)</b>	1920x1080
<b>Mac® Resolution (max)</b>	1920x1080
<b>3.5mm Audio Out</b>	1
<b>VGA</b>	1
<b>HDMI 1.4 In</b>	1
<b>Eco Mode (Conserve)</b>	13W
<b>Eco Mode (optimized)</b>	16W
<b>Consumption (typical)</b>	20W
<b>Consumption (max)</b>	22W
<b>Voltage</b>	100-240 VAC, 50-60Hz
<b>Stand-by</b>	0.5W
<b>Power Supply</b>	External
<b>Cable Organization</b>	No
<b>Kensington Lock Slot</b>	1
<b>Physical Controls</b>	U, R, D, L, EN (power)
<b>On Screen Display</b>	Input Select, Audio Adjust, ViewMode, Color Adjust, Manual Image Adjust, Setup Menu
<b>Temperature</b>	32-104° F (0 - 40° C)
<b>Humidity (non-condensing)</b>	20-90%
<b>VESA Compatible</b>	75 x 75 mm
<b>Frequency Horizontal</b>	HDMI (v1.4): 24 ~ 86KHz
<b>Frequency Vertical</b>	HDMI (v1.4): 48 ~ 75Hz
<b>Tilt (Forward/Back)</b>	5° / 20°
<b>Regulations</b>	RoHS, WEEE
<b>Net (lbs)</b>	6.4
<b>Net Without Stand (lbs)</b>	5.5
<b>Gross (lbs)</b>	8.6
<b>Net (kg)</b>	2.9
<b>Net Without Stand (kg)</b>	2.5
<b>Gross (kg)</b>	3.9

<b>Packaging (in.)</b>	26.7 x 16.8 x 4.6
<b>Physical (in.)</b>	21.2 x 16.3 x 7.4
<b>Physical Without Stand (in.)</b>	21.2 x 12.5 x 1.6
<b>Packaging (mm)</b>	677.0 x 427.0 x 117.0
<b>Physical (mm)</b>	538.0 x 415.0 x 188.0
<b>Physical Without Stand (mm)</b>	538.0 x 318.0 x 41.0
<b>Package Contents</b>	VA2415-H x1, HDMI Cable (v1.4; Male-Male) x1, AC/DC Adapter x1, Quick Start Guide x1
<b>Recycle/Disposal</b>	Please dispose of in accordance with local, state or federal laws.
<b>Classification</b>	Discontinued

UPC: 766907014174



### Contact Sales

[ViewSonic.com](http://ViewSonic.com)

888.881.8781

email: [salesinfo@viewsonic.com](mailto:salesinfo@viewsonic.com)