

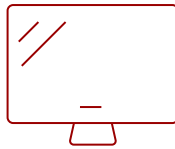
M1-2 - 854 X 480 RESOLUTION, 300 LED LUMENS, 1.2 THROW RATIO

## Key Features

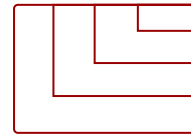
- 360° Projection with Smart Stand
- Dual Harman Kardon Speakers
- Cinema SuperColor+
- Advanced LED Light Source
- Hours of Entertainment
- Winner of the iF Design Award



24 - 100 in. / 0.6 - 2.54 m  
**DISPLAY**



**PANEL**



1920x1080  
**RESOLUTION**



## Product Description

The ViewSonic® M1 is iF Design award-winning, ultra-portable LED projector that delivers convenient entertainment in nearly any location. With a built-in battery and over 30,000 hours of operational life, this projector will deliver years of multimedia entertainment wherever it goes. Weighing less than two pounds, the M1's compact and lightweight design makes it ideal for moving from room to room, or for indoor/outdoor usage. An integrated smart stand provides for simple 360-degree setup, while also doubling as a lens cover. Once the lens is uncovered, the projector automatically powers on with full brightness for instant entertainment. Dual Harman Kardon speakers provide crisp and clear sound for multimedia content, while a short throw lens can display large images in small spaces.

## Specifications

### More Information

<b>UPC</b>	766907000658
<b>Light Source</b>	LED
<b>Display Resolution</b>	WVGA (854x480)
<b>Display Resolution</b>	854 x 480
<b>Brightness (Lumens)</b>	300 LED
<b>Screen Size</b>	24 - 100 in. / 0.6 - 2.54 m
<b>Throw Distance</b>	0.64m-2.66m (38"@1m)
<b>Throw Ratio</b>	1.2
<b>Keystone</b>	Vertical (+/- 40°)

<b>Lens</b>	Fixed Zoom
<b>Light Source (watt)</b>	RGB LED
<b>Light Source Life, Normal (hours)</b>	30000
<b>Light Source Life, Dynamic Eco-Mode (hours)</b>	30000
<b>Color Depth</b>	1.07B Color (R/G/B 10bit)
<b>Dynamic Contrast Ratio</b>	120,000:1
<b>Aspect Ratio</b>	16:9
<b>Input Lag</b>	37ms
<b>Frequency Horizontal</b>	15K-102KHz
<b>Frequency Vertical</b>	23-120Hz
<b>PC Resolution (max)</b>	1920x1080
<b>PC Resolution (min)</b>	640 x 480
<b>Mac® Resolution (max)</b>	1920x1080
<b>Mac® Resolution (min)</b>	640 x 480
<b>USB 2.0 Type A</b>	1
<b>USB 3.1 Type C</b>	1
<b>Card Reader</b>	Micro SD
<b>3.5mm Audio Out</b>	1
<b>HDMI 1.4 (with HDCP 1.4)</b>	1
<b>Internal Speakers</b>	3W (x2)
<b>Voltage</b>	Power adaptor: Input: 100~240V Output: 19VDC / 3.42A Battery: 12000mAh(4000mAh 3.7Vx3) (2.5hrs@Normal, 3hrs@Eco)
<b>Consumption (typical)</b>	35W
<b>Stand-by</b>	<0.5W
<b>Physical Controls</b>	Power, keystone/arrow keys, left/blank, menu/exit, right/panel key lock, mode/enter, auto, source
<b>On Screen Display</b>	Display, Image, Power Management, Basic, Advanced, System, Information (See user guide for full OSD functionality)
<b>Temperature</b>	32-104° F (0 - 40° C)
<b>Humidity (non-condensing)</b>	0-90%
<b>Net (lbs)</b>	1.5
<b>Gross (lbs)</b>	3.7
<b>Net (kg)</b>	0.7
<b>Gross (kg)</b>	1.7
<b>Packaging (in.)</b>	8.6 x 7.5 x 4.7
<b>Physical (in.)</b>	5.9 x 5.0 x 1.6
<b>Packaging (mm)</b>	219.0 x 190.0 x 119.0


<b>Physical (mm)</b>	151.0 x 126.0 x 40.0
<b>Regulations</b>	FCC, cTUVus, ROHS
<b>Package Contents</b>	M1-2 Projector, Power Cable, Remote Control, USB-C Cable, Quick Start Guide
<b>Warranty</b>	*Final Sale. Sold AS-IS with no warranty on parts or labor. 30-day DOA policy for full refund.
<b>Recycle/Disposal</b>	Please dispose of in accordance with local, state or federal laws.
<b>Battery Chemistry</b>	Lithium-ion
<b>Portability</b>	Portable

UPC: 766907000658



### Contact Sales

[ViewSonic.com](http://ViewSonic.com)

888.881.8781 

email: [salesinfo@viewsonic.com](mailto:salesinfo@viewsonic.com) 