

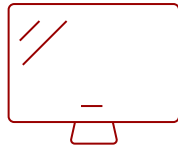
## VA2418-SH - 24" DISPLAY, IPS PANEL, 1920 X 1080 RESOLUTION

## Key Features

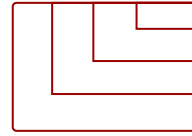
- Slim Bezel Design
- Ultra-Wide Viewing Angles
- Full HD 1080p Resolution
- Versatile Connectivity
- FreeSync



24  
DISPLAY



IPS  
PANEL



1920x1080@75Hz  
RESOLUTION



## Product Description

With flexible connectivity, wide-angle viewing, and amazing screen performance, the ViewSonic® VA2418-sh delivers a solid feature set and sleek design, all at a great value. Featuring SuperClear® IPS panel technology, the VA2418-sh delivers stunning brightness and contrast at nearly any viewing angle. A thin bezel makes this an ideal monitor for nearly seamless multi-screen setups. Whether for working at the office, or at home, the VA2418-sh features an HDMI port for flexible connectivity to PCs, laptops, gaming consoles, and other multimedia devices. In addition, a 3-year limited warranty solidifies the VA2418-sh as a great value choice.

## Specifications

### More Information

<b>UPC</b>	766907007152
<b>Screen Size</b>	24
<b>Viewable Area (in.)</b>	23.8
<b>Panel Type</b>	IPS
<b>Display Resolution</b>	1920 x 1080
<b>Display Resolution</b>	Full HD (1920x1080)
<b>Static Contrast Ratio</b>	1,000:1
<b>Dynamic Contrast Ratio</b>	50,000,000:1
<b>Light Source</b>	LED
<b>Brightness</b>	250 cd/m2

<b>Colors</b>	16.7M
<b>Aspect Ratio</b>	16:9
<b>Response Time (Typical GTG)</b>	5ms
<b>Viewing Angles</b>	178° horizontal, 178° vertical
<b>Panel Surface</b>	Anti-glare
<b>PC Resolution (max)</b>	1920x1080@75Hz
<b>Mac® Resolution (max)</b>	1920x1080@75Hz
<b>3.5mm Audio Out</b>	1
<b>HDMI In</b>	1
<b>VGA</b>	1
<b>Eco Mode (Conserve)</b>	19W
<b>Eco Mode (optimized)</b>	22W
<b>Consumption (typical)</b>	26W
<b>Consumption (max)</b>	27W
<b>Voltage</b>	100-240 VAC, 50-60Hz
<b>Stand-by</b>	0.3W
<b>Power Supply</b>	Internal
<b>Cable Organization</b>	No
<b>Kensington Lock Slot</b>	1
<b>Physical Controls</b>	1, 2, Up, Down, Power
<b>On Screen Display</b>	Auto Image Adjust, Contrast/Brightness, Input Select, Audio Adjust, Color Adjust, Information, Manual Image Adjust, Setup Menu, Memory Recall
<b>Temperature</b>	32-104° F (0 - 40° C)
<b>Humidity (non-condensing)</b>	20-90%
<b>Frequency Horizontal</b>	48 ~ 75 Hz
<b>Frequency Vertical</b>	48 ~ 75 Hz
<b>Regulations</b>	cTUVus FCC-B, ICES003, CEC, MX-CoC, Mexico Energy
<b>Net (lbs)</b>	7.5
<b>Net Without Stand (lbs)</b>	6.6
<b>Gross (lbs)</b>	9.7
<b>Net (kg)</b>	3.4
<b>Net Without Stand (kg)</b>	3.0
<b>Gross (kg)</b>	4.4
<b>Packaging (in.)</b>	24.2 x 15.7 x 4.7
<b>Physical (in.)</b>	21.6 x 15.9 x 8.6
<b>Physical Without Stand (in.)</b>	21.6 x 12.7 x 1.5


<b>Packaging (mm)</b>	615.0 x 398.0 x 119.0
<b>Physical (mm)</b>	548.0 x 404.0 x 218.0
<b>Physical Without Stand (mm)</b>	548.0 x 322.0 x 38.0
<b>Package Contents</b>	VA2418-SH x1, 3-pin Mickey Mouse Plug (IEC C5) x1, VGA Cable (Male-Male) x1, Quick Start Guide x1
<b>Recycle/Disposal</b>	Please dispose of in accordance with local, state or federal laws.

UPC: 766907007152



## Contact Sales

[ViewSonic.com](http://ViewSonic.com)

888.881.8781 

email: [salesinfo@viewsonic.com](mailto:salesinfo@viewsonic.com) 