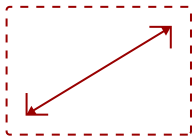


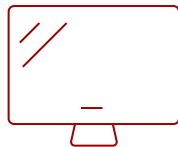
CDE3205

Key Features

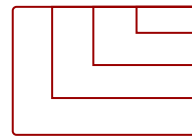
- Integrated USB Multimedia Player
- Hospitality Mode
- Control Multiple Devices
- Reliable 16/7 Operation
- Free Bundled VController™ Software



32
DISPLAY



IPS
PANEL



1920x1080
RESOLUTION



Product Description

The ViewSonic® CDE3205 is a great value, high performance 32" (31.5" viewable) Full HD LED commercial display for hotel, restaurant and hospitality environments. In addition to versatile connectivity options, including HDMI, DVI, VGA, DVI and YPbPr, the display comes with simple and convenient USB multimedia playback functionality. With 1920 x 1080 resolution, 350-nit brightness, wide viewing angles and dual 10W stereo speakers, the slim-bezel CDE3205 delivers vivid images and remarkable sound for superior multimedia performance. The HDMI-CEC pass-through support provides one-touch-play, with additional features for multiple connected devices such as HD set-top-boxes, media players, and Blu-ray™ players. An RS232 port with IR pass-through provides automated control for hospitality installation. For a more comfortable viewing experience, the display is equipped with Flicker-Free and Blue Light Filter technologies. In addition, free-bundled vController software offers easy maintenance and intuitive interfaces for remote management via a PC server or laptop. **Optional stand (STND-048) sold separately..**

Specifications

More Information

UPC	766907005288
Media Player Type	Yes
Internal Speakers	10W (x2)
PC Resolution (max)	1920x1080
Mac® Resolution (max)	1920x1080
HDMI 1.4 In	1
DVI-D	1
VGA	1

YPbPr	1
Composite RCA	1
3.5mm Audio In	1
USB 2.0	1
RS232	1
RS232 Out	1
Ethernet LAN (RJ45)	1
IR in	1
IR out	1
Voltage	AC 100-240V (universal), 50-60Hz
Consumption (max)	81W
Consumption (typical)	57W
Stand-by	<0.5W
Power Supply	Internal
Physical Controls	POWER, MUTE, INPUT, VOL -/+, UP, DOWN, MENU
On Screen Display	Picture style, Restore style, Backlight, Contrast, Brightness, Hue, Colour, Sharpness, Advanced, Video or PC, Format and edges, Sound style, Restore style, Bass, Treble, Audio out, Advanced Menu Language, Monitor id, Eco mode, Auto search, Clock, Scheduli
Temperature	41-104° F (5 - 40° C)
Humidity (non-condensing)	20-80%
Net (lbs)	14.7
Net Without Stand (lbs)	11.5
Gross (lbs)	17.2
Net (kg)	6.7
Net Without Stand (kg)	5.2
Gross (kg)	7.8
Packaging (in.)	32.2 x 21.5 x 5.5
Physical (in.)	28.6 x 18.2 x 9.4
Physical Without Stand (in.)	28.6 x 16.8 x 2.5
Packaging (mm)	818.0 x 547.0 x 139.0
Physical (mm)	727.0 x 463.0 x 240.0
Physical Without Stand (mm)	727.0 x 425.0 x 64.0
VESA Compatible	100 x 100 / 200 x 200
Screw Size	M4
Screw Length (mm)	8
Kensington Lock Slot	1
Recycle/Disposal	Please dispose of in accordance with local, state or federal laws.

Package Contents	CDE3205, Remote Control with batteries, User manual CD wizard, Quick Start Guide, Power Cables, VGA cable, RS232 cable, RS232 daisy chain cable (2.4mm – 2.4mm), IR sensor cable
Regulations	cTUVus, FCC, Energy Star 7.0, Mexico Energy, CE, CB, ErP, EEL, WEEE
Classification	Discontinued
Screen Size	32
Viewable Area (in.)	31.5
Light Source	WLED
Display Resolution	1920 x 1080
Panel Type	IPS
Aspect Ratio	16:9
Static Contrast Ratio	1,200:1
Backlight Life (Hours)	30,000
Brightness	350 cd/m2
Response Time (Typical GTG)	8ms
Viewing Angles	178° horizontal, 178° vertical
Panel Surface	Anti-glare, Hard coating (3H)
Operation Rating	16/7

UPC: 766907005288



Contact Sales

ViewSonic.com

888.881.8781

email: salesinfo@viewsonic.com