

CDE8620-W - 86" DISPLAY, 3840 X 2160 RESOLUTION, 450 CD/M2 BRIGHTNESS

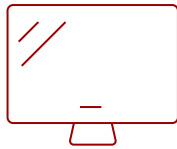
## Key Features

---

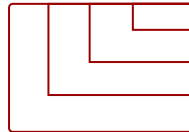
- Ultra HD Resolution
- Powerful All-in-One SoC Platform
- Free ViewBoard® Cast Content Sharing Software
- Integrated Content Management System
- AV Control System Certified



86"  
DISPLAY



IPS  
PANEL



RESOLUTION



## Product Description

---

The ViewSonic® CDE8620-W is a 86" premium 4K large format presentation display. With features including a razor-sharp resolution of 3840 x 2160, 450-nit high brightness, 178-degree ultra-wide viewing angles, 2 x 16W speakers, and wireless screen sharing, the CDE8620-W transforms meeting rooms into a dynamic communications hub. The built-in ViewBoard® screen sharing software\*, ViewBoard® Cast (along with the optional ViewSonic® vCastSender app), enables both on-site and online users to participate in conferences and simultaneously share content. Equipped with twin dual-core processors, 3GB RAM, and 16GB of internal memory, the CDE8620-W can play multimedia from internal storage or a USB flash drive. And with remote configuration and content management system support, the ViewSonic® CDE8620-W is also suitable for a wide array of diverse signage applications.

\*Chrome, Android, Windows, Mac OS, and iOS compliant

# Specifications

|   | More Information                                |
|---|---|
| <b>UPC</b>                              | 766907004205                                    |
| <b>Media Player Type</b>                | Yes   |
| <b>GPU</b>                              | Dual-core MaliG51 MP2                           |
| <b>CPU</b>                              | 2 Dual-core Processors - Cortex A73 + A53       |
| <b>CPU Processor Speed</b>              | 1.4GHz  |
| <b>Memory</b>                           | 3GB DDR4  |
| <b>Storage</b>                          | 16GB eMMC                                       |
| <b>Internal Speakers</b>                | 16W (x2)  |
| <b>HDMI 2.0 In (With CEC, HDCP 2.2)</b> | 2   |
| <b>VGA</b>                              | 1   |
| <b>DisplayPort</b>                      | 1   |
| <b>RCA Audio Out</b>                    | 1   |
| <b>SPDIF Audio Out</b>                  | 1   |
| <b>USB 3.0</b>                          | 1   |
| <b>USB 2.0</b>                          | 2   |
| <b>Slot-in PC Slot</b>                  | 1   |
| <b>RS232</b>                            | 1   |
| <b>Ethernet LAN (RJ45)</b>              | 1   |
| <b>WIFI Module Slot</b>                 | 1   |
| <b>Voltage</b>                          | 100-240 VAC +/- 10% Wide Range, 50-60Hz +/-3 Hz |
| <b>Consumption (max)</b>                | 450W  |
| <b>Consumption (typical)</b>            | 365W  |
| <b>Stand-by</b>                         | <0.5W   |
| <b>Temperature</b>                      | 32-104° F (0 - 40° C)                           |
| <b>Humidity (non-condensing)</b>        | 10-80%  |
| <b>Net Without Stand (lbs)</b>          | 111.1   |
| <b>Gross (lbs)</b>                      | 153.9   |
| <b>Net Without Stand (kg)</b>           | 50.4  |
| <b>Gross (kg)</b>                       | 69.8  |
| <b>Packaging (in.)</b>                  | 83.39 x 50.05 x 11.02                           |
| <b>Physical (in.)</b>                   | 76.02 x 43.67 x 3.24                            |
| <b>Packaging (mm)</b>                   | 2118.0 x 1271.0 x 280.0                         |
| <b>Physical (mm)</b>                    | 1931.0 x 1109.0 x 82.0                          |

|                                    |   |
|------------------------------------|---|
| <b>VESA Compatible</b>             | 600 x 400 mm  |
| <b>Screw Size</b>                  | M8  |
| <b>AV Control</b>                  | AMX Certified, Crestron Certified (Version 1.0), Extron Certified   |
| <b>Warranty</b>                    | 3-year limited warranty on parts, labor and backlight, onsite warranty  |
| <b>Recycle/Disposal</b>            | Please dispose of in accordance with local, state or federal laws.  |
| <b>Package Contents</b>            | CDE8620-W, Remote control with batteries, Quick Start Guide, Power cable (1.5m), HDMI Cable (3m), Wall Mount Screws and RS232 Adapter |
| <b>Regulations</b>                 | cTUVus, FCC, Energy Star, RoHS, Mexico CoC, Mexico Energy   |
| <b>Screen Size</b>                 | 86"   |
| <b>Viewable Area (in.)</b>         | 86  |
| <b>Light Source</b>                | DLED  |
| <b>Display Resolution</b>          | 3840 x 2160   |
| <b>Panel Type</b>                  | IPS   |
| <b>Static Contrast Ratio</b>       | 1,200:1   |
| <b>Backlight Life (Hours)</b>      | 50,000  |
| <b>Brightness</b>                  | 450 cd/m2   |
| <b>Response Time (Typical GTG)</b> | 8ms   |
| <b>Viewing Angles</b>              | 178° horizontal, 178° vertical  |

UPC: 766907004205



**Contact Sales**  
[ViewSonic.com](http://ViewSonic.com)

888.881.8781 📞  
 email:  
[salesinfo@viewsonic.com](mailto:salesinfo@viewsonic.com)