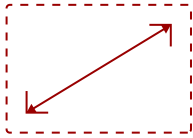


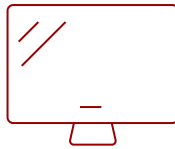
PX727HD - 2000 LUMENS 1080P HOME THEATER PROJECTOR WITH CINEMATIC COLORS

Key Features

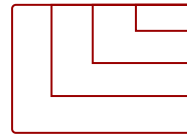
- Stunning Resolution & Brightness
- SuperColor TruCinema Rec. 709
- LONG LAMP LIFE
- REDUCED INPUT LATENCY
- Horizontal and Vertical Keystone Correction
- ISF Certified Color Calibration Tools



30 - 300 in. / 0.76 - 7.62 m
DISPLAY



PANEL



1920 x 1080
RESOLUTION



Product Description

For an incredible audiovisual experience at a great value, the ViewSonic PX727HD projector delivers. Perfect for home entertainment, this projector features Full HD 1920x1080 native resolution, an intuitive, user-friendly design, and a sleek white chassis. Featuring ViewSonic's SuperColor™ TruCinema RGBRGB technology, this projector delivers 100% Rec. 709 color accuracy for brilliant, true-to-life images. Designed with ISF-certified day and night modes, the PX727HD delivers customized calibration for a true cinema experience any time of day. An ultra-low input latency provides faster frame-by-frame action, while a Sports Mode feature delivers stunning detail so you can enjoy fast-action sports on the big screen. Full HD 3D compatibility lets you enjoy 3D movies and games, while a 10W speaker delivers incredibly clear and audible sound. What's more, an energy-saving SuperEco™ feature reduces power consumption and extends the lamp life by up to 20,000 hours.* With 1.3x optical zoom, a smart design, and extensive connectivity, the PX727HD provides flexible and quick set-up in any home.

Specifications

More Information

UPC	766907001822
Light Source	DLP Lamp
Display Resolution	Full HD (1920x1080)
Display Resolution	1920 x 1080
Brightness (Lumens)	2,000 ANSI
Screen Size	30 - 300 in. / 0.76 - 7.62 m
Throw Distance	2.4 - 32.0 ft / 0.7 - 9.8 m
Throw Ratio	1.13-1.47

Keystone	Vertical (+/- 40°) / Horizontal (+/- 40°)
Light Source (watt)	245
Light Source Life, Normal (hours)	4000
Light Source Life, Dynamic Eco-Mode (hours)	20000
Color Depth	1.07B Color (R/G/B 10bit)
Aspect Ratio	16:9
Input Lag	37ms
Frequency Horizontal	15K-102KHz
Frequency Vertical	23-120Hz
PC Resolution (max)	1920 x 1080
PC Resolution (min)	640 x 480
Mac® Resolution (max)	1920 x 1080
Mac® Resolution (min)	640 x 480
USB 2.0 Type A	1
3.5mm Audio Out	1
3.5mm Audio In	1
Control (RS232)	1
HDMI 1.4 In	1
HDMI 1.4 (with HDCP 1.4)	1
VGA In	1
VGA Out	1
Internal Speakers	10W (x1)
Voltage	100-240 VAC
Consumption (typical)	355W
Stand-by	<0.5W
Temperature	32-104° F (0 - 40° C)
Humidity (non-condensing)	0-90%
Kensington Lock Slot	1
Net (lbs)	5.8
Gross (lbs)	8.3
Net (kg)	2.8
Gross (kg)	3.9
Packaging (in.)	16.3 x 6.6 x 11.7
Physical (in.)	12.3 x 8.7 x 4.3
Packaging (mm)	415.0 x 168.0 x 297.0
Physical (mm)	312.0 x 222.0 x 108.0

Regulations	FCC, cTUVus, ROHS
Package Contents	PX727HD projector, power cable, VGA cable, remote control, Quick Start Guide
Warranty	Three-year limited warranty on parts and labor, 1-year limited warranty on lamp, 1st year free Express Exchange® service. (One year Express Exchange Service requires product registration).
Recycle/Disposal	Please dispose of in accordance with local, state or federal laws.
Classification	Discontinued

UPC: 766907001822



Contact Sales

ViewSonic.com

888.881.8781

email: salesinfo@viewsonic.com