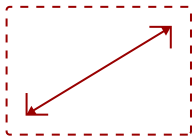


CDE9800

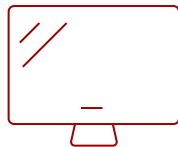
## Key Features

---

- Ultra HD Resolution
  - Built-in Multi-Core Media Player with 16GB Storage
  - Embedded LAN and Optional Wireless Connectivity
  - ViewBoard® Cast Content Sharing Software
  - Free Bundled vController™ Software
- 



98"  
DISPLAY



IPS-Type  
PANEL



RESOLUTION



## Product Description

---

The ViewSonic® CDE9800 is a 98" (97.5" viewable) 4K Ultra HD commercial display purpose-built to deliver eye-catching imagery for hotels, restaurants, retail, business, and more. With stunning 3840x2160 resolution, 500-nit typical high brightness, wide viewing angles, and dual 16W speakers, this display provides immersive, high-impact messaging wherever needed. In addition to HDMI, DVI, and VGA inputs to connect with various high definition devices, this display utilizes an integrated multi-core processor and 16GB of internal memory, allowing customers to playback multimedia content via USB without the need for a PC. To make life even easier, the bundled vController software offers easy maintenance and intuitive interfaces for remote management via a PC server or laptop, and its flicker-free and blue light filter technologies help provide a comfortable viewing environment.

## Specifications

---

### More Information

<b>UPC</b>	766907002706
<b>Media Player Type</b>	Yes
<b>CPU</b>	Quad Core - Cortex A53
<b>Memory</b>	3GB
<b>Storage</b>	16GB eMMC
<b>Internal Speakers</b>	16W (x2)
<b>HDMI 2.0 In</b>	2
<b>HDMI 2.0 Out</b>	1
<b>VGA</b>	1

<b>DisplayPort</b>	1
<b>3.5mm Audio In</b>	1
<b>3.5mm Audio Out</b>	1
<b>USB 2.0</b>	1
<b>Slot-in PC Slot</b>	1
<b>RS232</b>	1
<b>Ethernet LAN (RJ45)</b>	1
<b>SDM Slot</b>	1
<b>Voltage</b>	100-240 VAC +/- 10% Wide Range, 50-60Hz +/-3 Hz
<b>Consumption (typical)</b>	385W
<b>Stand-by</b>	<0.5W
<b>Temperature</b>	41-104° F (5 - 40° C)
<b>Humidity (non-condensing)</b>	20-80%
<b>Net Without Stand (lbs)</b>	230.4
<b>Gross (lbs)</b>	347.4
<b>Net Without Stand (kg)</b>	104.5
<b>Gross (kg)</b>	157.6
<b>Packaging (in.)</b>	99.4 x 67 x 17.1
<b>Physical Without Stand (in.)</b>	86.5 x 49.4 x 4.3
<b>VESA Compatible</b>	800 x 600 mm
<b>Screw Size</b>	M8
<b>Recycle/Disposal</b>	Please dispose of in accordance with local, state or federal laws.
<b>Package Contents</b>	CDE9800, Remote control, Quick Start Guide, Power cables, HDMI cable, Compliance statement
<b>Regulations</b>	cULus, FCC, Energy Star 8.0, UL-MX-CoC, Mexico Energy
<b>Classification</b>	Discontinued
<b>Screen Size</b>	98"
<b>Viewable Area (in.)</b>	97.5
<b>Light Source</b>	DLED
<b>Display Resolution</b>	3840 x 2160
<b>Panel Type</b>	IPS-Type
<b>Aspect Ratio</b>	16:9
<b>Static Contrast Ratio</b>	1,300:1
<b>Backlight Life (Hours)</b>	30,000
<b>Brightness</b>	500 cd/m2
<b>Response Time (Typical GTG)</b>	5ms
<b>Bezel Width (in.)</b>	0.8

**Bezel Width (mm)**

20.3

**Viewing Angles**

178° horizontal, 178° vertical

**Panel Surface**

3H Anti-glare, hard-coating

**Operation Rating**


16/7

UPC: 766907002706



### Contact Sales

[ViewSonic.com](http://ViewSonic.com)

888.881.8781 

email: [salesinfo@viewsonic.com](mailto:salesinfo@viewsonic.com) 