

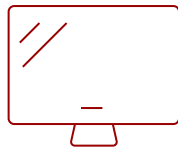
EP4320-2

## Key Features

- Free-Standing Design
- Built-in Quad-core Media Player with 16GB storage
- Versatile Connectivity
- Internal scheduler
- Easy Multi-device Management



43"  
DISPLAY



IPS  
PANEL



RESOLUTION



## Product Description

The ViewSonic® EP4320-2 is a 43" all-in-one free-standing digital ePoster kiosk with a sleek, slim design. Great for grabbing attention in busy, high-traffic areas, the EP4320-2 comes with a scratch-proof tempered glass faceplate for added durability. Featuring Full HD 1080p resolution, 178°/178° wide-angle viewing, 450-nit brightness, 1,200:1 contrast ratio, and dual 10W stereo speakers, the EP4320-2 delivers customized multimedia messaging with vivid clarity. Photo and video files can be played back using the embedded Quad-core media player and 16GB of flash storage, or add your own media player using the convenient media player cradle inside the lockable security door.

## Specifications

### More Information

<b>UPC</b>	766907984712
<b>Screen Size</b>	43"
<b>Viewable Area (in.)</b>	43
<b>Display Resolution</b>	1920 x 1080
<b>Light Source</b>	LED
<b>Orientation</b>	Portrait
<b>Static Contrast Ratio</b>	1,200:1
<b>Brightness</b>	450 cd/m2
<b>Viewing Angles</b>	178° horizontal, 178° vertical
<b>Backlight Life (Hours)</b>	50,000

<b>Response Time (Typical GTG)</b>	14ms
<b>Panel Surface</b>	7H/ 5mm Tempered glass
<b>Panel Type</b>	IPS
<b>Aspect Ratio</b>	16:9
<b>Operation Rating</b>	16/7
<b>Internal Speakers</b>	10W (x2)
<b>3.5mm Audio In</b>	1
<b>3.5mm Audio Out</b>	1
<b>Ethernet LAN (RJ45)</b>	1
<b>HDMI 1.4 In</b>	2
<b>HDMI MHL</b>	1
<b>VGA</b>	1
<b>RS232 In</b>	1
<b>USB 2.0 Type A</b>	2
<b>USB 3.0 Type A</b>	1
<b>Media Player Type</b>	Yes
<b>CPU</b>	USB Supported internal media player
<b>RAM</b>	2GB
<b>Storage Capacity</b>	16GB
<b>Storage Type</b>	Flash
<b>Built-in Software</b>	OSD / Remote Control
<b>Voltage</b>	100-240 VAC
<b>Consumption (max)</b>	92W
<b>Consumption (typical)</b>	72W
<b>Stand-by</b>	<0.5W
<b>Temperature</b>	32-104° F (0 - 40° C)
<b>Humidity (non-condensing)</b>	10-90%
<b>Gross (lbs)</b>	130.1
<b>Net (lbs)</b>	108.0
<b>Gross (kg)</b>	59.0
<b>Net (kg)</b>	49.0
<b>Packaging (in.)</b>	29.6 x 74.8 x 22.0
<b>Physical (in.)</b>	25.4 x 70.8 x 17.7
<b>Packaging (mm)</b>	752.0 x 1900.0 x 558.0
<b>Physical (mm)</b>	645.0 x 1800.0 x 450.0

**On Screen Display**

Picture Mode, Contrast, Brightness, Hue, Sharpness, Saturation, Anti-Flicker, Backlight, Screen, Color temperature, Bluelight Filter, Zoom Mode, OverScan, Image NR

**Remote Control**

Sound Mode, Bass, Treble, Balance, Surround, Alone, MHL Auto Switch, Menu Timeout, Data/Time, Off Timer, On Timer, Sleep Time, Set Password, System ID, Lock Keypad, LowerPower Standby, Restore To Default

**Regulations**

FCC/cTUVus /TUV-Mexico CoC/Mexico Energy/CE EMC/CB/ErP/PSB/RCM/BSMI

**Package Contents**

EP4320-2, Power Cord, Remote control with batteries, Quick start guide, User's Manual CD, Door Key

**Recycle/Disposal**

Please dispose of in accordance with local, state or federal laws.

**Warranty**

One-year limited warranty on parts, labor and backlight

**Classification**

Discontinued

UPC: 766907984712



**Contact Sales**

[ViewSonic.com](http://ViewSonic.com)

888.881.8781 ☎

email: [salesinfo@viewsonic.com](mailto:salesinfo@viewsonic.com) ✉