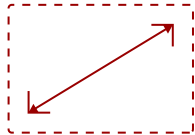


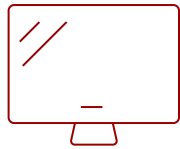
PS600X - 3700 LUMENS XGA NETWORKABLE SHORT THROW PROJECTOR

Key Features

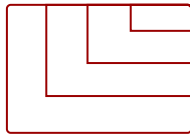
- High brightness 3700 Lumens XGA projector with 0.61 short throw and advanced visual features
- 0.61 throw ratio, H/V keystone and corner adjustment for flexible setup
- SuperEco Mode allows the lamp to shine bright for up to 15,000 hours
- 6 segment color wheel and dynamic lamp control capabilities provide vivid colors
- A low 16ms input latency provides faster frame-by-frame action for smooth images without delay
- Supports most media players, PCs, Macs, and mobile devices with inputs such as Dual HDMI, USB, Ethernet LAN



30 - 300 in. / 0.76 - 7.62 m
DISPLAY



PANEL



1920 x 1080
RESOLUTION



Product Description

The ViewSonic® PS600X networkable projector features 3,700 lumens, native XGA 1024x768 resolution, and an intuitive, user-friendly design. Exclusive SuperColor™ technology offers a wide color gamut for beautiful image production in nearly any environment, and a 10W speaker delivers incredibly clear and audible sound. A short throw lens with a 0.61 throw ratio offers large projection images for smaller rooms. With HV keystone, corner adjustment, and easy network management, the PS600X provides flexible setup. Designed with smarter features and extensive connectivity, the networkable short throw PS600X is ideal for use in education and corporate environments.

Specifications

More Information	
UPC	766907958218
Light Source	DLP Lamp

Display Resolution	XGA (1024x768)
Display Resolution	1024 x 768
Brightness (Lumens)	3,700 ANSI
Screen Size	30 - 300 in. / 0.76 - 7.62 m
Throw Distance	2.4 - 7.3 ft / 0.7 - 2.2 m
Throw Ratio	0.6
Keystone	Vertical (+/- 40°) / Horizontal (+/- 26°)
Lens	Fixed Zoom
Light Source (watt)	190
Light Source Life, Normal (hours)	5000
Light Source Life, Dynamic Eco-Mode (hours)	15000
Color Depth	1.07B Color (R/G/B 10bit)
Dynamic Contrast Ratio	22,000:1
Aspect Ratio	4:3
Input Lag	37ms
Frequency Horizontal	15K ~ 102KHz
Frequency Vertical	23 ~ 120Hz
PC Resolution (max)	1920 x 1080
PC Resolution (min)	640 x 480
Mac® Resolution (max)	1920 x 1080
Mac® Resolution (min)	640 x 480
USB 2.0 Type A	1
Ethernet LAN (RJ45)	1
3.5mm Audio Out	1
3.5mm Audio In	1
Control (RS232)	1
HDMI 1.4 In	2
VGA In	2
VGA Out	1
Composite RCA Video In	1
Mini USB	1
Internal Speakers	10W (x1)
Voltage	100-240V +/- 10%, 50/60Hz AC
Consumption (typical)	260W
Stand-by	<0.5W

Physical Controls	Power, keystone/arrow keys, left/blank, menu/exit, right/panel key lock, mode/enter, auto, source
On Screen Display	Display, Image, Power Management, Basic, Advanced, System, Information (See user guide for full OSD functionality)
Temperature	32-104° F (0 - 40° C)
Humidity (non-condensing)	0-90%
Kensington Lock Slot	1
Net (lbs)	5.7
Gross (lbs)	7.2
Net (kg)	2.6
Gross (kg)	3.3
Packaging (in.)	14.4 x 7.4 x 11.8
Physical (in.)	11.5 x 4.5 x 9.3
Packaging (mm)	365.0 188.0 x 300.0
Physical (mm)	292.0 x 115.0 x 236.0
AV Control	AMX Certified, ATEN Certified, Crestron Certified, PJ Link Certified
Regulations	FCC, cTUVus, ROHS
Package Contents	PS600X projector, power cable, VGA cable, remote control, Quick Start Guide
Warranty	Three-year limited warranty on parts and labor, 1-year limited warranty on lamp, 1st year free Express Exchange® service. (One year Express Exchange Service requires product registration).
Recycle/Disposal	Please dispose of in accordance with local, state or federal laws.

UPC: 766907958218



Contact Sales

ViewSonic.com

888.881.8781

email:

salesinfo@viewsonic.com