

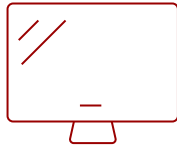
# VIEWSONIC 32" CURVED 1440P 1MS 180HZ GAMING MONITOR WITH FREESYNC | VX3228C-2K

## Key Features

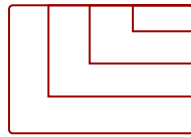
- See The Difference: 32 Inch QHD (2560x1440p) IPS gaming monitor with thin bezels
- Maximized Gameplay: 180Hz refresh rate and 1ms (MPRT) response time for ultimate gaming experience
- Ultra-Smooth Gaming: AMD FreeSync technology enables fluid and tear-free gameplay
- HDR10 Content Support: For deep contrast, rich color, and vibrant details
- Flexible Connectivity: The VX3228C-2K supports laptops, PCs, Macs and more with HDMI, and DisplayPort inputs



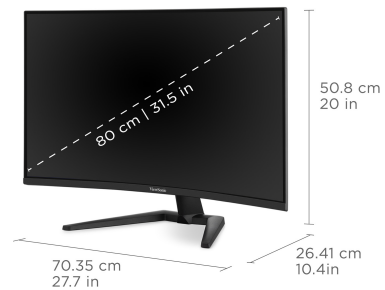
32"  
DISPLAY



MVA  
PANEL



2560x1440  
RESOLUTION



QHD (2560x1440p)  
RESOLUTION

## Product Description

Work hard and play harder with the ViewSonic® VX3228C-2K monitor. Designed with an immersive 32" 1000R curved screen and stunning WQHD 2560 x 1440 resolution, the VX3228C-2K monitor provides an incredible viewing experience for both office use and home entertainment. And with features including a 180Hz\* refresh rate, 1ms (MPRT) response time and AMD FreeSync™ technology, this monitor virtually eliminates screen tearing and stuttering for a silky-smooth gaming experience. The VX3228C-2K also comes equipped with ViewSonic's exclusive ViewMode™ presets, which deliver optimized screen performance for various usage scenarios. Two HDMI (v2.0) inputs and one DisplayPort (v1.4) input offer flexible connectivity for your favorite devices.

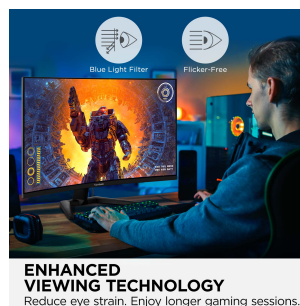
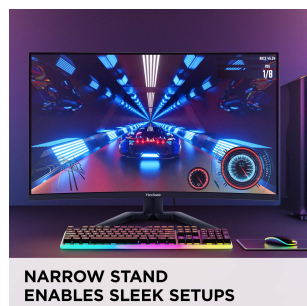
\*180Hz refresh rate with DisplayPort

# Specifications

	More Information
<b>UPC</b>	766907028232
<b>Screen Size</b>	32"
<b>Viewable Area (in.)</b>	31.5
<b>Panel Type</b>	MVA
<b>Display Resolution</b>	2560 x 1440
<b>Display Resolution</b>	WQHD (2560x1440)
<b>Static Contrast Ratio</b>	3,000:1
<b>Dynamic Contrast Ratio</b>	50,000,000:1
<b>Light Source</b>	LED
<b>Brightness</b>	300 cd/m2
<b>Colors</b>	16.7M
<b>Color Space Support</b>	6 bit + FRC
<b>Aspect Ratio</b>	16:9
<b>Response Time (Typical GTG)</b>	2ms
<b>Response Time (MPRT)</b>	1ms
<b>Viewing Angles</b>	178° horizontal, 178° vertical
<b>Backlight Life (Hours)</b>	30,000
<b>Panel Surface</b>	Anti-Glare type, Hard-coating (3H), Haze 25%
<b>Curvature</b>	1000R
<b>Refresh Rate</b>	180Hz
<b>PC Resolution (max)</b>	2560x1440
<b>Mac® Resolution (max)</b>	2560x1440
<b>3.5mm Audio Out</b>	1
<b>HDMI 2.0 In</b>	2
<b>DisplayPort</b>	1
<b>Internal Speakers</b>	2W (x2)
<b>Eco Mode (Conserve)</b>	20W
<b>Eco Mode (optimized)</b>	23W
<b>Consumption (typical)</b>	26W
<b>Consumption (max)</b>	36W
<b>Voltage</b>	100-240 VAC
<b>Stand-by</b>	0.5W
<b>Power Supply</b>	External

<b>Cable Organization</b>	No
<b>Physical Controls</b>	Up, Right, Down, Left, Power
<b>On Screen Display</b>	Input Select, Audio Adjust, ViewMode, Color Adjust, Manual Image Adjust, Setup Menu
<b>Temperature</b>	32-104° F (0 - 40° C)
<b>Humidity (non-condensing)</b>	20-90%
<b>VESA Compatible</b>	100 x 100 mm
<b>Frequency Horizontal</b>	HDMI: 28 ~ 214 KHz, DisplayPort: 28 ~ 263 KHz
<b>Frequency Vertical</b>	HDMI: 48 ~ 144 Hz, DisplayPort: 48 ~ 180 Hz
<b>Tilt (Forward/Back)</b>	5° / 22°
<b>Regulations</b>	cTUVus, FCC-B, ICES003, Energy Star 8.0, EPEAT Bronze, CEC, NOM, Mexico Energy
<b>Net (lbs)</b>	11.8
<b>Net Without Stand (lbs)</b>	10.1
<b>Gross (lbs)</b>	16.5
<b>Net (kg)</b>	5.3
<b>Net Without Stand (kg)</b>	4.6
<b>Gross (kg)</b>	7.5
<b>Packaging (in.)</b>	30.8 x 19.7 x 8.1
<b>Physical (in.)</b>	27.7 x 20.0 x 10.4
<b>Physical Without Stand (in.)</b>	27.7 x 16.6 x 4.1
<b>Packaging (mm)</b>	782.0 x 500.0 x 205.0
<b>Physical (mm)</b>	702.5 x 507.9 x 262.8
<b>Physical Without Stand (mm)</b>	702.5 x 421.3 x 103.9
<b>Package Contents</b>	LCD Display, DisplayPort Cable, AC/DC Adapter, Quick Start Guide
<b>Recycle/Disposal</b>	Please dispose of in accordance with local, state or federal laws.
<b>Warranty</b>	Three-year limited warranty on parts, labor and backlight

UPC: 766907028232



## Contact Sales

[ViewSonic.com](http://ViewSonic.com)

888.881.8781

email:

[salesinfo@viewsonic.com](mailto:salesinfo@viewsonic.com)