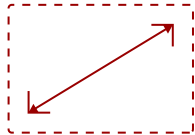


CDX5562

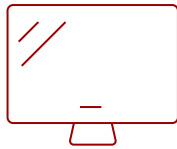
## Key Features

---

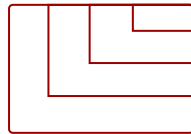
- Ultra-narrow Bezel
- SuperClear® IPS Panel Technology
- 10x10 Tiling Support with DisplayPort or DVI
- Control Multiple Devices
- Free Bundled vController™ Software



55"  
DISPLAY



PANEL



RESOLUTION



## Product Description

---

The ViewSonic® CDX5562 is a 55" (54.64" viewable) commercial display with a super ultra-narrow bezel optimized for multi-panel video wall applications. With an edge-to-edge bezel width of only 1.8mm between combined displays, and 10x10 installation via DisplayPort or DVI daisy-chain, the CDX5562 delivers nearly seamless, high-impact video walls for public, retail, and transportation settings. With Full HD 1080p resolution, 700-nit high brightness, SuperClear® technology for wide viewing angles, and dual 10W stereo speakers, the CDX5562 delivers sharp, vivid images with incredible sound and multimedia performance.

## Specifications

---

### More Information

UPC

766907961614

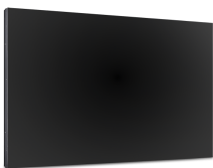
CPU

USB Supported internal media player

<b>Built-in Software</b>	OSD / Remote Control
<b>Internal Speakers</b>	10W (x2)
<b>HDMI 1.4 In</b>	2
<b>DVI-D</b>	1
<b>DVI-D Out</b>	1
<b>VGA</b>	1
<b>DisplayPort</b>	1
<b>DisplayPort Out</b>	1
<b>Composite RCA</b>	1
<b>Component RCA</b>	1
<b>3.5mm Audio In</b>	1
<b>3.5mm Audio Out</b>	1
<b>Speaker Out</b>	1
<b>USB 2.0</b>	1
<b>Slot-in PC Slot</b>	1
<b>RS232</b>	1
<b>RS232 Out</b>	1
<b>Ethernet LAN (RJ45)</b>	1
<b>Voltage</b>	100-240 VAC
<b>Consumption With Slot-In PC (typical)</b>	334W
<b>Consumption Without Slot-In PC (typical)</b>	270W
<b>Stand-by</b>	<0.5W
<b>Temperature</b>	41-104° F (5 - 40° C)
<b>Humidity (non-condensing)</b>	20-80%
<b>Net (lbs)</b>	58.8
<b>Net Without Stand (lbs)</b>	53.7
<b>Gross (lbs)</b>	81.1
<b>Net (kg)</b>	26.7
<b>Net Without Stand (kg)</b>	24.4
<b>Gross (kg)</b>	36.8
<b>Packaging (in.)</b>	58.1 x 38.7 x 14.8
<b>Physical (in.)</b>	47.7 x 26.9 x 3.9
<b>Packaging (mm)</b>	1475.0 x 983.0 x 375.0
<b>Physical (mm)</b>	1211.4 x 682.2 x 98.5
<b>VESA Compatible</b>	400 x 400 mm
<b>Screw Size</b>	M6

<b>Screw Length (mm)</b>	10
<b>Recycle/Disposal</b>	Please dispose of in accordance with local, state or federal laws.
<b>Package Contents</b>	CDX5562 Commercial Display, Remote control, User Manual, Quick Start Guide, power cables, VGA cable, RS232 cable, IR sensor cable, RS232 daisy chain cable, Edge Alignment kit 1 & 2, Thumb screw
<b>Regulations</b>	UL/cUL, FCC, Energy Star 6.0, UL-MX-CoC, Mexico Energy
<b>Classification</b>	Discontinued
<b>Screen Size</b>	55"
<b>Viewable Area (in.)</b>	54.6
<b>Orientation</b>	Landscape / Portrait
<b>Light Source</b>	DLED
<b>Display Resolution</b>	1920 x 1080
<b>Aspect Ratio</b>	16:9
<b>Static Contrast Ratio</b>	1,200:1
<b>Backlight Life (Hours)</b>	50,000
<b>Brightness</b>	700 cd/m2
<b>Response Time (Typical GTG)</b>	8ms
<b>Bezel Width (in.)</b>	Top 0.035 in / Left 0.035 in / Bottom 0.035 in / Right 0.035 in
<b>Bezel Width (mm)</b>	Top 0.9 mm / Left 0.9 mm / Bottom 0.9 mm / Right 0.9 mm
<b>Viewing Angles</b>	178° horizontal, 178° vertical
<b>Panel Surface</b>	Anti-glare, Hard coating (3H)
<b>Operation Rating</b>	24/7

UPC: 766907961614



### Contact Sales

[ViewSonic.com](http://ViewSonic.com)

888.881.8781

email:

[salesinfo@viewsonic.com](mailto:salesinfo@viewsonic.com)