

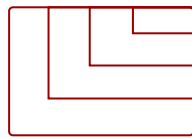
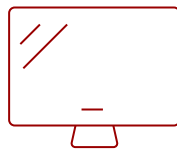
VIEWSONIC 4,000 LUMENS WXGA PROJECTOR WITH HDMI AND VERTICAL KEYSTONE | PA503W

Key Features

- High Brightness DLP Lamp Projector: WXGA (1280x800p) resolution with a 1.5-1.7 throw ratio and 4,000 ANSI lumens for clear, detailed images in any space
- Vibrant Colors: SuperColor technology delivers a wide color gamut and stunningly beautiful images.
- Designed for Fast Paced Content: A low 16ms input latency and 120Hz refresh rate provides faster frame-by-frame action for smooth images with minimal delay
- Large Screen Projection: Projects screen sizes from 80" to 150" with a throw distance of 8.8 ft - 16.4 ft; displays a 100" image from 11 ft
- Easy Setup & Image Adjustment: Features 1.1x optical zoom, 0.8x-2.0x digital zoom, and vertical keystone
- Installation Options: This projector is ceiling mountable; compatible with ViewSonic mount PJ-WMK-007



30 - 300 in. / 0.76 - 7.62 m **PANEL DISPLAY**



VGA(640 x 480) to FullHD(1920 x 1080) **RESOLUTION**



SUPERCOLOR™ TECHNOLOGY
offers true-to-life color accuracy

Product Description

The ViewSonic® PA503W price-performance projector features 4,000 lumens, native WXGA 1280x800 resolution, and an intuitive, user-friendly design. Exclusive SuperColor™ technology offers a wider color range for lifelike image projection. The PA503W also features extensive connectivity including HDMI, 2 x VGA in, Composite Video, 1 x VGA output, and Audio in/out. An energy-saving SuperEco™ feature reduces power consumption by up to 70%, and extends the lamp life by up to 15,000 hours*. With advanced audiovisual features, flexible connectivity options, and an affordable price, the PA503W is ideal for use in education and small business environments.

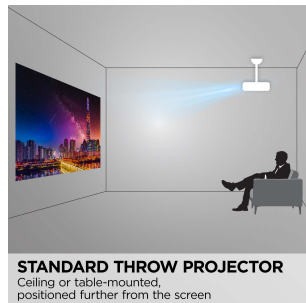
*Energy consumption and lamp life may vary based on actual usage and other factors.

Specifications

	More Information
UPC	766907904918
Light Source	DLP Lamp
Display Resolution	WXGA (1280x800)
Display Resolution	1280 x 800
Brightness (Lumens)	4,000 ANSI
Screen Size	30 - 300 in. / 0.76 - 7.62 m
Throw Distance	3.28 - 36.02 ft / .99 - 10.98 m
Throw Ratio	1.55~1.70
Keystone	Vertical (+/- 40°)
Lens	1.1x optical zoom
Light Source (watt)	200
Light Source Life, Normal (hours)	6000
Light Source Life, Dynamic Eco-Mode (hours)	15000
Color Depth	30 bits, 1.07B Color (10+10+10)
Dynamic Contrast Ratio	22,000:1
Aspect Ratio	16:10
Input Lag	37ms
Frequency Horizontal	15K~102KHz
Frequency Vertical	23~120MHz
PC Resolution (max)	VGA(640 x 480) to FullHD(1920 x 1080)
Mac® Resolution (max)	VGA(640 x 480) to FullHD(1920 x 1080)
3.5mm Audio Out	1
3.5mm Audio In	1
Control (RS232)	1
HDMI In	1
VGA In	2
VGA Out	1
Composite RCA Video In	1
Mini USB	1
Internal Speakers	2W (x1)
Voltage	100-240V+/- 10%, 50/60Hz AC
Consumption (typical)	260W
Stand-by	<0.5W

Temperature	32-104° F (0 - 40° C)
Net (lbs)	4.9
Gross (lbs)	7.1
Net (kg)	2.2
Gross (kg)	3.2
Packaging (in.)	14.4 x 7.4 x 11.8
Physical (in.)	11.6 x 4.3 x 8.6
Packaging (mm)	365 x 188 x 300
Physical (mm)	294 x 110 x 218
Regulations	FCC (including ICES003), cTUVus, NOM, TUV-Rheinland S Mark
Package Contents	PA503W projector, power cable, VGA cable, laser remote control with batteries, Quick Start Guide
Warranty	Three-year limited warranty on parts and labor, 1-year limited warranty on lamp, 1st year free Express Exchange® service. (One year Express Exchange Service requires product registration).
Recycle/Disposal	Please dispose of in accordance with local, state or federal laws.

UPC: 766907904918



Contact Sales

ViewSonic.com

888.881.8781

email:

salesinfo@viewsonic.com