

# VIEWSONIC 4,000 LUMENS SVGA PROJECTOR WITH HDMI AND VERTICAL KEYSTONE | PA503S

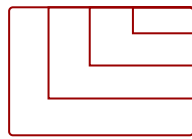
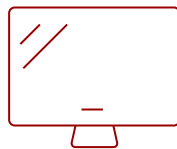
## Key Features

---

- High Brightness DLP Lamp Projector: SVGA (800x600p) resolution with a 1.9-2.1 throw ratio and 4,000 ANSI lumens for clear, detailed images in any space
- Vibrant Colors: SuperColor technology delivers a wide color gamut and stunningly beautiful images.
- Designed for Fast Paced Content: A low 16ms input latency and 120Hz refresh rate provides faster frame-by-frame action for smooth images with minimal delay
- Large Screen Projection: Projects screen sizes from 80" to 150" with a throw distance of 10.5 ft - 19.6 ft; displays a 100" image from 13 ft
- Easy Setup & Image Adjustment: Features 1.1x optical zoom, 0.8x-2.0x digital zoom, and vertical keystone
- Installation Options: This projector is ceiling mountable; compatible with ViewSonic mount PJ-WMK-007



30 - 300 in. / 0.76 - 7.62 m **PANEL DISPLAY**



VGA (640 x 480) to WUXGA\_RB (1920 x 1200) **RESOLUTION**



**SUPERCOLOR™ TECHNOLOGY**  
offers true-to-life color accuracy

## Product Description

---

The ViewSonic® PA503S price-performance projector features 4,000 lumens, native SVGA 800 x 600 resolution, and intuitive, user-friendly design. Exclusive SuperColor™ technology offers a wide color gamut for beautiful image production in nearly any environment. The PA503S also features extensive connectivity including HDMI, 2 x VGA, VGA out, Composite Video and audio in/out. An energy-saving SuperEco™ feature reduces power consumption and extends the lamp life by up to 15,000 hours. With advanced audio-visual features, flexible connectivity options, and an affordable price, the PA503S is ideal for use in education and small business environments.

\*Energy consumption and lamp life may vary based on actual usage and other factors.

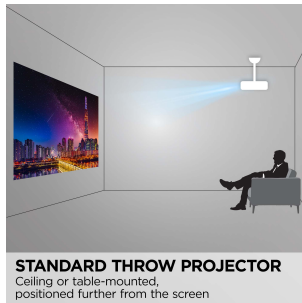
# Specifications

---

	More Information
<b>UPC</b>	766907904710
<b>Light Source</b>	DLP Lamp
<b>Display Resolution</b>	SVGA (800x600)
<b>Display Resolution</b>	800 x 600
<b>Brightness (Lumens)</b>	4,000 ANSI
<b>Screen Size</b>	30 - 300 in. / 0.76 - 7.62 m
<b>Throw Distance</b>	3.9 - 43 ft / 1.19 - 13.11 m
<b>Throw Ratio</b>	1.96 ~ 2.15
<b>Keystone</b>	Vertical (+/- 40°)
<b>Lens</b>	1.1x optical zoom
<b>Light Source (watt)</b>	190
<b>Light Source Life, Normal (hours)</b>	5000
<b>Light Source Life, Dynamic Eco-Mode (hours)</b>	15000
<b>Color Depth</b>	1.07B Color (R/G/B 10bit)
<b>Dynamic Contrast Ratio</b>	22,000:1
<b>Aspect Ratio</b>	4:3
<b>Input Lag</b>	37ms
<b>Frequency Horizontal</b>	15K~102KHz
<b>Frequency Vertical</b>	23~120Hz
<b>PC Resolution (max)</b>	VGA (640 x 480) to WUXGA_RB (1920 x 1200)
<b>Mac® Resolution (max)</b>	VGA (640 x 480) to WUXGA_RB (1920 x 1200)
<b>Mini USB Type B</b>	1
<b>3.5mm Audio Out</b>	1
<b>3.5mm Audio In</b>	1
<b>Control (RS232)</b>	1
<b>HDMI 1.4 In</b>	1
<b>VGA In</b>	2
<b>VGA Out</b>	1
<b>Composite RCA Video In</b>	1
<b>Internal Speakers</b>	2W (x1)
<b>Voltage</b>	AC 100-240V (universal), 50-60Hz
<b>Consumption (typical)</b>	260W
<b>Stand-by</b>	<0.5W

<b>Temperature</b>	32-104° F (0 - 40° C)
<b>Net (lbs)</b>	4.9
<b>Gross (lbs)</b>	7.1
<b>Net (kg)</b>	2.2
<b>Gross (kg)</b>	3.2
<b>Packaging (in.)</b>	14.4 x 7.4 x 11.8
<b>Physical (in.)</b>	11.6 x 4.3 x 8.6
<b>Packaging (mm)</b>	365 x 188 x 300
<b>Physical (mm)</b>	294 x 110 x 218
<b>Regulations</b>	FCC (including ICES-003), cTUVus
<b>Package Contents</b>	PA503S projector, power cable, VGA cable, remote control, Quick Start Guide
<b>Warranty</b>	Three-year limited warranty on parts and labor, 1-year limited warranty on lamp, 1st year free Express Exchange® service. (One year Express Exchange Service requires product registration).
<b>Recycle/Disposal</b>	Please dispose of in accordance with local, state or federal laws.

UPC: 766907904710



**Contact Sales**  
[ViewSonic.com](http://ViewSonic.com)

888.881.8781  
email:  
[salesinfo@viewsonic.com](mailto:salesinfo@viewsonic.com)