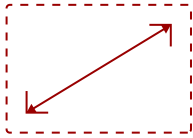


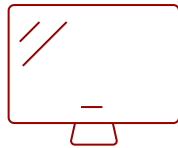
CDM5500R

Key Features

- Built-in Quad Core Media Player with 16GB Storage
 - Embedded LAN and Wi-Fi
 - Internet Browser
 - Internal Scheduler
 - Content Management Software
-



55
DISPLAY



PANEL



RESOLUTION



Product Description

Physical deployment, content creation, and message delivery couldn't be easier than with the ViewSonic® CDM5500R. Featuring an internal media player this commercial display gives you everything you need for easy digital signage - right out of the box. Loaded with a powerful, high-performance processor and 16GB of storage (upgradeable to 32GB), the built-in media player ensures hours upon hours of smooth, high-definition multimedia content delivery. The CDM5500R also features built-in LAN / WiFi for easy connection to the internet for content delivery. Additional commercial features include an internal scheduler, tiling for video wall application, and commercial construction for reliable messaging 24 hours a day, 7 days a week.

Specifications

More Information

UPC	766907844016
OS	4.4.4
Media Player Type	Yes
CPU	Quad core A9 CPU - RK3188
Memory	2GB
Storage	16GB
Built-in Software	OSD / Remote Control
Internal Speakers	10W (x2)
HDMI 1.4 In	2

DVI-I	1
DVI-I Out	1
DisplayPort	1
DisplayPort Out	1
RCA Audio In	1
RCA Audio Out	1
Speaker Out	2
USB 2.0	2
RS232 Out	1
Ethernet LAN (RJ45)	1
SD Card Reader	1
Voltage	100-240 VAC
Consumption (max)	130W
Consumption (typical)	75W
Stand-by	<.5W
On Screen Display	POWER, MUTE, INPUT, VOL -/+, UP, DOWN, MENU
Remote Control	Brightness, Contrast, Sharpness, Black Level, Tint, Color, Noise Reduction, Gamma Selection, Color Temperature, Color Control, Picture Mode, Overscan, Flicker Free, Blue Filter, Picture Reset, Brightness, Contrast, Sharpness, Black Level, Tint, Color, Noi
Temperature	41-104° F (5 - 40° C)
Humidity (non-condensing)	10-90%
Net (lbs)	48.7
Net Without Stand (lbs)	39.6
Gross (lbs)	53.5
Net (kg)	22
Net Without Stand (kg)	18
Gross (kg)	24.3
Packaging (in.)	54.0 x 37.4 x 8.7
Physical (in.)	48.5 x 27.9 x 1.8
Packaging (mm)	1448 x 952 x 223
Physical (mm)	1233 x 710 x 45.5
VESA Compatible	400 x 400 mm
Screw Size	M6
Screw Length (mm)	10
Recycle/Disposal	Please dispose of in accordance with local, state or federal laws.
Package Contents	CDM5500R, Remote control, User Manual, Quick Start Guide, power cables, RS232 cable, IR sensor cable, RS232 daisy chain cable

Regulations	UL/cUL, FCC, Energy Star 7.0, UL-MX-CoC, Mexico Energy
Ethernet LAN	10/100 BASE-T
Wifi	802.11 b/g/n
Screen Size	55
Viewable Area (in.)	54.6
Orientation	Landscape / Portrait
Light Source	ELED
Display Resolution	1920 x 1080
Aspect Ratio	16:9
Static Contrast Ratio	1,100:1
Backlight Life (Hours)	50,000
Brightness	450 cd/m2
Response Time (Typical GTG)	12ms
Bezel Width (in.)	Top 0.38 in / Left 0.38 in / Bottom 0.62 in / Right 0.38 in
Bezel Width (mm)	Top 9.6 mm / Left 9.6 mm / Bottom 15.7 mm / Right 9.6 mm
Viewing Angles	178° horizontal, 178° vertical
Panel Surface	3H Anti-glare, hard-coating
Operation Rating	24/7

UPC: 766907844016



Contact Sales

ViewSonic.com

888.881.8781

email: salesinfo@viewsonic.com