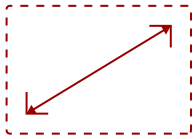


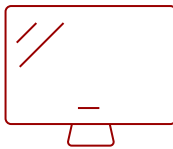
PRO8510L - 1024 X 768 RESOLUTION, 5,200 ANSI LUMENS, 1.41 ~ 2.25 THROW RATIO

Key Features

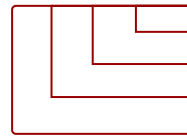
- 5,200 lumen brightness
- Vertical lens shift with centered lens
- Secure MHL/HDMI port, and optional HDBT adapter
- 4 HDMI ports for flexible connectivity



30 - 300 in. / 0.76 - 7.62 m
DISPLAY



PANEL



Up to 1920x1080
RESOLUTION



Product Description

Delivering 1024 x 768 resolution and 5200 lumens of brightness, the ViewSonic® LightStream® Pro8510L is the ideal XGA projector for professional installations, large venues, and business and education environments. With its 1.6x optical zoom, centered lens, vertical lens shift, and HV keystoneing, the Pro8510L provides extreme flexibility even in the most challenging installations. The Pro8510L boasts a sleek top cover design for quick lamp and accessory access, while an intuitive PortAll® compartment accommodates additional accessories such as an HDBT receiver, wireless streaming device, or PC stick. The cable management hood hides unsightly cables, and a 4-in-1 power button serves as a central point for LED notifications. Moreover, four HDMI ports and additional audio and video ports allow for extensive connectivity to handle multiple devices without the need to switch cables. Powered by SuperColor™ technology for beautiful image reproduction, and SonicExpert™ technology for incredibly clear sound, the Pro8510L delivers a professional audiovisual performance.

Specifications

More Information

UPC	766907829815
Light Source	DLP Lamp
Display Resolution	XGA (1024x768)
Display Resolution	1024 x 768
Brightness (Lumens)	5,200 ANSI
Screen Size	30 - 300 in. / 0.76 - 7.62 m
Throw Distance	2.3 - 37.3 ft. / 0.86 - 11.36 m
Throw Ratio	1.41 ~ 2.25
Keystone	Vertical (± 30°) / Horizontal (± 30°)

Lens	1.6x Manual optical zoom / manual optical focus
Light Source (watt)	370
Light Source Life, Normal (hours)	2000
Light Source Life, Dynamic Eco-Mode (hours)	2500
Color Depth	30 bits, 1.07B Color (10+10+10)
Aspect Ratio	4:3 (native)
Input Lag	37ms
Frequency Horizontal	15-100KHz
Frequency Vertical	24-120Hz
PC Resolution (max)	Up to 1920x1080
Mac® Resolution (max)	Up to 1920x1080 (may require MAC adapter)
USB 2.0 Type A	1
Ethernet LAN (RJ45)	1
3.5mm 12V Trigger	1
3.5mm Audio Out	1
3.5mm Audio In	2
Control (RS-232)	1
HDMI 1.4 In	3
HDMI MHL	1
VGA In	2
VGA Out	1
Composite RCA Video In	1
S-Video In	1
Mini USB	1
Micro USB	1
RCA Audio In (L/R)	1
Internal Speakers	10W (x2)
Voltage	100~240VAC (Auto Switching), 50-60Hz (universal)
Consumption (max)	570W
Stand-by	<0.5W
Physical Controls	Power, keystone/arrow keys, left/blank, menu/exit, right/panel key lock, mode/enter, auto, source
On Screen Display	Display, Image, Power Management, Basic, Advanced, System, Information
Temperature	32-104° F (0 - 40° C)
Humidity (non-condensing)	0-90%
Eco-Mode	33dB

Kensington Lock Slot	1
Net (lbs)	13.89
Gross (lbs)	23.81
Net (kg)	6.3
Gross (kg)	10.8
Packaging (in.)	22.72 x 21.14 x 10.24
Physical (in.)	19.55 x 12.45 x 5.5
Packaging (mm)	577 x 537 x 260
Physical (mm)	496.5 x 316.2 x 139.8
AV Control	AMX Certified, ATEN Certified, Crestron Certified, Extron Certified, PJ Link Certified
Regulations	Mexico Energy test/Registration, EAC, TUV-S Mark (Argentina), India BIS, FCC, CE, EMC, CB, CCC, RoHS, REACH, SVHC, WEEE, ErP, Mexico NOM, cTUVus, PSB, RCM, CECP
Package Contents	Pro8510L projector, power cable, VGA cable, remote control with batteries, Quick Start Guide, ViewSonic Wizard CD (with User Guide), Cable management cover
Warranty	Three-year limited warranty on parts and labor, 1-year limited warranty on lamp, 1st year free Express Exchange® service. (One year Express Exchange Service requires product registration).
Recycle/Disposal	Please dispose of in accordance with local, state or federal laws.
Classification	Discontinued

UPC: 766907829815



Contact Sales

ViewSonic.com

888.881.8781

email: salesinfo@viewsonic.com