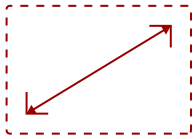


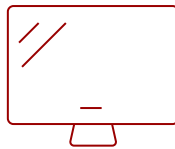
CDP4235

Key Features

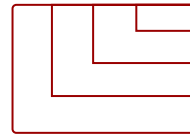
- DISCONTINUED
 - 42" full HD 1920x1080p resolution
 - Thin 19.5mm bezel width
 - Designed for 24/7 applications
-



42
DISPLAY



PANEL



RESOLUTION

Product Description

****This product has been replaced by [CDE4200-L](#).***

ViewSonic's new CDP4235 Full HD Commercial display features a FHD 1920x1080 panel with 4000:1 contrast and Intel's Open Pluggable Specification (OPS) for applications requiring an integrated media player. Additional features include versatile inputs - HDMI, DVI, VGA, S video and composite, YPbPr and built in 10W x 2 speakers. The CDP4235 will support up to a 5x5 display video wall with internal clock and scheduler. RS232 daisy chain and RJ45 are provided for remote control.

Specifications

	More Information
UPC	766907631111
Internal Speakers	10W (x2)
HDMI In	1
VGA	1
Consumption (typical)	210W
Humidity (non-condensing)	10-80%
Physical (in.)	39.04" x 24.4" x 12.98"
Physical Without Stand (in.)	39.04" x 22.9" x 4.52"
Physical (mm)	991.6mm x 621mm x 329.8mm
Physical Without Stand (mm)	991.6mm x 584mm x 115.5mm
VESA Compatible	400 x 400 mm

Package Contents	LCD display, power cable, remote control with batteries, User Guide CD
Regulations	FCC, ICES003, UL, cUL, CE, CB, C-Tick, BSM
Classification	Discontinued
Screen Size	42
Light Source	LCD
Display Resolution	1920 x 1080
Aspect Ratio	16:9
Static Contrast Ratio	4,000:1
Backlight Life (Hours)	50,000
Brightness	450 cd/m2
Response Time (Typical GTG)	11ms
Viewing Angles	178° horizontal, 178° vertical
Panel Surface	Anti-glare, Hard coating 3H

UPC: 766907631111



Contact Sales

ViewSonic.com

888.881.8781

email: salesinfo@viewsonic.com