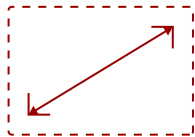


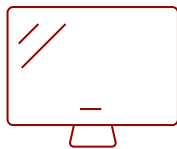
CDP4237-L

Key Features

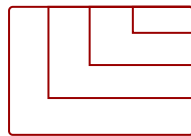
- [DISCONTINUED]
- 42" LED Full HD 1920x1080p resolution - 1300:1 contrast / 50,000:1 DCR
- 120Hz (MEMC) double frame rate processing
- Energy saving LED technology



42"
DISPLAY



PANEL



RESOLUTION



Product Description

The ViewSonic® CDP4237-L commercial display features Full HD 1920x1080p IPS panel technology, fast 120Hz response, and 50,000:1 dynamic contrast ratio. Slim ID design, combined with 27.6mm bezel width makes the CDP4237-L an ideal large screen solution for your digital signage application. Additional features include versatile inputs - HDMI, DVI, VGA, YPbPr and built-in media player utilizing USB storage. Other key features include up to 5x5 tiling for video walls and VGA and DVI loop through support.

Specifications

More Information

| | |
|-------------------|--------------|
| UPC | 766907628012 |
| Internal Speakers | 10W (x2) |
| HDMI In | 1 |

| | |
|------------------------------------|--|
| VGA | 1 |
| Consumption (typical) | 115W |
| Humidity (non-condensing) | 10-80% |
| Gross (lbs) | 34.8 |
| Gross (kg) | 15.8 |
| VESA Compatible | 400 x 400 mm |
| Recycle/Disposal | Please dispose of in accordance with local, state or federal laws. |
| Package Contents | CDP4237-L display, power cable, remote control with batteries, User Guide CD |
| Regulations | FCC, ICES003, UL, cUL, CE, CB, PSB/C-Tick, GOST-R |
| Classification | Discontinued |
| Screen Size | 42" |
| Light Source | LED |
| Display Resolution | 1920 x 1080 |
| Aspect Ratio | 16:9 |
| Static Contrast Ratio | 1,300:1 |
| Dynamic Contrast Ratio | 50,000:1 |
| Backlight Life (Hours) | 50,000 |
| Brightness | 450 cd/m2 |
| Response Time (Typical GTG) | 12ms |
| Viewing Angles | 178° horizontal, 178° vertical |
| Panel Surface | Anti-glare, Hard coating 3H |

UPC: 766907628012



Contact Sales

ViewSonic.com

888.881.8781

email:

salesinfo@viewsonic.com