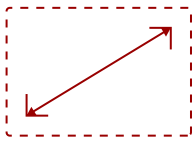


CDP4237-L

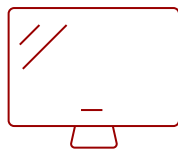
## Key Features

---

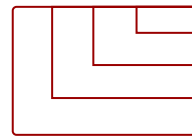
- [DISCONTINUED]
  - 42" LED Full HD 1920x1080p resolution - 1300:1 contrast / 50,000:1 DCR
  - 120Hz (MEMC) double frame rate processing
  - Energy saving LED technology
- 



42  
DISPLAY



PANEL



RESOLUTION

## Product Description

---

The ViewSonic® CDP4237-L commercial display features Full HD 1920x1080p IPS panel technology, fast 120Hz response, and 50,000:1 dynamic contrast ratio. Slim ID design, combined with 27.6mm bezel width makes the CDP4237-L an ideal large screen solution for your digital signage application. Additional features include versatile inputs - HDMI, DVI, VGA, YPbPr and built-in media player utilizing USB storage. Other key features include up to 5x5 tiling for video walls and VGA and DVI loop through support.

## Specifications

---

More Information	
<b>UPC</b>	766907628012
<b>Internal Speakers</b>	10W (x2)
<b>HDMI In</b>	1
<b>VGA</b>	1
<b>Consumption (typical)</b>	115W
<b>Humidity (non-condensing)</b>	10-80%
<b>Gross (lbs)</b>	34.8
<b>Gross (kg)</b>	15.8
<b>VESA Compatible</b>	400 x 400 mm
<b>Recycle/Disposal</b>	Please dispose of in accordance with local, state or federal laws.
<b>Package Contents</b>	CDP4237-L display, power cable, remote control with batteries, User Guide CD

<b>Regulations</b>	FCC, ICES003, UL, cUL, CE, CB, PSB/C-Tick, GOST-R
<b>Classification</b>	Discontinued
<b>Screen Size</b>	42
<b>Light Source</b>	LED
<b>Display Resolution</b>	1920 x 1080
<b>Aspect Ratio</b>	16:9
<b>Static Contrast Ratio</b>	1,300:1
<b>Dynamic Contrast Ratio</b>	50,000:1
<b>Backlight Life (Hours)</b>	50,000
<b>Brightness</b>	450 cd/m2
<b>Response Time (Typical GTG)</b>	12ms
<b>Viewing Angles</b>	178° horizontal, 178° vertical
<b>Panel Surface</b>	Anti-glare, Hard coating 3H

UPC: 766907628012



### Contact Sales

[ViewSonic.com](http://ViewSonic.com)

888.881.8781

email: [salesinfo@viewsonic.com](mailto:salesinfo@viewsonic.com)