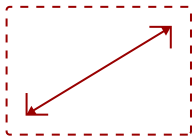


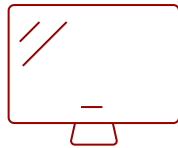
CDE4302

Key Features

- Integrated USB multimedia player
 - Free-bundled vController™ software
 - Hospitality mode for automated multi-screen control
 - Control multiple devices with HDMI® CEC and IR pass-through
 - Enhanced viewing comfort
-



43
DISPLAY



PANEL



RESOLUTION



Product Description

The ViewSonic® CDE4302 is a 43'' Full HD commercial display, offering the combination of cost-efficiency and ease of installation for corporate, retail and hospitality environments. Integrated with an embedded media player, the CDE4302 is able to easily playback high definition messaging via USB port. Versatile connectivity options also include 2 HDMI ports, VGA, RS232 and SPDIF. With Full HD resolution, 350-nit brightness, and wide viewing angles, the slim-bezel CDE4302 delivers sharp and vivid images to ensure crisp pictures and smooth content playback. HDMI CEC pass-through support provides one-touch-play, with additional features for multiple connected devices such as HD set-top-boxes, media players, and Blu-ray™ players. An RS232 port with IR pass-through provides automated control for hospitality installation. Creating a more comfortable viewing experience, the display is equipped with Flicker-Free and Blue Light Filter technologies. In addition, free-bundled vController software offers easy maintenance and intuitive interfaces for remote management via a PC server or laptop.

Specifications

More Information

UPC	766907807615
Media Player Type	Yes
Internal Speakers	10W (x2)
HDMI In	2
VGA	1
3.5mm Audio In	1
3.5mm Audio Out	1
SPDIF Audio Out	1

USB 2.0	1
RS232	1
Consumption (max)	125W
Consumption (typical)	105W
Physical Controls	Power, Mute, Input, Vol +, Vol -, Up, Down, Menu
On Screen Display	Picture, Sound, Special, Advanced Options
Temperature	32-104° F (0 - 40° C)
Humidity (non-condensing)	20-80%
Net (lbs)	19.2
Gross (lbs)	26.9
Net (kg)	8.7
Gross (kg)	12.2
Packaging (in.)	42.1 x 27.4 x 6.3
Physical (in.)	38.1 x 22.0 x 2.4
Packaging (mm)	1070 x 696 x 159
Physical (mm)	968.2 x 559.4 x 60
VESA Compatible	400 x 400 / 200 x 200 mm
Screw Size	M6
Screw Length (mm)	10
Warranty	Three-year limited warranty on parts and labor
Recycle/Disposal	Please dispose of in accordance with local, state or federal laws.
Regulations	CE, CB, ErP, WEEE, C-tick, cTUVus, FCC, ENERGY STAR, Mexico Energy
Classification	Discontinued
Screen Size	43
Viewable Area (in.)	43
Orientation	Landscape
Light Source	LED
Display Resolution	1920 x 1080
Aspect Ratio	16:9
Static Contrast Ratio	3,000:1
Backlight Life (Hours)	30,000
Brightness	350 cd/m2
Response Time (Typical GTG)	8ms
Bezel Width (in.)	Top 0.47 in / Left 0.47 in / Bottom 0.59 in / Right 0.47 in
Bezel Width (mm)	Top 11.9 mm / Left 11.9 mm / Bottom 14.9 mm / Right 11.9 mm
Viewing Angles	178° horizontal, 178° vertical

Panel Surface

Anti-glare, Hard coating 3H

Operation Rating


16/7

UPC: 766907807615



Contact Sales

ViewSonic.com

888.881.8781 

email: salesinfo@viewsonic.com 