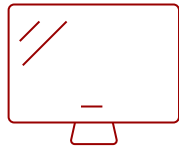


PG707X - 4000 LUMENS XGA NETWORKABLE PROJECTOR WITH 1.3X OPTICAL ZOOM AND LOW INPUT LAG

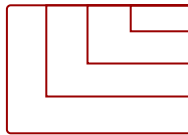
Key Features



30 - 300 in. / 0.76 - 7.62 m
DISPLAY



PANEL



1920 x 1080
RESOLUTION

Flexible connectivity for your favorite devices.



Product Description

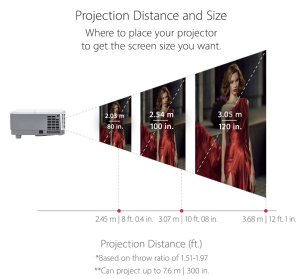
The ViewSonic® PG707X projector features 4,000 lumens, XGA 1024x768 native resolution, an intuitive, user-friendly design, and a sleek white chassis. Exclusive SuperColor™ technology offers a wide color gamut for beautiful image production in nearly any environment. An energy-saving SuperEco™ feature reduces power consumption and extends the lamp life by up to 20,000 hours. A 10W speaker delivers incredibly clear and audible sound, while a top lamp door enables easy access for lamp maintenance. The PG707X is the ideal high brightness projector for use in both classroom and corporate settings.

Specifications

UPC	766907007671
Light Source	DLP Lamp
Display Resolution	XGA (1024x768)
Display Resolution	1024 x 768
Brightness (Lumens)	4,000 ANSI
Screen Size	30 - 300 in. / 0.76 - 7.62 m
Throw Distance	3.0 - 39.4 ft / .9 - 12.0 m
Throw Ratio	1.51-1.97
Keystone	Vertical (+/- 40°) / Horizontal (+/- 40°)
Lens	1.3x optical zoom
Light Source (watt)	203
Light Source Life, Normal (hours)	6000
Light Source Life, Dynamic Eco-Mode (hours)	20000
Color Depth	1.07 Billion Colors
Dynamic Contrast Ratio	22,000:1
Aspect Ratio	4:3
Input Lag	37ms
Frequency Horizontal	15K~105KHz
PC Resolution (max)	1920 x 1080
PC Resolution (min)	640 x 480
Mac® Resolution (max)	1920 x 1080
Mac® Resolution (min)	640 x 480
USB 2.0 Type A	1
Ethernet LAN (RJ45)	1
3.5mm Audio Out	1
3.5mm Audio In	1
Control (RS232)	1
HDMI 1.4 (with HDCP 1.4)	2
VGA In	1
VGA Out	1
Composite RCA Video In	1
Internal Speakers	10W (x1)
Voltage	100-240V +/- 10%, 50/60Hz AC
Consumption (typical)	280W
Stand-by	<0.5W
Physical Controls	Keypad, Power key

On Screen Display	Display, Image, Power Management, Basic, Advanced, System, Information (See user guide for full OSD functionality)
Temperature	32-104° F (0 - 40° C)
Kensington Lock Slot	1
Net (lbs)	5.3
Gross (lbs)	7.5
Net (kg)	2.4
Gross (kg)	3.6
Packaging (in.)	16.3 x 6.6 x 11.7
Physical (in.)	11.6 x 8.6 x 4.3
Packaging (mm)	415.0 x 168.0 x 297.0
Physical (mm)	294.0 x 218.0 x 110.0
Regulations	cTUVus
Package Contents	PG707X projector, power cable, VGA cable, remote control, Quick Start Guide,
Warranty	*Refurbished. 30-day DOA policy for full refund, with a 90-day repair warranty on parts and labor.
Recycle/Disposal	Please dispose of in accordance with local, state or federal laws.

UPC: 766907007671



Contact Sales
ViewSonic.com
 888.881.8781
 email: salesinfo@viewsonic.com