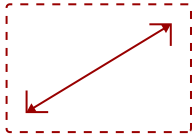


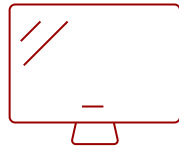
VIEWSONIC 22" 1080P 10-POINT TOUCH MONITOR WITH 24/7 OPERATION, VGA, HDMI, DISPLAYPORT | TD2201-XF

Key Features

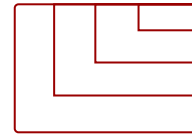
- **VERSATILE TOUCH MONITOR:** 22 inch Full HD (1920x1080p) IPS open-frame display built for commercial integration with thin bezels and a 60Hz refresh rate.
- **PCAP TOUCH TECHNOLOGY:** Projected Capacitive (PCAP) technology delivers a smooth, accurate touch experience with every tap, pinch and swipe.
- **EXTENDED 24/7 FUNCTIONALITY:** Rated for 24/7 continuous operation with an advanced cooling system and burn-in prevention for graphics-rich content.
- **ADVANCED DURABILITY:** 3mm-thick glass with 7H hardness resists scratches and hard knocks while IP65-rated sealing keeps out dust, splashes and moisture.
- **OPEN FRAME DESIGN:** 75x75mm and 100x100mm mounting options enable secure installation in portrait or landscape orientations.
- **FLEXIBLE CONNECTIVITY:** VGA, HDMI and DisplayPort inputs support a wide range of commercial deployments and source devices.



22"
DISPLAY



PANEL



1920 x 1080
RESOLUTION



Product Description

The ViewSonic TD2201-XF is a 22-inch open-frame touch monitor purpose-built for commercial integration in kiosks, ATMs, vending machines and food service environments. IP65-rated sealing protects against dust, splashes and moisture, backed by 24/7 continuous operation so deployments stay up and running around the clock. PCAP touch technology with 10-point touch delivers accurate, responsive performance across food service and industrial installations. With VGA, HDMI and DisplayPort inputs and flexible 75x75mm and 100x100mm VESA mounting, the TD2201-XF is designed to integrate cleanly into virtually any commercial setup.

Specifications

More Information	
UPC	766907029963
Screen Size	22"
Viewable Area (in.)	21.5
Display Resolution	1920 x 1080
Display Resolution	Full HD (1920x1080)
Static Contrast Ratio	1,000:1

Light Source	LED
Brightness	210 cd/m ²
Aspect Ratio	16:9
Response Time (Typical GTG)	22ms
Viewing Angles	178° horizontal, 178° vertical
Backlight Life (Hours)	50,000
Panel Surface	7H Scratch Resistant Surface Hardness
PC Resolution (max)	1920 x 1080
Mac® Resolution (max)	1920 x 1080
USB Type B	1
3.5mm Audio In	1
HDMI In	1
VGA	1
DisplayPort	1
Touch Technology	Projective Capacitive
Touch Points	PCT10 points touch supported
Consumption (typical)	20.34W
Consumption (max)	22.34W
Voltage	AC-DC power (Input: 100V~240V / Output: DC 12V, 4.0 A)
Stand-by	1.69W
Power Supply	External
Cable Organization	No
Physical Controls	Auto, Menu, Left, Right, Exit, Power
On Screen Display	Contrast/Brightness, Input Select, Audio Adjust, Color Adjust, Information, Manual Image Adjust, Setup Menu, Reset
Temperature	32-122° F (0-50° C)
Humidity (non-condensing)	5-90%
VESA Compatible	75 x 75 / 100 x 100 mm
Net (lbs)	10.8 lbs
Net Without Stand (lbs)	10.8 lbs
Gross (lbs)	13.7 lbs
Net (kg)	4.9 kg
Net Without Stand (kg)	4.9 kg
Gross (kg)	6.2 kg
Packaging (in.)	23.03 x 17.32 x 5.12 in.
Physical (in.)	20.16 x 11.94 x 1.88 in

Physical Without Stand (in.)	20.16 x 11.94 x 1.88 in
Packaging (mm)	585 x 440 x 130 mm
Physical (mm)	511.9 x 303.4 x 47.8 mm
Physical Without Stand (mm)	511.9 x 303.4 x 47.8 mm
Package Contents	HDMI Cable x 1 USB A/B cable x 1 AC/DC adapter x 1 3-pin power cord x 1 Quick Start Guide x 1
Recycle/Disposal	Please dispose of in accordance with local, state or federal laws.
Warranty	Three-year limited warranty on parts, labor and backlight

UPC: 766907029963



Contact Sales

ViewSonic.com

888.881.8781

email: salesinfo@viewsonic.com