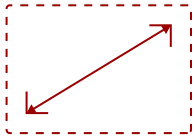


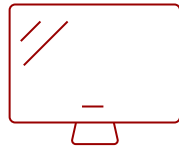
# IFP8635 - 86" 4K 16:9 ANDROID EDLA VIEWBOARD INTERACTIVE DISPLAY WITH INTEGRATED USB-C

## Key Features

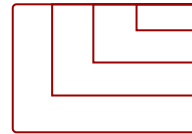
- Smooth Multitasking Without Lag or Delays
- Responsive Writing Experience
- Robust Security and Centralized Management
- Engaging Lessons with ViewSonic® Education Software
- Native Access to the Google Education Ecosystem
- Eco-Friendly & Energy Efficient



86  
DISPLAY



PANEL



RESOLUTION



## Product Description

The ViewSonic® ViewBoard® IFP8635 interactive display makes collaboration simple, secure, and affordable. This 86" touchscreen is designed to deliver a premium, easy-to-use experience without stretching your budget. Powered by Android 16 with Android™ EDLA certification, it gives you quick access to Google Workspace, Microsoft 365, and the apps teams and classrooms already rely on. Writing on the screen feels smooth and precise, helping ideas move faster without lag or distraction. One-cable USB-C keeps setups clean and makes it easy to connect, present, and collaborate from a single device. Built-in ambient and motion sensors help reduce energy use when the display isn't in use, supporting long-term efficiency with no extra effort. The result is a future-ready interactive display that performs reliably, feels familiar, and fits comfortably within today's budgets.

## Specifications

### More Information

|                          |                                |
|--------------------------|--------------------------------|
| <b>UPC</b>               | 766907038873                   |
| <b>OS</b>                | ViewBoard OS EDLA              |
| <b>CPU</b>               | Rockchip RK3576                |
| <b>Memory</b>            | 8GB LPDDR                      |
| <b>Storage</b>           | 128GB eMMC                     |
| <b>Internal Speakers</b> | Soundbar design: 40W (20W x 2) |
| <b>HDMI 2.1 In</b>       | 3                              |

|                                    |  |
|------------------------------------|--|
| <b>HDMI Out</b>                    | 1  |
| <b>VGA</b>                         | 1  |
| <b>DisplayPort</b>                 | 1  |
| <b>SPDIF</b>                       | 1  |
| <b>USB Type A</b>                  | 5  |
| <b>USB Type B</b>                  | 3  |
| <b>USB Type C</b>                  | 2  |
| <b>RS232</b>                       | 1  |
| <b>Ethernet LAN (RJ45)</b>         | 2  |
| <b>Intel® OPS Slot In (80-pin)</b> | 1  |
| <b>Line In</b>                     | 1  |
| <b>Voltage</b>                     | 100-240 VAC  |
| <b>Stand-by</b>                    | <0.5W  |
| <b>Temperature</b>                 | 32-104° F (0 - 40° C)  |
| <b>Non-Operating Temperature</b>   | -4°F to 140°F (-20C to 60C)  |
| <b>Humidity (non-condensing)</b>   | 20-80%   |
| <b>Touch Technology</b>            | IR Recognition   |
| <b>Touch Points</b>                | 64 points  |
| <b>Tip Detection</b>               | Dual tips: 3mm and 10mm, Finger: 12-15mm, Palm: 30mm   |
| <b>Other</b>                       | Palm Rejection   |
| <b>Latency</b>                     | ≤5ms   |
| <b>Net (lbs)</b>                   | 85.76  |
| <b>Gross (lbs)</b>                 | 101.2  |
| <b>Net (kg)</b>                    | 38.9   |
| <b>Gross (kg)</b>                  | 45.9   |
| <b>Packaging (in.)</b>             | 72.95 x 44.88 x 6.93   |
| <b>Physical (in.)</b>              | 67.28 x 40.15 x 3.87   |
| <b>Packaging (mm)</b>              | 1853.0 x 1144.0 x 176.0  |
| <b>Physical (mm)</b>               | 1709.0 x 1020.0 x 98.2   |
| <b>VESA Compatible</b>             | 800 x 400 mm   |
| <b>Warranty</b>                    | 3-year limited warranty on parts, labor and backlight, onsite warranty   |
| <b>Recycle/Disposal</b>            | Please dispose of in accordance with local, state or federal laws.   |
| <b>Package Contents</b>            | IFP7535, Power Cord (3m), USB-C Cable (1.8m) Remote control with AAA battery, USB Touch Cable (3m), Stylus x 2 (a set), Quick Start Guide + Compliance statement, RS232 adapter, Clamp x 5, Camera Plate, Screw x 4, HDMI cable 3m, VB-WIFI-004 WiFi Adapter |
| <b>Regulations</b>                 | CTUVus, FCC, Energy 8.0, EPEAT, CEC  |
| <b>Ethernet LAN</b>                | 2 (10/100/1000 Mbps BaseT for Android and OPS)   |

|                                    |  |
|------------------------------------|--|
| <b>Wifi</b>                        | VB-WIFI-004 adapter, 802.11AX + Bluetooth 5.0    |
| <b>Screen Size</b>                 | 86   |
| <b>Light Source</b>                | DLED   |
| <b>Display Resolution</b>          | 3840 x 2160                                      |
| <b>Refresh Rate</b>                | 60Hz   |
| <b>Aspect Ratio</b>                | 16:9   |
| <b>Static Contrast Ratio</b>       | 5,000:1  |
| <b>Dynamic Contrast Ratio</b>      | 5,000:1  |
| <b>Backlight Life (Hours)</b>      | 50,000   |
| <b>Brightness</b>                  | 350 cd/m2  |
| <b>Response Time (Typical GTG)</b> | 8ms  |
| <b>Viewing Angles</b>              | 178° horizontal, 178° vertical                   |
| <b>Panel Surface</b>               | Anti-glare, 9H Pencil hardness / 3.2mm thickness |

UPC: 766907038873



**Contact Sales**

[ViewSonic.com](http://ViewSonic.com)

888.881.8781

email: [salesinfo@viewsonic.com](mailto:salesinfo@viewsonic.com)