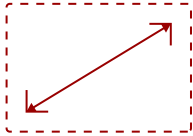
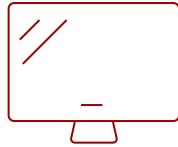


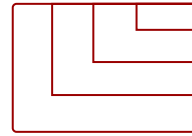
Key Features



24
DISPLAY



IPS
PANEL



1920 x 1080
RESOLUTION



Product Description

Featuring enhanced wide-angle viewing, stunning resolution and flexible connectivity options, the ViewSonic® VA2409m monitor is a great addition to any workspace. This 24" (23.6" viewable) VA2409m monitor comes with SuperClear® IPS panel technology so you can experience stunning brightness and contrast at nearly any viewing angle. With a minimalist edge-to-edge screen and a 3-sided frameless bezel, you can easily create a seamless multi-monitor setup. Connect laptops, PCs, gaming consoles and other multimedia devices using the HDMI port. And with powerful features like flicker-free technology and a blue light filter, you can work for longer with less strain. Enjoy a 3 year limited warranty, industry-leading pixel performance policy and so much more with the ViewSonic VA2409m monitor.

Specifications

More Information

UPC	766907031881
Screen Size	24
Viewable Area (in.)	23.6
Panel Type	IPS
Display Resolution	1920 x 1080
Display Resolution	Full HD (1920x1080)
Static Contrast Ratio	1,000:1
Dynamic Contrast Ratio	50,000,000:1
Light Source	LED
Brightness	250 cd/m2
Colors	16.7M
Color Space Support	8 bit (6 bit + FRC)
Aspect Ratio	16:9

Response Time (Typical GTG)	3ms
Viewing Angles	178° horizontal, 178° vertical
Backlight Life (Hours)	30,000
Panel Surface	Anti-Glare type, Hard-coating (3H), Haze 25%
PC Resolution (max)	1920 x 1080
Mac® Resolution (max)	1920 x 1080
3.5mm Audio Out	1
VGA	1
HDMI 1.4 In	1
Internal Speakers	2W (x2)
Eco Mode (Conserve)	17
Eco Mode (optimized)	19
Consumption (typical)	21
Consumption (max)	24
Voltage	AC 100-240V (universal), 50-60Hz
Stand-by	0.3
Power Supply	External
Cable Organization	No
Kensington Lock Slot	1
Physical Controls	Key 1 (favorite), Key 2, Key 3, Key 4, Key 5 (power)
On Screen Display	Input Select, Audio Adjust, ViewMode, Color Adjust, Manual Image Adjust, Setup Menu
Temperature	32-104° F (0 - 40° C)
Humidity (non-condensing)	20-90%
VESA Compatible	100 x 100 mm
Frequency Horizontal	VGA (24 ~ 86 KHz) HDMI 1.4 (24 ~ 86 KHz)
Frequency Vertical	VGA (48 ~ 75 Hz) HDMI 1.4 (48 ~ 75 Hz)
Tilt (Forward/Back)	3° / 20°
Regulations	cTUVus, FCC-B, ICES003, CEC, NOM, Mexico Energy
Net (lbs)	6.4
Net Without Stand (lbs)	5.6
Gross (lbs)	9.2
Net (kg)	2.9
Net Without Stand (kg)	2.5
Gross (kg)	4.2
Packaging (in.)	23.7" (W) x 16.1" (H) x 4.7" (D)
Physical (in.)	21" (W) x 16.5" (H) x 7.4" (D)

Physical Without Stand (in.)	21" (W) x 12.6" (H) x 2" (D)
Packaging (mm)	602 mm (W) x 408 mm (H) x 120 mm (D)
Physical (mm)	534 mm (W) x 419 mm (H) x 189 mm (D)
Physical Without Stand (mm)	534 mm (W) x 321 mm (H) x 51 mm (D)
Package Contents	LCD Display, Power Cable, HDMI Cable, Quick Start Guide
Recycle/Disposal	Please dispose of in accordance with local, state or federal laws.
Warranty	*Refurbished. 30-day DOA policy for full refund, with a 90-day repair warranty on parts and labor.

UPC: 766907031881



Contact Sales

ViewSonic.com

888.881.8781

email: salesinfo@viewsonic.com